

MEETING AGENDA

The City Council/Successor Agency of the City of Firebaugh
Vol. No.17/06-05

Location of Meeting: Andrew Firebaugh Community Center
1655 13th Street, Firebaugh, CA 93622
Date/Time: June 5, 2017/6:00 p.m.

CALL TO ORDER

ROLL CALL
Mayor Brady Jenkins
Mayor Pro Tem Felipe Perez
Council Member Marcia Sablan
Council Member Elsa Lopez
Council Member Freddy Valdez

In compliance with the Americans with Disabilities Act, if you need special assistance to access the Andrew Firebaugh Community Center to participate at this meeting, please contact the Deputy City Clerk at (559) 659-2043. Notification 48 hours prior to the meeting will enable the City to make reasonable arrangements to ensure accessibility to the Andrew Firebaugh Community Center.

Any writing or documents provided to a majority of the City Council regarding any item on this agenda will be made available for public inspection at City Hall, in the Deputy City Clerk's office, during normal business hours.

PLEDGE OF ALLEGIANCE

PRESENTATION

- Sheriff Mims presentation on Proposition 64, the California Marijuana Legalization Initiative.

PUBLIC COMMENT

CONSENT CALENDAR

Items listed on the calendar are considered routine and are acted upon by one motion unless any Council member requests separate action. Typical items include minutes, claims, adoption of ordinances previously introduced and discussed, execution of agreements and other similar items.

1. **APPROVAL OF MINUTES – The City Council regular meeting on May 15, 2017.**

NEW BUSINESS

2. **RESOLUTION NO. 17-21 - A RESOLUTION OF THE CITY COUNCIL OF THE CITY OF FIREBAUGH APPROVING AGREEMENT BETWEEN THE CITY OF FIREBAUGH AND MADERA COUNTY FOR AUTOMATIC/MUTUAL AID.**

Recommended Action: Council receives public comment & approves Res. No. 17-21.

3. **RESOLUTION NO. 17-22 - A RESOLUTION OF INTENTION OF THE CITY COUNCIL OF THE CITY OF FIREBAUGH TO ORDER ASSESSMENTS DISTRICT NO. 1 (Pursuant to the Landscaping and Lighting Act of 1972).**

Recommended Action: City Council receives public comment & approves Res. No. 17-22.

4. THE CITY COUNCIL OF THE CITY OF FIREBAUGH TO DISCUSS AND APPROVE THE CONSULTING AGREEMENT BETWEEN THE CITY OF FIREBAUGH AND BUXTON COMPANY.

Recommended Action:

Council receives public comment & takes action.

ADMINISTRATIVE REPORTS

5. Administrative Report – FY 2017/18 Grants Fund Budget – Preliminary Presentation.

Finance Director Pio Martin: Preliminary Grant Fund Budget enclosed.

SUCCESSOR AGENCY

STAFF REPORTS

PUBLIC COMMENT ON CLOSED SESSION ITEM ONLY

CLOSED SESSION

ANNOUNCEMENT AFTER CLOSED SESSION

ADJOURNMENT

Certification of posting the Agenda

I declare under penalty of perjury that I am employed by the City of Firebaugh and that I posted this agenda on the bulletin boards at City Hall, June 1, 2017 at 5:00 p.m. by Rita Lozano Deputy City Clerk.

MEETING MINUTES

The City Council/Successor Agency of the City of Firebaugh Vol. No. 17/05-51

Location of Meeting: Andrew Firebaugh Community Center
1655 13th Street, Firebaugh, CA 93622

Date/Time: May 15, 2017/6:00 p.m.

CALL TO ORDER Meeting called to order by Mayor Jenkins at 6:00 p.m.

ROLL CALL

PRESENT: Mayor Brady Jenkins
Mayor Pro Tem Felipe Perez 6:07 pm
Council Member Elsa Lopez
Council Member Freddy Valdez
Council Member Marcia Sablan

ABSENT:

OTHERS: City Attorney Meggin Boranian; Acting City Manager/Public Works Director, Ben Gallegos; Finance Director, Pio Martin; Deputy City Clerk, Rita Lozano; Police Chief, Sal Raygoza; Fire Chief, John Borboa; City Engineer, Mario Gouveia; Wanda Breshears & others.

PLEDGE OF ALLEGIANCE Council Member Lopez led pledge of Allegiance.

PRESENTATION

Rob Terry, Section Director of American Planning Association, Central California Chapter, presented the City of Firebaugh and City Planner Karl Schoettler, with the "Outstanding Planning Award for Best Practices" for the Firebaugh Zoning Ordinance.

PUBLIC COMMENT

Mrs. Alma Martinez was invited by Council Member Perez to inform Council and the community of a regional transportation plan meeting to be held in Firebaugh. The workshop will be held in both English and Spanish is proposed between the hours of 6 pm – 8 pm on the last week of June. It languages, the workshop will be to discuss the needs of the whole Fresno County. Hoping to use the Firebaugh Community Center and include flyer in the city water bills.

CONSENT CALENDAR

1. APPROVAL OF MINUTES – The City Council regular meeting on May 5, 2017.
2. WARRANT REGISTER – Period starting April 1, and ending on April 30, 2017.

April 2017	General Warrants	#34929 - #35039	\$ 255,483.33
	Payroll Warrants	#68106 - #68205	\$ 173,422.44
TOTAL			\$ 428,905.77

Motion to pull Check # 34942 and approve Consent Calendar by Council Member Sablan, second by Council Member Valdez; motion pass by 5-0 vote.

Motion to approve Check # 34942 by Council Member Sablan, second by Council Member Perez; motion pass by 4-0 vote. Lopez - Abstain

ADMINISTRATIVE REPORTS

3. Administrative Report – FY 2017/18 Streets Fund Budgets – Preliminary Presentation.

Finance Director Pio Martin presented the preliminary Street Fund Budgets.

Motion to enter Successor Agency at 6:48 pm, by Council Member Valdez, second by Council Member Sablan, motion pass by 5-0 vote.

SUCCESSOR AGENCY

4. RESOLUTION NO. 17-20 - A RESOLUTION OF THE SUCCESSOR AGENCY TO CITY OF FIREBAUGH REDEVELOPMENT AGENCY RECOMMENDING A PURCHASE OFFER TO THE OVERSIGHT BOARD FOR 1185 N STREET.

Motion to accept offer of \$40,000 by Res. No. 17-20 by Council Member Lopez, second by Council Member Valdez; motion pass by 5-0 vote.

Motion to enter Council Meeting at 6:53 pm, by Council Member Valdez, second by Council Member Sablan, motion pass by 5-0 vote.

STAFF REPORTS

- Police Chief, Sal Raygoza – Attended a meeting in Sacramento with Ben to discuss possibility of approval on courthouse, and attended a meeting with Ben and Meggin at Fresno County with their representatives to discuss the matter. It looks like a strong possibility, County representatives agreed to submit a letter to the State requesting the property transfer approval. Community has been quite. Council Member Valdez, thanked PD and Staff for service, it's National Peace Officer Week. Girls from Mendota would like to join the Firebaugh PAL League, because they don't have enough players to create different teams, so they would like to play in our Pal League. PAL will be taking forty-five girls from the Firebaugh League to the Monterey Aquarium. Google will pay for transportation, meal and entrance fee.
- City Engineer, Mario Gouveia – Provided update on CDBG Projects. Council Member Sablan, stated there has been a lot of complaints regarding Enrico Street. Ben replied, the contractors could not proceed due to weather and issues with the last contractor, so a new contractor will complete the work. City will retain some funding from the previous contractor for the incomplete project.
- Finance Director, Pio Martin – Next budget presentation will be the Grants Budget, so provide any requested changes to the budget before the final approval. Mayor Jenkins asked if there is a budget for a new Fire Chief, staff replied, "No", it was never requested or discussed to be budgeted for. Council Member Sablan asked Attorney to explain the difference between a stipend and a salary employee. Stipend employee is not taxed (lump sum), Salary is hourly and is taxed by the city. The Attorney continued with the difference between independent contractor and city employee.
- Public Works Director, Ben Gallegos – Reported there was a plane accident at the airport, it was a family of five, everyone is safe and able to walk away, it could've been worse. Attended a meeting in Mendota regarding a joint wastewater treatment plant with Mendota, Firebaugh & Dos Palos with no out of pocket expenses to construct. Held a meeting with a developer, along with City Engineer and City Planner, the plans to build is about a year to a year and half, but they need to buy property which has been difficult. As Meggin and Sal stated earlier, we attended a meeting in Sacramento and at Fresno County regarding the Courthouse, the meetings went well. Sink hole update, most have been fixed but not all of them, the repairs may go over the approved budget. Restrooms at the Rodeo Grounds is still pending, working with the school on the sewer line installation, because it will cross their property. Staff is also still hoping to have funding to build the restrooms in the future. Will attend a conference in Las Vegas May 21-23 to seek new businesses that may be interested to establish their companies in Firebaugh.

- **Council Member Valdez** – Thanked Ben and Michael Molina for setting up activities for Mr. Pepper's class, they offered to do a clean-up event for the city. Freddy and Ben attended a Parks and Rec Summit, received good info from Ismael Herrera on how to utilize Fresno State Students.

PUBLIC COMMENT ON CLOSED SESSION ITEM ONLY

Motion to enter closed session at 7:17 pm, by Council Member Valdez, second by Council Member Sablan, motion pass by 5-0 vote.

CLOSED SESSION

5. REAL ESTATE NEGOTIATION – Pursuant to Government Code Section #54956.8.

Re: APN's # 008-131-08 & 008-130-09 Designative Rep. City Negotiator: Ben Gallegos

Re: APN's # 007-062-19 & 007-062-23 Designative Rep. City Negotiator: Ben Gallegos

Motion to enter closed session at 7:42 pm, by Council Member Valdez, second by Council Member Sablan, motion pass by 5-0 vote.

ANNOUNCEMENT AFTER CLOSED SESSION: *No Action Taken*

Council Members asked staff to contact the Firebaugh Unified School District and requested a joint meeting for June 19, 2014 at 4:00 pm to discuss the use of facilities, development impact fees, parking issues and anything they would like to add to the agenda.

ADJOURNMENT - *Motion to adjourn by Councilmember Valdez, second by Councilmember Perez; motion passes by 5-0 vote at 7:45 p.m.*

RESOLUTION NO. 17-21

A RESOLUTION OF THE CITY COUNCIL OF THE CITY OF FIREBAUGH APPROVING AGREEMENT BETWEEN THE CITY OF FIREBAUGH AND MADERA COUNTY FOR AUTOMATIC/MUTUAL AID

WHEREAS, the City Council of the City of Firebaugh has previously approved an agreement between the Firebaugh Fire Department and Madera County Fire Department for automatic mutual aid; and

WHEREAS, an amendment to the agreement between the Madera County and City of Firebaugh which would jointly provide fire protection, emergency medical services, to maximize delivery of services by responding units is necessary to protect life or property; and

WHEREAS, beginning January 1, 2016, Madera County agrees to pay City of Firebaugh \$10,200.00 for all Automatic Aid responses per this amended agreement for the 2016 calendar year; and

WHEREAS, the amendment calls for Madera County to pay an annual fee to the City of Firebaugh based on the prior four (4) year average that the Firebaugh Fire Department responds into aid area of Madera County; and

NOW, THEREFORE, BE IT RESOLVED by the City Council of the City of Firebaugh as follows:

1. Approve the amendment to the agreement between the City of Firebaugh and Madera County for automatic mutual aid.
2. Madera County and City of Firebaugh would jointly provide fire protection and emergency medical services.
3. Beginning January 1, 2016, County agrees to pay City Firebaugh \$10,200.00 for all Automatic Aid responses per this agreement for the 2016 calendar year.
4. Madera County to pay an annual fee to the City of Firebaugh based on the prior four (4) year average that the Firebaugh Fire Department responds into aid area of Madera.
5. The amended agreement attached hereto and incorporated herein as Exhibit "A", (Madera County Contract No. 9911C-C-2017) is hereby approved.

The foregoing Resolution was adopted at a regular meeting of the City Council of the City of Firebaugh on the 5th day of June, 2017 by the following call vote:

AYES: Council Member(s)

NOES: Council Member(s)

ABSENT: Council Member(s)

ABSTAIN: Council Member(s)

APPROVED:

ATTEST:

Brady Jenkins, Mayor

Rita Lozano, Deputy City Clerk



BOARD OF SUPERVISORS COUNTY OF MADERA

MADERA COUNTY GOVERNMENT CENTER
200 WEST 4TH STREET / MADERA, CALIFORNIA 93637
(559) 675-7700 / FAX (559) 673-3302 / TDD (559) 675-8970
Agendas available: www.madera-county.com

Members of the Board

Brett Frazier, District 1
David Rogers, District 2
Robert L. Poythress, District 3
Max Rodriguez, District 4
Tom Wheeler, District 5

AGENDA ITEM SUBMITTAL

May 9, 2017

Chairman Max Rodriguez

DEPARTMENT Fire Department		DEPARTMENT CONTACT Heather Evans 559-675-7799		AGENDA ITEM 5.F Consent Calendar									
SUBJECT: Automatic and Mutual Aid with the City of Firebaugh		REQUIRED VOTE: 3/5 Votes Required	DOC. ID NUMBER 2808	DATE REC'D 5/2/2017									
For Clerk of the Board's Office Use Only													
BOARD'S ACTION: MCC. NO. 9911C-C-2017, CITY OF FIREGAUGH													
<table border="1" style="width: 100%;"><tr><td style="width: 20%;">RESULT:</td><td>APPROVED BY CONSENT VOTE [UNANIMOUS]</td></tr><tr><td>MOVER:</td><td>Tom Wheeler, Chair Pro Tem</td></tr><tr><td>SECONDER:</td><td>Brett Frazier, Supervisor</td></tr><tr><td>AYES:</td><td>Frazier, Rogers, Poythress, Rodriguez, Wheeler</td></tr></table>						RESULT:	APPROVED BY CONSENT VOTE [UNANIMOUS]	MOVER:	Tom Wheeler, Chair Pro Tem	SECONDER:	Brett Frazier, Supervisor	AYES:	Frazier, Rogers, Poythress, Rodriguez, Wheeler
RESULT:	APPROVED BY CONSENT VOTE [UNANIMOUS]												
MOVER:	Tom Wheeler, Chair Pro Tem												
SECONDER:	Brett Frazier, Supervisor												
AYES:	Frazier, Rogers, Poythress, Rodriguez, Wheeler												
Is this item Budgeted? Yes Will this item require additional personnel? No Previous Relevant Board Actions: MCC NO. 9911B-C-2015 Other Supporting Documents: Contract			DOCUMENT NO(S). MCC NO. 9911C-C-2017										

RECOMMENDED ACTIONS:

Consideration of entering into an Amendment to MCC NO. 9911B-C-2015 with the City of Firebaugh for the Automatic and Mutual Aid Agreement for calendar year 2016.

DISCUSSION / BACKUP / FISCAL IMPACT:

The Madera County Fire Department has had an Automatic and Mutual Aid Agreement with the City of Firebaugh since 1986. The agreement covers a portion of Madera County where there are both residential and commercial occupancies and currently no Madera County Fire resources nearby to provide timely emergency responses. In fact, the closest Madera County apparatus is up to 25 minutes from the County line, near the City of Firebaugh. With the Madera County Fire Department contracting for Automatic Aid with the City of Firebaugh, Madera County is able to provide service to the residents and business owners who work and reside in the area, as well as those who travel through this area of minimal coverage.

The current agreement allows for the payment of \$200.00 to the City of Firebaugh per Automatic Aid response in Madera County times the average number of Automatic Aid responses over the previous four years. During the last four years, the City of Firebaugh has provided Automatic Aid to the County of Madera an average of 51 times per year (see attached). Utilizing this average of 51 service calls per year at the rate of \$200 per call, Madera County's cost for Automatic Aid will be \$10,200.00 for Calendar Year 2016.



BOARD OF SUPERVISORS COUNTY OF MADERA

MADERA COUNTY GOVERNMENT CENTER
200 WEST 4TH STREET / MADERA, CALIFORNIA 93637
(559) 675-7700 / FAX (559) 673-3302 / TDD (559) 675-8970
Agendas available: www.madera-county.com

Members of the Board

Brett Frazier, District 1
David Rogers, District 2
Robert L. Poythress, District 3
Max Rodriguez, District 4
Tom Wheeler, District 5

This rate will be adjusted each year, based on the average of the previous four calendar years. The City of Firebaugh will invoice this pre-calculated annual flat fee to Madera County Fire Department in May 2017.

ATTACHMENTS

1. Response Log
2. MCC NO. 9911C-C-2017

MADERA COUNTY CONTRACT NO. 9911 C-C-2017
(Amended Agreement with City of Firebaugh – Mutual Aid in Emergencies)

THIS AGREEMENT (this "Amendment") is made and entered into this 9th day of MAY, 2017, by and between the COUNTY OF MADERA, a political subdivision of the State of California ("COUNTY"), and the CITY OF FIREBAUGH, a California municipal corporation (hereinafter "FIREBAUGH").

RECITALS

A. The parties entered into Madera County Contract No. 8805-C-2009 whereby COUNTY and FIREBAUGH would joint provide fire protection, emergency medical services and to maximize the delivery of fire protection and emergency medical services by responding units necessary to protect life or property.

B. Contract No. 8805-C-2009 was most recently amended on November 10, 2015, as Contract No. 9911B-C-2015.

C. The parties again wish to amend the Contract as follows:

AGREEMENT

1. Section 2 "FIREBAUGH'S DUTIES," subsection 2.03, of Madera County Contract No. 8805-C-2009 is hereby amended to read in its entirety as follows:

"2.03 Beginning January 1, 2016, COUNTY agrees to pay FIREBAUGH Ten Thousand Two Hundred Dollars (\$10,200.00) for all Automatic Aid responses per this Agreement provided by FIREBAUGH for the 2016 calendar year. This reimbursement amount is based on a Two Hundred Dollars (\$200.00) call rate multiplied by the average number of responses per year over the previous four years. The amount will be

adjusted again for future calendar years, but each calendar year's adjustment shall be based on the previous four years' response average. This agreement will be reviewed annually during the month of December to insure fairness to both COUNTY and FIREBAUGH."

2. Except as provided in this Amendment, all other terms and conditions of Madera Contract No. 8805-C-2009 shall remain in full force and effect.

//

//

//

//

//

//

//

//

//

//

//

//

//

//

//

//

//

IN WITNESS WHEREOF the foregoing Agreement is executed on the date and year first
above-written.

COUNTY OF MADERA

CITY OF FIREBAUGH




Chairman, Board of Supervisors

Mayor

ATTEST:

ATTEST:




Clerk, Board of Supervisors

City Clerk

Approved as to Legal Form:
COUNTY COUNSEL

Approved as to Legal Form:
CITY ATTORNEY

By:  Digitally signed by: Dale E. Bacigalupi
DN: CN = Dale E. Bacigalupi email =
dbacigalupi@lozano-smith.com C = US O = Lozano
Smith
Date: 2017.03.13 16:05:43 -08'00'

ACCOUNT NUMBER(S)



GOUVEIA ENGINEERING

STAFF REPORT

TO: Firebaugh City Council

FROM: Mario B. Gouveia, PE, City Engineer

DATE: June 06, 2017

RE: Resolution of Intention of the City Council to Order Assessments and Set a Time and Place for a Public Hearing

RECOMMENDATION

That City Council adopts a resolution declaring the City's intention to levy and collect the Annual Assessments for Assessment District No. 1, and to hold a public hearing on July ____, 2017 to hear public testimony regarding the assessments.

BACKGROUND

Each year, the City levies annual assessments within its Landscaping, Lighting and Maintenance District (LLMD). On April 17, 2017, Council initiated proceedings for the annual levy and the City Engineer was directed to prepare the Engineer's Report for the annual assessment.

The yearly assessments established for all properties within the District cover the City's cost for maintenance, related services, and incidental expenses. The assessments for District No. 1 (excluding Tract 5529) are unchanged from last year; this assessment district was created utilizing a fixed assessment of \$35.00 per residential unit (RU). The total calculated amount to be assessed for District No. 1 (excluding Tract 5529) for Fiscal Year 2017-2018 is \$17,296.00 based on \$35.00 multiplied by 494.17 RU (total assessable units).

The assessments for Tract 5529 are subject to an annual adjustment tied to the Consumer Price Index. The maximum allowable assessment increase is equal to the change in CPI and shall not exceed 3.0%. Since the change in CPI was 3.5%, the increase in assessment is limited to 3.0%. In accordance with the foregoing limitations, the assessment for 2016-2017 will be \$160.80 per RU. The total calculated amount for Tract 5529 to be assessed for Fiscal Year 2017-2018 is \$29,912.28 divided by 186 RU.

The total assessments for Fiscal Year 2017-2018 including District No. 1 and Tract 5529 are \$47,208.28.

The Engineer's Report, Resolution of Intention, and public hearing are requirements set forth in Division 15, part 2, of the Streets and Highways Code of the State of California.

Two meetings are required to complete the annual assessment process. As required by the Landscaping and Lighting Act of 1972, the preliminary Engineer's Report for Assessment District No. 1 is on file with the City Clerk and is available for public review. At this regular meeting on June 06, 2017, the City Council will review the draft annual Engineer's Report detailing the assessments, and consider the attached resolution declaring the City's intention to levy and collect the annual assessments. The attached resolution sets a public hearing on the proposed levy for July ____, 2017 at which time any interested person has the right to be heard either orally or in writing before the completion of the hearing. The public hearing will serve as the second required meeting, and staff will seek Council's formal adoption of the annual Engineer's Report at that time.

RESOLUTION NO. 17-22

**A RESOLUTION OF INTENTION OF THE CITY COUNCIL OF THE CITY OF FIREBAUGH TO
ORDER ASSESSMENTS**

DISTRICT NO. 1

(Pursuant to the Landscaping and Lighting Act of 1972)

The City Council of the City of Firebaugh resolves:

1. The City Council intends to levy and collect assessments within District No. 1 during the fiscal year 2017-2018. The area of land to be assessed is located in the City of Firebaugh, Fresno County.
2. In accordance with this Council's resolution directing the filing of an annual report, Mario Gouveia, Engineer of Work, has filed with the City Clerk the report required by the Landscaping and Lighting Act of 1972. All interested persons are referred to that report for a full and detailed description of the improvements, the boundaries of the assessment district and the proposed assessments upon assessable lots and parcels of land within the assessment district.
3. On Monday, the _____ day of July, 2017, at 6:00 P.M., the City Council will conduct a public hearing on the question of the levy of the proposed annual assessment. The hearing will be held at the meeting place of the City Council located at the Community Center in Firebaugh, California.
4. The City Clerk is authorized and directed to give the notice of hearing required by the Landscaping and Lighting Act of 1972.

PASSED AND ADOPTED by the City Council of the City of Firebaugh on June 5, 2016 by the following vote:

AYES: Board Members
NOES: Board Members
ABSENT: Board Members
ABSTAIN: Board Members

APPROVED

ATTEST

Brady Jenkins
Mayor

Rita Lozano
Deputy City Clerk

CLERK'S CERTIFICATE

I, Rita Lozano, Deputy City Clerk of the City of Firebaugh (the "City") certify that the foregoing resolution was duly passed and adopted at a regular meeting of the Firebaugh City Council held on June 5, 2016.

DATE: June 5, 2016

Rita Lozano, Deputy City Clerk

CITY OF FIREBAUGH
FRESNO COUNTY, CALIFORNIA
LANDSCAPING AND LIGHTING MAINTENANCE
DISTRICT NO. 1



ENGINEER'S REPORT
2017-2018


ENGINEER'S REPORT

LANDSCAPING AND LIGHTING MAINTENANCE DISTRICT NO. 1

(Pursuant to the Landscaping and Lighting Act of 1972)

The undersigned respectfully submits the enclosed report as directed by the City Council.

Dated: June 06, 2017

By 
Mario B. Gouveia P.E., Engineer of Work

I HEREBY CERTIFY that the enclosed Engineer's Report, together with Assessment and Assessment and Boundary Diagrams thereto attached was filed with me on the 06th day of June, 2017.

Rita Lozano, City Clerk, City of Firebaugh,
Fresno County, California

By _____
Rita Lozano

I HEREBY CERTIFY that the enclosed Engineer's Report, together with Assessment and Assessment and Boundary Diagrams thereto attached was approved and confirmed by the City Council of the City of Firebaugh, California, on the ____ day of July, 2017.

Rita Lozano, City Clerk, City of Firebaugh,
Fresno County, California

By _____
Rita Lozano

I HEREBY CERTIFY that the enclosed Engineer's Report, together with Assessment and Assessment and Boundary Diagrams thereto attached was filed with the County Auditor of the County of Fresno on the ____ day of _____, 2017.

Rita Lozano, City Clerk, City of Firebaugh,
Fresno County, California

By _____
Rita Lozano

ENGINEER'S REPORT

LANDSCAPING AND LIGHTING MAINTENANCE DISTRICT NO. 1

(Pursuant to the Landscaping and Lighting Act of 1972)

The undersigned, Engineer of Work for the Assessment District, City of Firebaugh, Fresno County, California, makes this report, as directed by the City Council, pursuant to Section 22585 of the Streets and Highways Code (*Landscaping and Lighting Act of 1972*).

The improvements which are the subject of this report are briefly described as follows:

1. Storm Drainage Facilities
2. Landscape Maintenance
3. Lighting
4. Flood Control Levee

This report consists of six parts as follows:

PART A. Plans and Specifications and description of district formation.

PART B. An estimate of the cost of the improvements.

PART C. An assessment of the estimated cost of the improvements on each benefited parcel of land within the assessment district.


PART D. A statement of the method by which the undersigned has determined the amount proposed to be assessed against each parcel.

PART E. A list of the names and addresses of the owners of real property within this assessment district, as shown on the last equalized assessment roll for taxes, or as known to the Clerk. The list is keyed to Exhibit C by assessment number.

PART F. Assessment and boundary diagrams showing all of the parcels of real property within this assessment district and the description of the Landscaping and Lighting Maintenance District No. 1 boundary. The Assessment Diagram is keyed to Part C by assessment number.

Respectfully submitted,




Engineer of Work

PART A

PLANS AND SPECIFICATIONS AND DISTRICT BOUNDARY

LANDSCAPING AND LIGHTING MAINTENANCE DISTRICT NO. 1

(Pursuant to the Landscaping and Lighting Act of 1972)

PLANS AND SPECIFICATIONS

The plans and specifications for the street landscaping and lighting and storm drainage improvements to be maintained are on file at the Public Works Department of the City of Firebaugh and are incorporated herein by reference.

DISTRICT FORMATION

WHEREAS, on October 1, 1990, the City Council of the City of Firebaugh directed inclusion of the storm drainage basin serving Tracts 4010 and 4060 in the landscaping and lighting maintenance district to provide funding to finance the improvement of said storm drainage basin and its maintenance; and

WHEREAS, on December 5, 1991, the Planning Commission of the City of Firebaugh approved the Tentative Subdivision Map of Tract 4608, in the City of Firebaugh, County of Fresno, State of California, subject to the terms of the "Conditions of Approval," which provided for the annexation to the existing landscaping and lighting maintenance district to provide funds to the City for the maintenance of the public lighting within street rights-of-way and landscaping within a landscaping easement included as a part of said district; and

WHEREAS, on February 18, 1991, the City Council of the City of Firebaugh directed the inclusion of Hacienda Villa Apartments, for storm drainage purposes, in the landscaping and lighting maintenance district to provide funding to finance the improvement of said storm drainage basin and its maintenance; and

WHEREAS, on August 31, 1992, the City Council of the City of Firebaugh directed the inclusion of Tract No. 4459, Riverview Estates, for storm drainage purposes, in the landscaping and lighting district to provide funding to finance the improvement of said storm drainage basin and its maintenance; and

WHEREAS, on August 2, 1993, the City Council of the City of Firebaugh directed the inclusion of Tract No. 4608, Riverview Estates #2, for storm drainage purposes, in the landscaping and lighting district to provide funding to finance the improvement of said storm drainage basin and its maintenance; and

WHEREAS, on December 20, 1999, the City Council of the City of Firebaugh directed the inclusion of Tract No. 4850, Circa Del Rio, for storm drainage purposes, in the landscaping and lighting district to provide funding to finance the maintenance of lighting and landscaping and the improvement of said storm drainage basin and its maintenance; and

WHEREAS, on March 19, 2001, the City Council of the City of Firebaugh ordered annexation and the inclusion of Phase I Tract 4851, (Cerca Del Rio II), for the maintenance of the public lighting and other improvements within street rights-of-way and for storm drain purposes, in the landscaping and lighting district to provide funding to finance such improvements and their maintenance; and

WHEREAS, on March 19, 2001, the City Council of the City of Firebaugh ordered annexation and inclusion of Phases II and III of Tract 4851 (Cerca Del Rio II), for the maintenance of the public lighting and other improvements within street rights-of-way and for storm drain purposes, in the landscaping and lighting district to provide funding for such improvements and their maintenance; and

WHEREAS, on March 19, 2001, the City Council of the City of Firebaugh ordered annexation and inclusion of Parcel "A" of Parcel Map 94-1, for maintenance of the public lighting and other improvements within the street rights-of-way and for storm drain purposes, in the landscaping and lighting district to provide funding for such improvements and their maintenance; and

WHEREAS, on May 17, 2004 the City Council of the City of Firebaugh ordered annexation and inclusion of Tract 5202 (Cerca Del Rio III), for maintenance of the public lighting and other improvements within the street rights-of-way and for storm drain purposes, in the landscaping and lighting district to provide funding for such improvements and their maintenance; and

WHEREAS, on July 18, 2005, the City Council of the City of Firebaugh ordered annexation and inclusion of Tract No. 5367, for maintenance of the public lighting and other improvements within the street rights-of-way and for offsite storm drain purposes, in the landscaping and lighting district to provide funding for such improvements and their maintenance; and

WHEREAS, on September 19, 2005, the City Council of the City of Firebaugh ordered annexation and inclusion of Tract 5529, for maintenance of the public lighting and other improvements within the street rights-of-way, for storm drain purposes and for the maintenance of the flood control levee and flood wall in the landscaping and lighting district to provide funding for such improvements and their maintenance; and

WHEREAS, the annual cost to maintain the Flood Control Levee, Flood Control Wall and Drainage Basin appurtenant to Tract 5529 will increase, therefore, the annual assessments for the maintenance of the Flood Control Levee should be increased in an amount consistent with a national consumer index inflation rate.

PART B

ESTIMATE OF COST

**CITY OF FIREBAUGH
LANDSCAPING AND LIGHTING MAINTENANCE DISTRICT NO. 1**

ENGINEER'S COST ESTIMATE

2017-2018

ESTIMATE OF ASSESSMENT DISTRICT IMPROVEMENT COSTS (excluding Tract 5529)

The estimate of Assessment District improvement costs for fiscal year 2017-2018 is as follows:

1.	MAINTENANCE COSTS (Drainage Basins)	\$	2,220.00
2.	MAINTENANCE COST (Landscaping Valle de Paz)		8,300.00
3.	STREET IMPROVEMENTS (Lighting)		
a.	COSTS AND MAINTENANCE		75.00
4.	INCIDENTAL COSTS		
a.	LEGAL FEES		250.00
b.	ENGINEERING FEES		1,250.00
c.	DISTRICT ADMINISTRATIVE COSTS		75.00
d.	COUNTY PROCESSING FEE		580.00
	TOTAL COSTS	\$	12,750.00
	TOTAL COST TO ASSESSMENT	\$	12,750.00

ESTIMATE OF ASSESSMENT DISTRICT IMPROVEMENT COSTS FOR TRACT 5529 (Valle del Sol)

The estimate of Assessment District improvement costs for fiscal year 2017-2018 is as follows:

1.	MAINTENANCE COSTS (Drainage Basins)	\$	4,130.00
2.	MAINTENANCE COST (Flood Control Levee)		7,675.00
3.	STREET IMPROVEMENTS (Lighting)		
a.	COSTS AND MAINTENANCE		225.00
4.	INCIDENTAL COSTS		
a.	LEGAL FEES		250.00
b.	ENGINEERING FEES		1,250.00
c.	DISTRICT ADMINISTRATIVE COSTS		200.00
d.	COUNTY PROCESSING FEE		280.00
5.	RESERVE FUND		45,798.00
	TOTAL COSTS	\$	59,808.00
	TOTAL COST TO ASSESSMENT	\$	59,808.00

PART C

ASSESSMENT ROLL

CITY OF FIREBAUGH
FRESNO COUNTY, CALIFORNIA

LANDSCAPING AND LIGHTING MAINTENANCE DISTRICT NO. 1

<u>ASSESSMENT DIAGRAM NUMBER</u>	<u>CODE</u>	<u>LOT NO.</u>	(Fiscal Year 2017-2018) <u>ASSESSOR'S PARCEL NUMBER</u>	<u>TOTAL ASSESSMENT</u>
(TRACT NO. 4010)				
1	6024	24	00726124	\$35.00
2	6024	23	00726123	\$35.00
3	6024	22	00726122	\$35.00
4	6024	21	00726121	\$35.00
5	6024	20	00726120	\$35.00
6	6024	19	00726119	\$35.00
7	6024	18	00726118	\$35.00
8	6024	17	00726117	\$35.00
9	6024	16	00726116	\$35.00
10	6024	15	00726115	\$35.00
11	6024	14	00726114	\$35.00
12	6024	13	00726113	\$35.00
13	6024	12	00726112	\$35.00
14	6024	11	00726111	\$35.00
15	6024	10	00726110	\$35.00
16	6024	9	00726109	\$35.00
17	6024	8	00726108	\$35.00
18	6024	7	00726107	\$35.00
19	6024	6	00726106	\$35.00
20	6024	5	00726105	\$35.00
21	6024	4	00726104	\$35.00
22	6024	3	00726103	\$35.00
23	6024	2	00726102	\$35.00
24	6024	1	00726101	\$35.00
65	6024	40	00727101	\$35.00
66	6024	39	00727102	\$35.00
67	6024	38	00727103	\$35.00
68	6024	37	00727104	\$35.00
69	6024	36	00727105	\$35.00
70	6024	35	00727106	\$35.00
71	6024	34	00727107	\$35.00
72	6024	33	00727108	\$35.00
73	6024	32	00727109	\$35.00
74	6024	31	00727110	\$35.00
75	6024	30	00727111	\$35.00
76	6024	29	00727112	\$35.00
77	6024	28	00727113	\$35.00
78	6024	27	00727114	\$35.00
79	6024	26	00727115	\$35.00
80	6024	25	00727116	\$35.00
81	6024	57	00727208	\$35.00
82	6024	56	00727209	\$35.00
83	6024	55	00727210	\$35.00
84	6024	54	00726214	\$35.00

(Fiscal Year 2017-2018)				
<u>ASSESSMENT DIAGRAM NUMBER</u>	<u>CODE</u>	<u>LOT NO.</u>	<u>ASSESSOR'S PARCEL NUMBER</u>	<u>TOTAL ASSESSMENT</u>
85	6024	53	00726213	\$35.00
86	6024	52	00726212	\$35.00
87	6024	51	00726211	\$35.00
88	6024	50	00726210	\$35.00
89	6024	49	00726209	\$35.00
90	6024	48	00726208	\$35.00
91	6024	47	00726207	\$35.00
92	6024	46	00726206	\$35.00
93	6024	45	00726205	\$35.00
94	6024	44	00726204	\$35.00
95	6024	43	00726203	\$35.00
96	6024	42	00726202	\$35.00
97	6024	41	00726201	\$35.00
98	6024	64	00727201	\$35.00
99	6024	63	00727202	\$35.00
100	6024	62	00727203	\$35.00
101	6024	61	00727204	\$35.00
102	6024	60	00727205	\$35.00
103	6024	59	00727206	\$35.00
104	6024	58	00727207	\$35.00
(TRACT NO. 4060)				
25	6024	22	00728123S	\$35.00
26	6024	21	00728122S	\$35.00
27	6024	20	00728121S	\$35.00
28	6024	19	00728120S	\$35.00
29	6024	18	00728119S	\$35.00
30	6024	17	00728118S	\$35.00
31	6024	16	00728117S	\$35.00
32	6024	15	00728116S	\$35.00
33	6024	14	00728115S	\$35.00
34	6024	13	00728114S	\$35.00
35	6024	12	00728113S	\$35.00
36	6024	11	00728112S	\$35.00
37	6024	10	00728111S	\$35.00
38	6024	9	00728110S	\$35.00
39	6024	8	00728109S	\$35.00
40	6024	7	00728108S	\$35.00
41	6024	6	00728107S	\$35.00
42	6024	5	00728106S	\$35.00
43	6024	4	00728105S	\$35.00
44	6024	3	00728104S	\$35.00
45	6024	2	00728103S	\$35.00
46	6024	1	00728102S	\$35.00
47	6024	40	00728218S	\$35.00
48	6024	39	00728217S	\$35.00
49	6024	38	00728216S	\$35.00
50	6024	37	00728215S	\$35.00
51	6024	36	00728214S	\$35.00
52	6024	35	00728213S	\$35.00
53	6024	34	00728212S	\$35.00
54	6024	33	00728211S	\$35.00
55	6024	32	00728210S	\$35.00
56	6024	31	00728209S	\$35.00
57	6024	30	00728208S	\$35.00
58	6024	29	00728207S	\$35.00
59	6024	28	00728206S	\$35.00

			(Fiscal Year 2017-2018)	
<u>ASSESSMENT DIAGRAM NUMBER</u>	<u>CODE</u>	<u>LOT NO.</u>	<u>ASSESSOR'S PARCEL NUMBER</u>	<u>TOTAL ASSESSMENT</u>
60	6024	27	00728205S	\$35.00
61	6024	26	00728204S	\$35.00
62	6024	25	00728203S	\$35.00
63	6024	24	00728202S	\$35.00
64	6024	23	00728201S	\$35.00
(TRACT NO. 4459)				
105	6024	1	00729101S	\$35.00
106	6024	2	00729102S	\$35.00
107	6024	3	00729103S	\$35.00
108	6024	4	00729104S	\$35.00
109	6024	5	00729105S	\$35.00
110	6024	6	00729106S	\$35.00
111	6024	7	00729107S	\$35.00
112	6024	8	00729108S	\$35.00
113	6024	9	00729109S	\$35.00
114	6024	10	00729110S	\$35.00
115	6024	11	00729111S	\$35.00
116	6024	12	00729112S	\$35.00
117	6024	13	00729113S	\$35.00
118	6024	14	00729114S	\$35.00
119	6024	15	00729115S	\$35.00
120	6024	16	00729201S	\$35.00
121	6024	17	00729202S	\$35.00
122	6024	18	00729203S	\$35.00
123	6024	19	00729204S	\$35.00
124	6024	20	00729205S	\$35.00
125	6024	21	00729206S	\$35.00
126	6024	22	00729207S	\$35.00
127	6024	23	00729208S	\$35.00
128	6024	24	00729209S	\$35.00
129	6024	25	00729324S	\$35.00
130	6024	26	00729323S	\$35.00
131	6024	27	00729322S	\$35.00
132	6024	28	00729321S	\$35.00
133	6024	29	00729320S	\$35.00
134	6024	30	00729319S	\$35.00
135	6024	31	00729318S	\$35.00
136	6024	32	00729317S	\$35.00
137	6024	33	00729316S	\$35.00
138	6024	34	00729315S	\$35.00
139	6024	35	00729314S	\$35.00
140	6024	36	00729313S	\$35.00
141	6024	37	00729312S	\$35.00
142	6024	38	00729311S	\$35.00
143	6024	39	00729310S	\$35.00
144	6024	40	00729309S	\$35.00
145	6024	41	00729308S	\$35.00
146	6024	42	00729307S	\$35.00
147	6024	43	00729306S	\$35.00
148	6024	44	00729305S	\$35.00
149	6024	45	00729304S	\$35.00
150	6024	46	00729303S	\$35.00
151	6024	47	00729302S	\$35.00
152	6024	48	00729301S	\$35.00
HACIENDA VILLA APARTMENTS				
153	6024		00730228	\$2,356.00

		(Fiscal Year 2017-2018)		
<u>ASSESSMENT</u>			<u>ASSESSOR'S</u>	<u>TOTAL</u>
<u>DIAGRAM NUMBER</u>	<u>CODE</u>	<u>LOT NO.</u>	<u>PARCEL NUMBER</u>	<u>ASSESSMENT</u>
(TRACT NO. 4608)				
154	6024	1	00729210S	\$35.00
155	6024	2	00729211S	\$35.00
156	6024	3	00729212S	\$35.00
157	6024	4	00729213S	\$35.00
158	6024	5	00729214S	\$35.00
159	6024	6	00729215S	\$35.00
160	6024	7	00729216S	\$35.00
161	6024	8	00729217S	\$35.00
162	6024	9	00729218S	\$35.00
163	6024	10	00729117S	\$35.00
164	6024	11	00729118S	\$35.00
165	6024	12	00729119S	\$35.00
166	6024	13	00729120S	\$35.00
167	6024	14	00729121S	\$35.00
168	6024	15	00729122S	\$35.00
169	6024	16	00729123S	\$35.00
170	6024	17	00729124S	\$35.00
171	6024	18	00729125S	\$35.00
172	6024	19	00729126S	\$35.00
173	6024	20	00729127S	\$35.00
174	6024	21	00729128S	\$35.00
175	6024	22	00729129S	\$35.00
176	6024	23	00729130S	\$35.00
177	6024	24	00729131S	\$35.00
178	6024	44	00730227S	\$35.00
179	6024	43	00730226S	\$35.00
180	6024	42	00730225S	\$35.00
181	6024	41	00730224S	\$35.00
182	6024	40	00730223S	\$35.00
183	6024	39	00730222S	\$35.00
184	6024	38	00730221S	\$35.00
185	6024	37	00730220S	\$35.00
186	6024	36	00730219S	\$35.00
187	6024	35	00730218S	\$35.00
188	6024	34	00730217S	\$35.00
189	6024	33	00730216S	\$35.00
190	6024	32	00730215S	\$35.00
191	6024	31	00730214S	\$35.00
192	6024	30	00730213S	\$35.00
193	6024	29	00730212S	\$35.00
194	6024	28	00730211S	\$35.00
195	6024	27	00730210S	\$35.00
196	6024	26	00730209S	\$35.00
197	6024	25	00730208S	\$35.00
198	6024	24	00730207S	\$35.00
199	6024	23	00730206S	\$35.00
200	6024	22	00730205S	\$35.00
201	6024	4	00730204S	\$35.00
202	6024	3	00730203S	\$35.00
203	6024	2	00730202S	\$35.00
204	6024	1	00730201S	\$35.00
205	6024	14	00730108S	\$35.00
206	6024	15	00730107S	\$35.00
207	6024	16	00730106S	\$35.00
208	6024	17	00730105S	\$35.00

			(Fiscal Year 2017-2018)	
<u>ASSESSMENT DIAGRAM NUMBER</u>	<u>CODE</u>	<u>LOT NO.</u>	<u>ASSESSOR'S PARCEL NUMBER</u>	<u>TOTAL ASSESSMENT</u>
209	6024	18	00730104S	\$35.00
210	6024	19	00730103S	\$35.00
211	6024	20	00730102S	\$35.00
212	6024	21	00730101S	\$35.00
213	6024	5	00730117S	\$35.00
214	6024	6	00730116S	\$35.00
215	6024	7	00730115S	\$35.00
216	6024	8	00730114S	\$35.00
217	6024	9	00730113S	\$35.00
218	6024	10	00730112S	\$35.00
219	6024	11	00730111S	\$35.00
220	6024	12	00730110S	\$35.00
221	6024	13	00730109S	\$35.00
(TRACT NO 4851, PHASE I)				
222	6024	1	00731101S	\$35.00
223	6024	2	00731102S	\$35.00
224	6024	3	00731103S	\$35.00
225	6024	4	00731104S	\$35.00
226	6024	5	00731105S	\$35.00
227	6024	6	00731106S	\$35.00
228	6024	7	00731107S	\$35.00
229	6024	8	00731108S	\$35.00
230	6024	9	00731109S	\$35.00
231	6024	10	00731110S	\$35.00
232	6024	11	00731111S	\$35.00
233	6024	12	00731112S	\$35.00
234	6024	13	00731113S	\$35.00
235	6024	14	00731114S	\$35.00
236	6024	15	00731115S	\$35.00
237	6024	16	00731116S	\$35.00
238	6024	17	00731117S	\$35.00
(TRACT NO. 4851, PHASE I)				
239	6024	18	00731118S	\$35.00
240	6024	19	00731119S	\$35.00
241	6024	20	00731120S	\$35.00
242	6024	21	00731121S	\$35.00
243	6024	22	00731201S	\$35.00
244	6024	23	00731202S	\$35.00
245	6024	24	00731203S	\$35.00
246	6024	25	00731204S	\$35.00
247	6024	26	00731205S	\$35.00
248	6024	27	00731206S	\$35.00
249	6024	28	00731207S	\$35.00
250	6024	29	00731208S	\$35.00
251	6024	30	00731209S	\$35.00
252	6024	31	00731210S	\$35.00
253	6024	32	00731211S	\$35.00
254	6024	33	00731212S	\$35.00
255	6024	34	00731213S	\$35.00
256	6024	35	00731214S	\$35.00
257	6024	36	00731215S	\$35.00
258	6024	37	00731216S	\$35.00
259	6024	38	00731217S	\$35.00
260	6024	39	00731218S	\$35.00
261	6024	40	00731219S	\$35.00
262	6024	41	00731220S	\$35.00

			(Fiscal Year 2017-2018)	
ASSESSMENT DIAGRAM NUMBER	CODE	LOT NO.	ASSESSOR'S PARCEL NUMBER	TOTAL ASSESSMENT
(PORTION OF REMAINDER PARCEL, TRACT 4850)				
263	6024		00725102S	\$1,284.00
(PARCEL MAP 94-1, PARCEL "A")				
264	6024		00706222	\$111.00
(TRACT NO. 4851, PHASE II)				
265	6024	1	00731239S	\$35.00
266	6024	2	00731238S	\$35.00
267	6024	3	00731237S	\$35.00
268	6024	4	00731236S	\$35.00
269	6024	5	00731235S	\$35.00
270	6024	6	00731234S	\$35.00
271	6024	7	00731233S	\$35.00
272	6024	8	00731232S	\$35.00
273	6024	9	00731231S	\$35.00
274	6024	10	00731230S	\$35.00
275	6024	11	00731229S	\$35.00
276	6024	12	00731228S	\$35.00
277	6024	13	00731227S	\$35.00
278	6024	14	00731226S	\$35.00
279	6024	15	00731225S	\$35.00
280	6024	16	00731224S	\$35.00
281	6024	17	00731223S	\$35.00
282	6024	18	00731222S	\$35.00
283	6024	19	00731221S	\$35.00
284	6024	20	00731318S	\$35.00
285	6024	21	00731317S	\$35.00
286	6024	22	00731316S	\$35.00
287	6024	23	00731315S	\$35.00
288	6024	24	00731314S	\$35.00
289	6024	25	00731313S	\$35.00
290	6024	26	00731312S	\$35.00
291	6024	27	00731311S	\$35.00
292	6024	28	00731310S	\$35.00
293	6024	29	00731309S	\$35.00
294	6024	30	00731308S	\$35.00
295	6024	31	00731307S	\$35.00
296	6024	32	00731306S	\$35.00
297	6024	33	00731305S	\$35.00
298	6024	34	00731304S	\$35.00
299	6024	35	00731303S	\$35.00
300	6024	36	00731302S	\$35.00
301	6024	37	00731301S	\$35.00
(TRACT NO. 4851, PHASE III)				
302	6024	1	00731335S	\$35.00
303	6024	2	00731334S	\$35.00
304	6024	3	00731333S	\$35.00
305	6024	4	00731332S	\$35.00
306	6024	5	00731331S	\$35.00
307	6024	6	00731330S	\$35.00
308	6024	7	00731329S	\$35.00
309	6024	8	00731328S	\$35.00
310	6024	9	00731327S	\$35.00
311	6024	10	00731326S	\$35.00
312	6024	11	00731325S	\$35.00
313	6024	12	00731324S	\$35.00

<u>ASSESSMENT DIAGRAM NUMBER</u>	<u>CODE</u>	<u>LOT NO.</u>	(Fiscal Year 2017-2018)	
			<u>ASSESSOR'S PARCEL NUMBER</u>	<u>TOTAL ASSESSMENT</u>
314	6024	13	00731323S	\$35.00
315	6024	14	00731322S	\$35.00
316	6024	15	00731321S	\$35.00
317	6024	16	00731320S	\$35.00
318	6024	17	00731319S	\$35.00
319	6024	18	00731411S	\$35.00
320	6024	19	00731410S	\$35.00
321	6024	20	00731409S	\$35.00
322	6024	21	00731408S	\$35.00
323	6024	22	00731407S	\$35.00
324	6024	23	00731406S	\$35.00
325	6024	24	00731405S	\$35.00
326	6024	25	00731404S	\$35.00
327	6024	26	00731403S	\$35.00
328	6024	27	00731402S	\$35.00
329	6024	28	00731401S	\$35.00
330	6024	29	00732101S	\$35.00
331	6024	30	00732102S	\$35.00
332	6024	31	00732103S	\$35.00
333	6024	32	00732104S	\$35.00
334	6024	33	00732105S	\$35.00
335	6024	34	00732106S	\$35.00
336	6024	35	00732107S	\$35.00
337	6024	36	00732108S	\$35.00
338	6024	37	00732207S	\$35.00
339	6024	38	00732206S	\$35.00
340	6024	39	00732205S	\$35.00
341	6024	40	00732204S	\$35.00
342	6024	41	00732203S	\$35.00
343	6024	42	00732202S	\$35.00
344	6024	43	00732201S	\$35.00
(TRACT 5202)				
346	6024	1	00729155S	\$35.00
347	6024	2	00729154S	\$35.00
348	6024	3	00729153S	\$35.00
349	6024	4	00729152S	\$35.00
350	6024	5	00729151S	\$35.00
351	6024	6	00729150S	\$35.00
352	6024	7	00729149S	\$35.00
353	6024	8	00729148S	\$35.00
354	6024	9	00729147S	\$35.00
355	6024	10	00729146S	\$35.00
356	6024	11	00729145S	\$35.00
357	6024	12	00729144S	\$35.00
358	6024	13	00729143S	\$35.00
359	6024	14	00729142S	\$35.00
360	6024	15	00729141S	\$35.00
361	6024	16	00729140S	\$35.00
362	6024	17	00729139S	\$35.00
363	6024	18	00729138S	\$35.00
364	6024	19	00729137S	\$35.00
365	6024	20	00729136S	\$35.00
366	6024	21	00729135S	\$35.00
367	6024	22	00729134S	\$35.00
368	6024	23	00729133S	\$35.00
369	6024	24	00729132S	\$35.00

			(Fiscal Year 2017-2018)	
<u>ASSESSMENT DIAGRAM NUMBER</u>	<u>CODE</u>	<u>LOT NO.</u>	<u>ASSESSOR'S PARCEL NUMBER</u>	<u>TOTAL ASSESSMENT</u>
370	6024	25	00729414S	\$35.00
371	6024	26	00729413S	\$35.00
372	6024	27	00729412S	\$35.00
373	6024	28	00729411S	\$35.00
374	6024	29	00729410S	\$35.00
375	6024	30	00729409S	\$35.00
376	6024	31	00729408S	\$35.00
377	6024	32	00729407S	\$35.00
378	6024	33	00729406S	\$35.00
379	6024	34	00729405S	\$35.00
380	6024	35	00729404S	\$35.00
381	6024	36	00729403S	\$35.00
382	6024	37	00729402S	\$35.00
383	6024	38	00729401S	\$35.00
(TRACT 5367)				
384	6024	1	00810030	\$35.00
385	6024	2	00810031	\$35.00
386	6024	3	00810032	\$35.00
387	6024	4	00810033	\$35.00
388	6024	5	00810034	\$35.00
389	6024	6	00810035	\$35.00
390	6024	7	00810036	\$35.00
391	6024	8	00810037	\$35.00
(TRACT 5529)				
392	6024	1	00734101S	\$160.80
393	6024	2	00734102S	\$160.80
394	6024	3	00734103S	\$160.80
395	6024	4	00734104S	\$160.80
396	6024	5	00734105S	\$160.80
397	6024	6	00734106S	\$160.80
398	6024	7	00734107S	\$160.80
399	6024	8	00734108S	\$160.80
400	6024	9	00734109S	\$160.80
401	6024	10	00734110S	\$160.80
402	6024	11	00734111S	\$160.80
403	6024	12	00734112S	\$160.80
404	6024	13	00735501S	\$160.80
405	6024	14	00735502S	\$160.80
406	6024	15	00735503S	\$160.80
407	6024	16	00735504S	\$160.80
408	6024	17	00735505S	\$160.80
409	6024	18	00734113S	\$160.80
410	6024	19	00734114S	\$160.80
411	6024	20	00734115S	\$160.80
412	6024	21	00734116S	\$160.80
413	6024	22	00734117S	\$160.80
414	6024	23	00734118S	\$160.80
415	6024	24	00734119S	\$160.80
416	6024	25	00734120S	\$160.80
417	6024	26	00734121S	\$160.80
418	6024	27	00734122S	\$160.80
419	6024	28	00734123S	\$160.80
420	6024	29	00734124S	\$160.80
421	6024	30	00734125S	\$160.80
422	6024	31	00734126S	\$160.80
423	6024	32	00734127S	\$160.80

		(Fiscal Year 2017-2018)		
<u>ASSESSMENT DIAGRAM NUMBER</u>	<u>CODE</u>	<u>LOT NO.</u>	<u>ASSESSOR'S PARCEL NUMBER</u>	<u>TOTAL ASSESSMENT</u>
424	6024	33	00734128S	\$160.80
425	6024	34	00734129S	\$160.80
426	6024	35	00734130S	\$160.80
427	6024	36	00734131S	\$160.80
428	6024	37	00734132S	\$160.80
429	6024	38	00734133S	\$160.80
430	6024	39	00734134S	\$160.80
431	6024	40	00734135S	\$160.80
432	6024	41	00734136S	\$160.80
433	6024	42	00734137S	\$160.80
434	6024	43	00734138S	\$160.80
435	6024	44	00734201S	\$160.80
436	6024	45	00734202S	\$160.80
437	6024	46	00734203S	\$160.80
438	6024	47	00734204S	\$160.80
439	6024	48	00734205S	\$160.80
440	6024	49	00734206S	\$160.80
441	6024	50	00734207S	\$160.80
442	6024	51	00734208S	\$160.80
443	6024	52	00734209S	\$160.80
444	6024	53	00734210S	\$160.80
445	6024	54	00734211S	\$160.80
446	6024	55	00734212S	\$160.80
447	6024	56	00734213S	\$160.80
448	6024	57	00734214S	\$160.80
449	6024	58	00734215S	\$160.80
450	6024	59	00736001S	\$160.80
451	6024	60	00736002S	\$160.80
452	6024	61	00736003S	\$160.80
453	6024	62	00736004S	\$160.80
454	6024	63	00736005S	\$160.80
455	6024	64	00736006S	\$160.80
456	6024	65	00736007S	\$160.80
457	6024	66	00736008S	\$160.80
458	6024	67	00736009S	\$160.80
459	6024	68	00736010S	\$160.80
460	6024	69	00736011S	\$160.80
461	6024	70	00736012S	\$160.80
462	6024	71	00736013S	\$160.80
463	6024	72	00736014S	\$160.80
464	6024	73	00736015S	\$160.80
465	6024	74	00736016S	\$160.80
466	6024	75	00736017S	\$160.80
467	6024	76	00736018S	\$160.80
468	6024	77	00736019S	\$160.80
469	6024	78	00736020S	\$160.80
470	6024	79	00735101S	\$160.80
471	6024	80	00735102S	\$160.80
472	6024	81	00735103S	\$160.80
473	6024	82	00735104S	\$160.80
474	6024	83	00735105S	\$160.80
475	6024	84	00735601S	\$160.80
476	6024	85	00735602S	\$160.80
477	6024	86	00735603S	\$160.80
478	6024	87	00735604S	\$160.80
479	6024	88	00735605S	\$160.80

			(Fiscal Year 2017-2018)	
<u>ASSESSMENT DIAGRAM NUMBER</u>	<u>CODE</u>	<u>LOT NO.</u>	<u>ASSESSOR'S PARCEL NUMBER</u>	<u>TOTAL ASSESSMENT</u>
480	6024	89	00735606S	\$160.80
481	6024	90	00735607S	\$160.80
482	6024	91	00735608S	\$160.80
483	6024	92	00735609S	\$160.80
484	6024	93	00735610S	\$160.80
485	6024	94	00735611S	\$160.80
486	6024	95	00735612S	\$160.80
487	6024	96	00735613S	\$160.80
488	6024	97	00735614S	\$160.80
489	6024	98	00735615S	\$160.80
490	6024	99	00735616S	\$160.80
491	6024	100	00735617S	\$160.80
492	6024	101	00735618S	\$160.80
493	6024	102	00735619S	\$160.80
494	6024	103	00735620S	\$160.80
495	6024	104	00735621S	\$160.80
496	6024	105	00735622S	\$160.80
497	6024	106	00735623S	\$160.80
498	6024	107	00735624S	\$160.80
499	6024	108	00735625S	\$160.80
500	6024	109	00735626S	\$160.80
501	6024	110	00735627S	\$160.80
502	6024	111	00735628S	\$160.80
503	6024	112	00735629S	\$160.80
504	6024	113	00735630S	\$160.80
505	6024	114	00735631S	\$160.80
506	6024	115	00735206S	\$160.80
507	6024	116	00735207S	\$160.80
508	6024	117	00735208S	\$160.80
509	6024	118	00735209S	\$160.80
510	6024	119	00735210S	\$160.80
511	6024	120	00735201S	\$160.80
512	6024	121	00735202S	\$160.80
513	6024	122	00735203S	\$160.80
514	6024	123	00735204S	\$160.80
515	6024	124	00735205S	\$160.80
516	6024	125	00735308S	\$160.80
517	6024	126	00735309S	\$160.80
518	6024	127	00735310S	\$160.80
519	6024	128	00735311S	\$160.80
520	6024	129	00735312S	\$160.80
521	6024	130	00735313S	\$160.80
522	6024	131	00735314S	\$160.80
523	6024	132	00735315S	\$160.80
524	6024	133	00736039S	\$160.80
525	6024	134	00736040S	\$160.80
526	6024	135	00736041S	\$160.80
527	6024	136	00736042S	\$160.80
528	6024	137	00736043S	\$160.80
529	6024	138	00736044S	\$160.80
530	6024	139	00736045S	\$160.80
531	6024	140	00736046S	\$160.80
532	6024	141	00735301S	\$160.80
533	6024	142	00735302S	\$160.80
534	6024	143	00735303S	\$160.80
535	6024	144	00735304S	\$160.80

<u>ASSESSMENT DIAGRAM NUMBER</u>	<u>CODE</u>	<u>LOT NO.</u>	(Fiscal Year 2017-2018)	
			<u>ASSESSOR'S PARCEL NUMBER</u>	<u>TOTAL ASSESSMENT</u>
536	6024	145	00735305S	\$160.80
537	6024	146	00735306S	\$160.80
538	6024	147	00735307S	\$160.80
539	6024	148	00735401S	\$160.80
540	6024	149	00735402S	\$160.80
541	6024	150	00735403S	\$160.80
542	6024	151	00736047S	\$160.80
543	6024	152	00736048S	\$160.80
544	6024	153	00736049S	\$160.80
545	6024	154	00734401S	\$160.80
546	6024	155	00734402S	\$160.80
547	6024	156	00734403S	\$160.80
548	6024	157	00734404S	\$160.80
549	6024	158	00734405S	\$160.80
550	6024	159	00734406S	\$160.80
551	6024	160	00734305S	\$160.80
552	6024	161	00734306S	\$160.80
553	6024	162	00734307S	\$160.80
554	6024	163	00734308S	\$160.80
555	6024	164	00734309S	\$160.80
556	6024	165	00734301S	\$160.80
557	6024	166	00734302S	\$160.80
558	6024	167	00734303S	\$160.80
559	6024	168	00734304S	\$160.80
560	6024	169	00736021S	\$160.80
561	6024	170	00736022S	\$160.80
562	6024	171	00736023S	\$160.80
563	6024	172	00736024S	\$160.80
564	6024	173	00736025S	\$160.80
565	6024	174	00736026S	\$160.80
566	6024	175	00736027S	\$160.80
567	6024	176	00736028S	\$160.80
568	6024	177	00736029S	\$160.80
569	6024	178	00736030S	\$160.80
570	6024	179	00736031S	\$160.80
571	6024	180	00736032S	\$160.80
572	6024	181	00736033S	\$160.80
573	6024	182	00736034S	\$160.80
574	6024	183	00736035S	\$160.80
575	6024	184	00736036S	\$160.80
576	6024	185	00736037S	\$160.80
577	6024	186	00736038S	\$160.80

PART D

METHOD OF APPORTIONMENT OF ASSESSMENT

LANDSCAPING AND LIGHTING MAINTENANCE DISTRICT NO. 1

(Pursuant to the Landscaping and Lighting Act of 1972)

Method of Assessment Spread

The basic objective of the Assessment Spread is to distribute costs in accordance with the benefits received. Costs are to be spread equally to each residential unit (RU) as follows:

- (a) For 2017-2018, Tracts 4010, 4060, 4459, 4608, 4850, 5202, 5367, 4851 Phases I, II, III, Parcel "A", Parcel "B" and Hacienda Villa Apartments have been completed and accepted by the City. The combined tracts consist of 390 lots or parcels. Each single-family residential lot is considered an assessable unit. The total square footage of each multi-residential lot is divided by 6,000 square feet to determine the number of assessable units for each multi-residential lot. There are a total of 387 single-family RU lots and 3 multi-residential lots consisting of 107.17 RU lots for a total of 494.17 RU assessable units, each of which benefit equally from the improvements maintained by this landscaping and lighting maintenance district.
- (b) For 2017-2018, Tract 5529 has been completed and accepted by the City. The total number of RU lots in this subdivision is 186, each of which benefit equally from the improvements maintained by this landscaping and lighting maintenance district.

Computing Individual Assessment

- (a) The total number of assessable units is 494.17 RU. The assessment will be \$35.00 per RU for 2017-2018 due to the limitations of assessments below. The total calculated amount to be assessed for Fiscal Year 2017-2018 is \$17,296.00 based on \$35.00 multiplied by 494.17. This sentence does not apply to Tract 5529.
- (b) The total number of assessable units is 186 RU. The maximum allowable assessment increase is equal to the change in CPI and shall not exceed 3.0%. Since the change in CPI was 3.5%, the increase in assessment is limited to 3.0%. Consequently, the total estimated assessable cost of \$59,808.00 will not be fully recovered through the FY 2017/2018 assessment since the maximum assessable amount is limited to the FY 2016/2017 assessment escalated by 3.0%, or \$29,041.05 x 1.03, equaling \$29,912.28. The assessment will be \$160.80* per RU for 2017-2018. This applies only to Tract 5529.

* Amount was rounded down one cent to conform to County Auditor requirements that the amount to be billed to the taxpayer must be an even amount (divisible by 2).

Limitations On Assessments

- (a) Normally, the assessable costs may be revised upon preparation of the Engineer's Report for each fiscal year for which assessments are to be levied and collected as provided for in the Landscaping and Lighting Act of 1972 (State Streets and Highways Code Section 22500) and Division 15 Part 2 as amended per Proposition 218; however, this assessment district was created utilizing a fixed assessment of \$35.00 per assessable unit. This sentence does not apply to Tract 5529.
- (b) This Subsection (b) only applies to Tract 5529. Assessments in each successive year are subject to an annual adjustment tied to the Consumer Price Index-U for the San Francisco Bay Area as of December of each succeeding year (the "CPI"), with a maximum annual CPI adjustment not to exceed 3%. The calculation of the change in the CPI shall use

December 2006 as the base year CPI. In the event that the annual change in the CPI exceeds 3%, any percentage change in excess of 3% can be cumulatively reserved and can be added to the annual change in the CPI for years in which the CPI change is less than 3%. If the actual assessment rate for any given year is not increased by an amount equal to a minimum of 3% or the yearly CPI change plus any CPI change in previous years that was in excess of 3%, the maximum authorized assessment shall increase by this amount. In such event, the maximum authorized assessment shall be equal to the base year assessment as adjusted by the increase to the CPI, plus any and all CPI adjustments deferred in any and all prior years.

The increases in these assessments, according to the formula described above, was approved by a majority vote of the owners of the lots in Tract No. 5529 voting in a land owner ballot proceeding on the issue of the assessment conducted on August 6, 2007, in accordance with Article XIID of the California Constitution and Section 53753 of the California Government Code.

The following table indicates the annual CPI changes since December 2006 as well as the changes to the assessment for previous years and this year.

Annual CPI		CPI Change	Fiscal Year	Assessment Change
December 2006	210.4			
December 2007	218.485	3.84%	2008-2009	3.00%
December 2008	218.528	0.02%	2009-2010	0.86%
December 2009	224.239	2.61%	2010-2011	0.00%
December 2010	227.658	1.52%	2011-2012	-1.43%
December 2011	234.327	2.9%	2012-2013	2.9%
December 2012	239.533	2.2%	2013-2014	-14.66%
December 2013	245.711	2.6%	2014-2015	2.65%
December 2014	252.273	2.7%	2015-2016	2.7%
December 2015	260.289	3.2%	2016-2017	3.00%
December 2016	269.483	3.5%	2017-2018	3.00%

The maximum annual CPI adjustment is not to exceed 3%. In accordance with the foregoing limitations, the assessment for 2017-2018 will be \$160.80 per RU.

PART E

PROPERTY OWNERS LIST

LANDSCAPING AND LIGHTING MAINTENANCE DISTRICT NO. 1

(Pursuant to the Landscaping and Lighting Act of 1972)

The names and addresses of each property owner are shown on the County Assessor's Tax Assessment Roll as identified by the Assessor's Parcel Number in Part C of this report.

PART F
ASSESSMENT DIAGRAM

LANDSCAPING AND LIGHTING MAINTENANCE DISTRICT NO. 1

(Pursuant to the Landscaping and Lighting Act of 1972)

The assessment and boundary diagrams for these proceedings, entitled "Assessment Diagram of City of Firebaugh Landscaping and Lighting Maintenance District No. 1" and "Boundary Diagram of City of Firebaugh Landscaping and Lighting Maintenance District No. 1" are on file in City Hall and attached hereto and made a part hereof and as amended to show new land divisions or annexations of new parcels to the district.

DESCRIPTION OF THE BOUNDARY

The exterior boundary of this District is shown on a map entitled, "Boundary Diagram of City of Firebaugh Landscaping and Lighting Maintenance District No. 1", which is on file in City Hall and attached hereto and made a part hereof and as amended to show new land divisions or annexations of new parcels to the district. The District boundary is further described as follows:

- A. Tract 4010, Valle De Paz, in the City of Firebaugh, County of Fresno, State of California, as recorded in Volume 48 of Plats, at Page 22, Fresno County Records.
- B. Tract 4060, Valle De Paz II, in the City of Firebaugh, County of Fresno, State of California, as recorded in Volume 49 of Plats, at Page 49, Fresno County Records.
- C. A parcel lying adjacent to a portion of the North side of Tract 4060, being more particularly described as follows:

Beginning at the most northerly corner of Lot 1 of Tract 4060, Valle De Paz II, in the City of Firebaugh, County of Fresno, thence north along the westerly right-of-way of Storey Road a distance of 115.00 feet to a point; thence west perpendicular to said right-of-way a distance of 335.00 feet to a point; thence South, parallel to said right-of-way a distance of 375.00 feet to a point on the northerly boundary of said Tract 4060; thence northerly along said northerly boundary to the most northerly corner of Lot 1, said point being the Point of Beginning.
- D. Tract 4459, Riverview Estates, in the City of Firebaugh, County of Fresno, as recorded in Volume 54 of Plats at Pages 54 and 55, Fresno County Records.
- E. Hacienda Villa Apartments:

Beginning at the Northeast corner of Parcel B according to the map entitled "Parcel Map No. 84-1 in the City of Firebaugh, County of Fresno, California," recorded in Book 42 of Parcel Maps at Page 80, Fresno County Records, said point being on the West line of a 60-foot street known as Storey Avenue; thence South 89°37'00" East 60.00 feet to the East line of Storey Avenue; thence along the East line of Storey Avenue North 00°23'00" East 160.00 feet to the True Point of Beginning; thence continuing along the East line of Storey Avenue North 00°23'00" East 535.00 feet; thence South 89°37'00" East 535.00 feet; thence South 00°23'00" West, 535.00 feet; thence North 89°37'00" West 535.00 feet to the True Point of Beginning.
- G. Tract 4608, Riverview Estates, Phase II, in the City of Firebaugh, County of Fresno, State of California, as recorded in Volume 56 of Plats, at Pages 26 and 27, Fresno County Records.
- H. Tract 4850, Cerca Del Rio, in the City of Firebaugh, County of Fresno, State of California, as recorded in Volume 63 of Plats, at pages 8 and 9, Fresno County Records.

- H. Tract No. 4851, Phase 1, Cerca Del Rio II, in the City of Firebaugh, County of Fresno, State of California, as recorded in Volume 64 of Plats at page 17, Fresno County Records.
- I. Parcel "A" of Parcel Map 94-1, in the City of Firebaugh, County of Fresno, State of California, as recorded in Volume 25 of Parcel Maps at page 57, Fresno County Records.
- J. Parcel "B" being a portion of remainder Parcel as shown on the map of Tract No. 4850 as recorded in Volume 63 at pages 8 and 9, Fresno County Records.
- K. Tract No. 4851, Phase II, Cerca Del Rio II, in the City of Firebaugh, County of Fresno, and State of California as recorded in Volume 64 of Plats at page 80, Fresno County Records.
- L. Tract No. 4851, Phase III, Cerca Del Rio II, in the City of Firebaugh, County of Fresno, State of California, as recorded Volume 65 of Plats at page 12, Fresno County Records.
- M. Tract 5202, Cerca Del Rio III, in the City of Firebaugh, County of Fresno, State of California, as recorded in Volume 68 of Plats, at Pages 70 and 71, Fresno County Records.
- N. Tract 5367, in the City of Firebaugh, County of Fresno, State of California, as recorded in Volume 71 of Plats, at pages 59 and 60, Fresno County Records.
- O. Tract 5529, in the City of Firebaugh, County of Fresno, State of California, as recorded in Volume 78 of Plats, at pages 79 through 82, Fresno County Records.

CLERK'S CERTIFICATION TO COUNTY AUDITOR
LANDSCAPING AND LIGHTING MAINTENANCE DISTRICT NO. 1

(Pursuant to the Landscaping and Lighting Act of 1972)

TO THE COUNTY AUDITOR OF THE COUNTY OF FRESNO:

I do hereby certify that the attached document is a true copy of that certain Engineer's Report, including assessment and assessment and boundary diagrams, for Assessment District No. 1, City of Firebaugh, confirmed by the City Council of the City of Firebaugh on the day of July, 2017, by its Resolution No. 17-_____.

The document is certified, and is filed with you, pursuant to Section 22641 of the Streets and Highways Code.

Dated: _____

City Clerk
City of Firebaugh

[SEAL]

LANDSCAPING AND LIGHTING MAINTENANCE DISTRICT No. 1 ASSESSMENT DIAGRAM CITY OF FIREBAUGH, FRESNO COUNTY CALIFORNIA

NOTES

1. ALL PARCELS SHOWN ON THIS DIAGRAM ARE LOCATED WITHIN THE CITY OF FIREBAUGH CITY LIMITS.
2. A PARCEL LYING ADJACENT TO A PORTION OF THE NORTH SIDE OF TRACT 4080, BEING MORE PARTICULARLY DESCRIBED AS FOLLOWS:
BEGINNING AT THE MOST NORTHERLY CORNER OF LOT 1 OF TRACT 4080, VALLE DE PAZ II, IN THE CITY OF FIREBAUGH, COUNTY OF FRESNO, THENCE NORTH ALONG THE WESTERLY RIGHT-OF-WAY OF STOREY ROAD A DISTANCE OF 115.00 FEET TO A POINT; THENCE WEST ALONG THE WESTERLY RIGHT-OF-WAY OF STOREY ROAD A DISTANCE OF 375.00 FEET TO A POINT; THENCE SOUTH, PARALLEL TO AND RIGHT-OF-WAY A DISTANCE OF 375.00 FEET TO A POINT ON THE NORTHERLY BOUNDARY OF SAID TRACT 4080; THENCE NORTHERLY ALONG SAID NORTHERLY BOUNDARY TO THE MOST NORTHERLY CORNER OF LOT 1, SAID POINT BEING THE POINT OF BEGINNING.
3. HACIENDA VALLE APARTMENTS:
BEGINNING AT THE NORTHEAST CORNER OF PARCEL 8 ACCORDING TO THE MAP OF PARCELS 8 AND 9, BEING MORE PARTICULARLY DESCRIBED AS FOLLOWS:
FIREBAUGH COUNTY OF FRESNO, CALIFORNIA, RECORDED IN BOOK 42 OF PARCEL MAPS AT PAGE 80, FRESNO COUNTY RECORDS, SAID POINT BEING ON THE WEST LINE OF A 60-FOOT STREET KNOWN AS STOREY AVENUE; THENCE SOUTH 89°37'00" EAST 60.00 FEET TO THE EAST LINE OF STOREY AVENUE; THENCE ALONG THE EAST LINE OF STOREY AVENUE TO THE NORTHEAST CORNER OF PARCEL 8, BEING THE POINT OF BEGINNING; THENCE CONTINUING ALONG THE EAST LINE OF STOREY AVENUE NORTH 00°23'00" EAST, 535.00 FEET; THENCE SOUTH 89°37'00" EAST 535.00 FEET; THENCE SOUTH 00°23'00" WEST, 338.00 FEET; THENCE NORTH 89°37'00" WEST 538.00 FEET TO THE TRUE POINT OF BEGINNING.



THIS DOCUMENT AND THE CONCEPTS AND DESIGN PRESENTED HEREIN, AS AN INSTRUMENT OF SERVICE, IS THE PROPERTY OF GOUTVITA ENGINEERING, INC. AND IS INTENDED ONLY FOR THE PROJECT AND CLIENT SPECIFICALLY IDENTIFIED HEREON. IT IS NOT TO BE REPRODUCED, COPIED, OR TRANSMITTED IN ANY FORM OR BY ANY MEANS, ELECTRONIC OR MECHANICAL, WITHOUT WRITTEN AUTHORIZATION BY GOUTVITA ENGINEERING, INC.

CITY OF FIREBAUGH

ASSESSMENT DIAGRAM

CITY WIDE LANDSCAPING AND LIGHTING

DISTRICT NO. 1

CITY OF FIREBAUGH

COUNTY OF FRESNO, STATE OF CALIFORNIA



GOUTVITA ENGINEERING, INC.

CONSULTING ENGINEERS

456 Sixth Street • Oxnard, California 93027 • Telephone (209) 854-3300

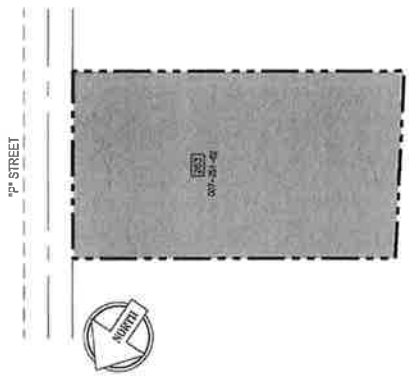
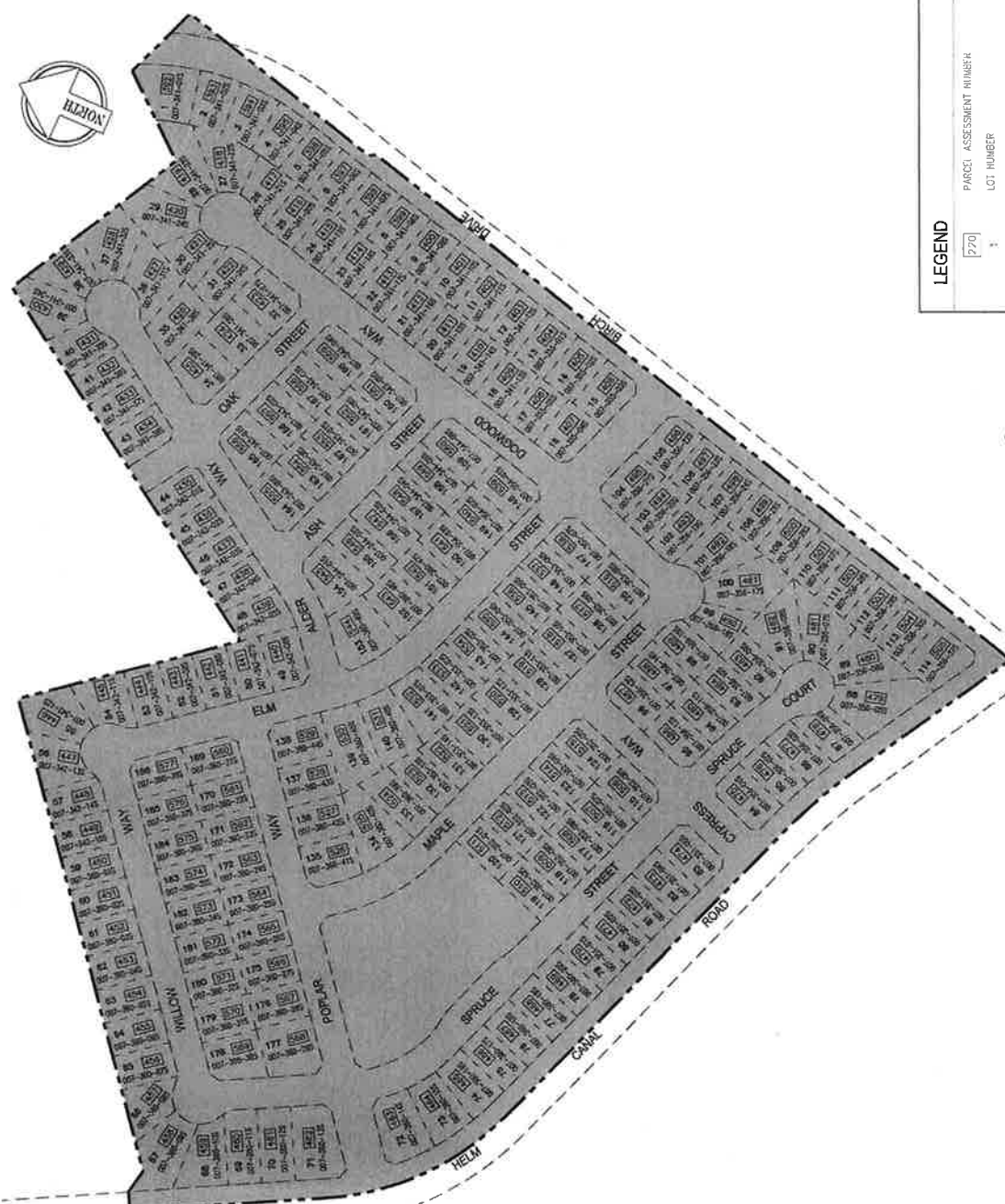
SHEET NUMBER

1 of 4

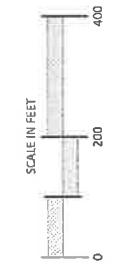
AN ASSESSMENT WAS LEVIED BY THE CITY COUNCIL OF THE CITY OF FIREBAUGH ON MAY 30, 2017, FOR THE CITY OF FIREBAUGH, FRESNO COUNTY, CALIFORNIA. THE ASSESSMENT WAS LEVIED ON THE BASIS OF THE CITY OF FIREBAUGH'S ASSESSMENT ROLL FOR THE YEAR 2017. BY SAID COUNCIL'S ADOPTION OF RESOLUTION NO. 2017-001, SAID ASSESSMENT DIAGRAM AND THE ASSESSMENT ROLL WERE RECORDED IN THE OFFICE OF THE CITY CLERK OF SAID CITY ON THE DAY OF 2017. REFERENCE IS MADE TO SAID ASSESSMENT ROLL RECORDED IN THE OFFICE OF THE CITY CLERK FOR THE EXACT AMOUNT OF EACH ASSESSMENT LEVIED AGAINST EACH PARCEL OF LAND SHOWN ON THIS ASSESSMENT DIAGRAM.

BY: CITY CLERK OF THE CITY OF FIREBAUGH

May 30, 2017 - 2:52pm
V:\CD\798107\cityclerk\mca137 181950002-981.DWG



PARCEL "A"



THIS DOCUMENT AND THE CONCEPTS AND DESIGN PRESENTED HEREIN ARE THE PROPERTY OF GOUVEIA ENGINEERING, INC. AND IS INTENDED ONLY FOR THE USE OF THE CITY OF FIREBAUGH. IT IS NOT TO BE REPRODUCED, COPIED, OR TRANSMITTED IN ANY FORM OR BY ANY MEANS, ELECTRONIC OR MECHANICAL, INCLUDING PHOTOCOPYING, RECORDING, OR BY ANY INFORMATION STORAGE AND RETRIEVAL SYSTEM, WITHOUT THE WRITTEN AUTHORIZATION BY GOUVEIA ENGINEERING, INC.

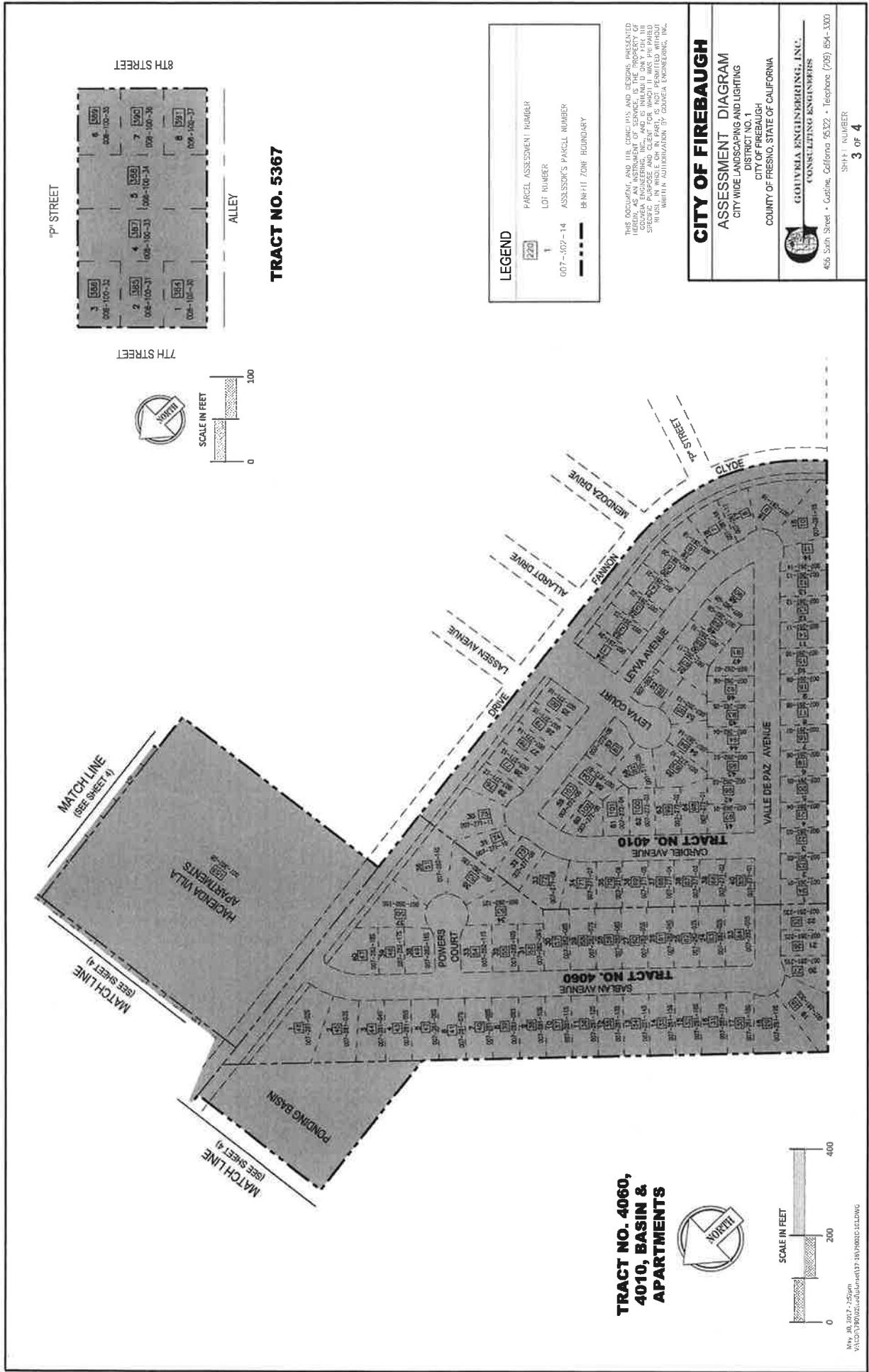
CITY OF FIREBAUGH
ASSESSMENT DIAGRAM
 CITY WIDE LANDSCAPING AND LIGHTING
 DISTRICT NO. 1
 CITY OF FIREBAUGH
 COUNTY OF FRESNO, STATE OF CALIFORNIA

GOUVEIA ENGINEERING, INC.
 CONSULTING ENGINEERS
 455 5th Street • Oxnard, California 93037 • Telephone (805) 854-3300

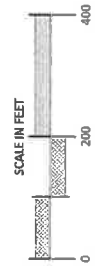
SHEET NUMBER
2 OF 4

LEGEND		
Parcel Assessment Number	770	
Lot Number	1	
Assessor's Parcel Number	007-352-14	
Boundary Zone Boundary	---	

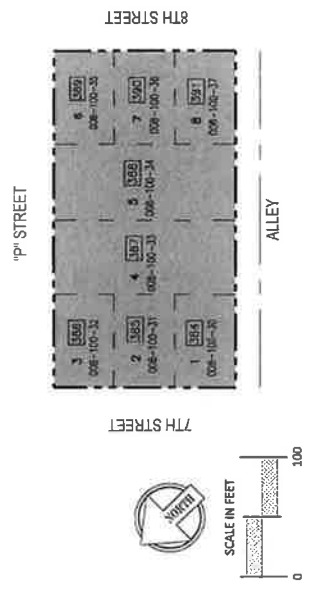
TRACT NO. 5529



**TRACT NO. 4060,
4010, BASIN &
APARTMENTS**



May 30, 2017 2:25pm
V:\CITY\PROJECTS\4010\4010_4060_4010.dwg



TRACT NO. 5367

LEGEND			
	PARCEL ASSESSMENT NUMBER		
	LOT NUMBER		
	ASSESSOR'S PARCEL NUMBER		
	BENEFIT ZONE BOUNDARY		

THIS DOCUMENT, AND THE CADD, MAPS AND DESIGNS PRESENTED HEREIN, AS AN INSTRUMENT OF SERVICE, IS THE PROPERTY OF GONZALEZ ENGINEERING, INC. AND IS INTENDED ONLY FOR THE PROJECT AND SITE SPECIFICALLY IDENTIFIED HEREON. IT IS NOT TO BE USED, IN WHOLE OR IN PART, FOR ANY OTHER PROJECT WITHOUT THE WRITTEN AUTHORIZATION OF GONZALEZ ENGINEERING, INC.

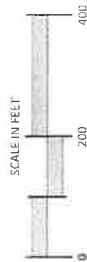
CITY OF FIREBAUGH

ASSESSMENT DIAGRAM
CITY WIDE LANDSCAPING AND LIGHTING
DISTRICT NO. 1
CITY OF FIREBAUGH
COUNTY OF FRESNO, STATE OF CALIFORNIA

GONZALEZ ENGINEERING, INC.
CONSULTING ENGINEERS
455 5th Street • Clovis, California 95322 • Telephone (559) 854-1000

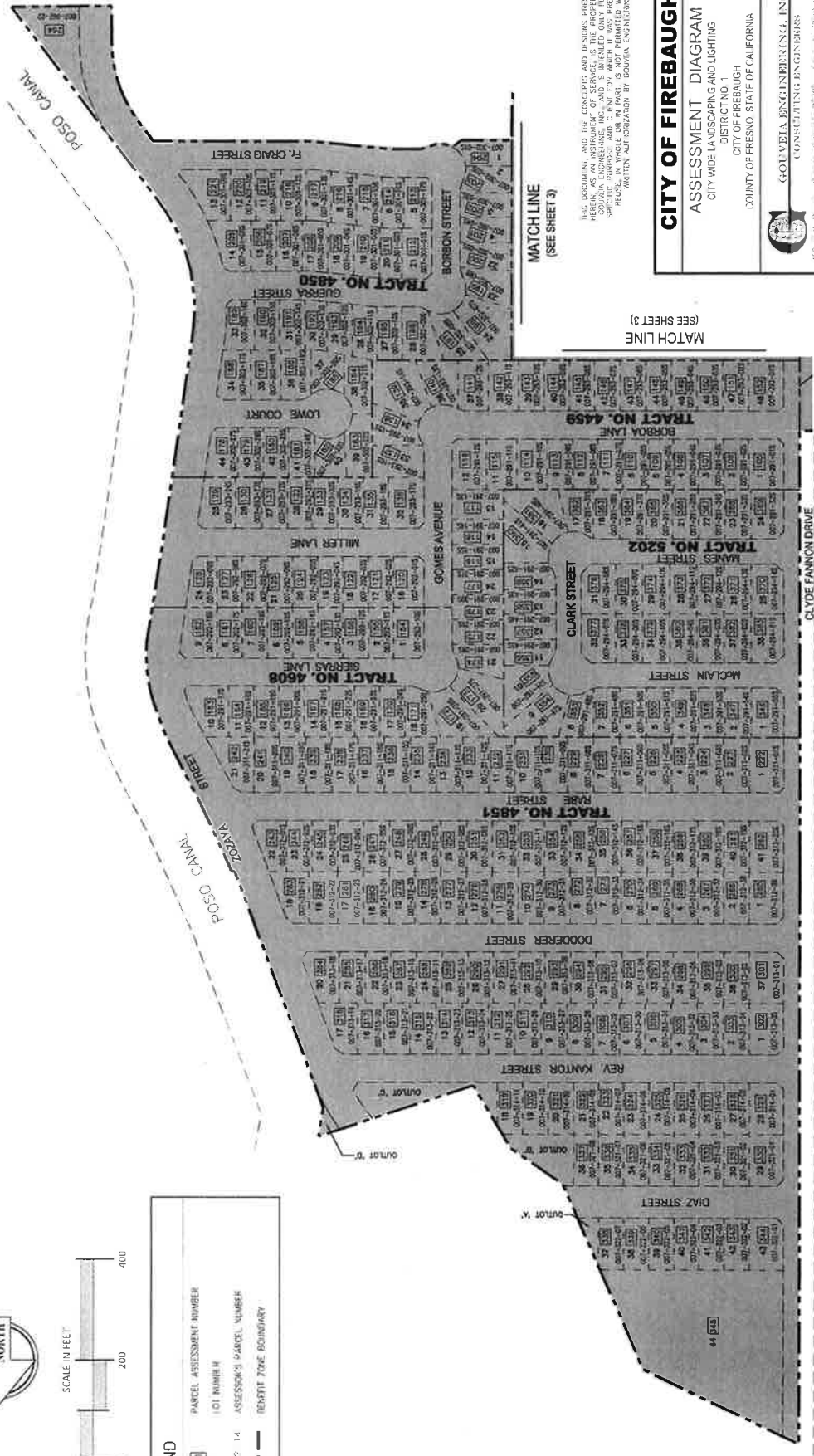
SHEET NUMBER
3 of 4

**TRACT NO. 4851,
4608, 5202, 4459,
4850**



LEGEND

	PARCEL ASSESSMENT NUMBER
	LOT NAME
	ASSESSOR'S PARCEL NUMBER
	RESSET ZONE BOUNDARY



THE PLANS, SPECIFICATIONS, AND ALL DOCUMENTS AND RECORDS HERETO PERTAINING, AS AN INSTRUMENT OF SERVICE, IS THE PROPERTY OF GONDA ENGINEERING, INC. AND IS LOANED ONLY FOR THE PROJECT AND SITE SPECIFIC PURPOSES. IT IS NOT TO BE REPRODUCED, COPIED, OR TRANSMITTED IN ANY MANNER WITHOUT THE WRITTEN AUTHORIZATION OF GONDA ENGINEERING, INC.

**MATCH LINE
(SEE SHEET 2)**

**MATCH LINE
(SEE SHEET 3)**

CITY OF FIREBAUGH

ASSESSMENT DIAGRAM

CITY WIDE LANDSCAPING AND LIGHTING
DISTRICT NO. 1
CITY OF FIREBAUGH
COUNTY OF FRESNO STATE OF CALIFORNIA



GONDA ENGINEERING, INC.
CONSULTING ENGINEERS
455 South Street • Clovis, California 95622 • Telephone (203) 894-3302

SHEET NUMBER
4 OF 4



TO: Mayor Brady Jenkins and Council Members
FROM: Pio Martin, Finance Director
DATE: June 05, 2017
SUBJECT: City Grants Preliminary Budgets Fiscal Year 2017-2018

➤ City Grants

- The City currently has four (5) grants totaling over \$3.8 million dollars. The grant projects range from highway beautifications, new infrastructures, to pedestrian trails, to code enforcement.

➤ Total Budget for City Grants Budget

Fund	Revenue	Salaries	Operation Expense	Net Revenue
City Grants	3,817,279	23,670	3,817,279	0.00

- New grant ATPL-5224(022) Fund 112 – ATP Cycle 2 Trail Rehabilitation & Pedestrian Improvement.
- Funds for Program Administration and Design (PA&D) \$25,000.
 - Funds for Plan, Specification and Estimate (PS&E) \$39,000.

Construction phase schedule for fiscal year 2018-19, in the amount of \$306,535 with a match of \$4,000 from the City.

➤ Ongoing grants from previous fiscal year

- Highway 33 Beautification Fund 078
- Beverage Recycling Fund 081
- Waste Water Treatment Plant Improvements Fund 110
- Senior Center, Water, and Code Enforcement Fund 123

➤ Grants completed from previous fiscal year

- Poso Canal Fund 065
- Dunkle, Park, River Lane, & 12th Streets Fund 103
- Las Deltas Water Project Fund 107
- Charge Up Program Fund 111

Grants Revenue and Expense

<u>Revenue</u>	<u>Description</u>	<u>Three Year Average</u>	<u>Adopted Budget FYE 2017</u>	<u>Actual FYE 2017 Thru 03/2016</u>	<u>Proposed Budget FY 2017-2018</u>
3801	Grant Income	1,667	2,005,000	17,913	2,044,624
3841	Hwy 33 Beautification	2,874	1,778,797	1,550	1,772,655
	Total Revenue	4,540	3,783,797	19,463	3,817,279
	Percentage Increase / (Decrease)		99.88%	0.51%	0.88%
	Dollar Amount Increase / (Decrease)		3,779,256	(3,764,334)	33,483

<u>Expense Code</u>	<u>Description</u>	<u>Three Year Average</u>	<u>Adopted Budget FYE 2017</u>	<u>Actual FYE 2017 Thru 03/2016</u>	<u>Proposed Budget FY 2017-2018</u>
1000	Salaries & Wages	-	22,000	19,007	22,000
1010	FICA	-	1,670	1,112	1,670
1011	Health Insurance	-	2,075	-	-
1013	PERS Retirement	-	3,475	-	-
	Total Salaries	-	29,220	20,284	23,670
	Percentage Increase / (Decrease)		100.00%	69.42%	-18.99%
	Dollar Amount Increase / (Decrease)		29,220	(8,936)	(5,550)
2008	Janitorial Supplies	-	5,000	-	5,000
3507	Inspection	-	63,803	-	63,803
3513	Other Professional Services	1,269	139,535	33,515	100,000
4102	Preliminary Engineering	2,703	6,142	7,638	314,000
4103	Construction Engineering	-	150,000	-	150,000
4104	Construction	-	1,622,655	-	1,622,655
5032	AB-3229 Two Lap Top Computers	716	1,123,442	111,298	965,118
5306	Senior Center Remodel	-	644,000	70,967	573,033
	Total Expenses	5,559	3,754,577	226,647	3,793,609
	Percentage Increase / (Decrease)		99.85%	6.04%	1.04%
	Dollar Amount Increase / (Decrease)		3,749,017	(3,527,930)	39,033
	Total Salaries & Expenses	5,559	3,783,797	246,930	3,817,279
	Percentage Increase / (Decrease)		99.85%	6.53%	0.88%
	Dollar Amount Increase / (Decrease)		3,778,237	(3,536,866)	33,483
	Total Net	(1,019)	-	(227,468)	(0)
	Percentage Increase / (Decrease)		0.00%	0.00%	0.00%
	Dollar Amount Increase / (Decrease)		1,019	(227,468)	(0)

<u>Revenue</u>	<u>Description</u>	<u>Three Year Average</u>	<u>Adopted Budget FYE 2017</u>	<u>Actual FYE 2017 Thru 03/2016</u>	<u>Proposed Budget FY 2017-2018</u>
3841	Hwy 33 Beautification	2,874	1,778,797	1,550	1,772,655
	Total Revenue	2,874	1,778,797	1,550	1,772,655
	Percentage Increase / (Decrease)	-77.99%	138949.95%		-0.35%
	Dollar Amount Increase / (Decrease)	(10,185)	1,777,517		(6,142)

<u>Expense Code</u>	<u>Description</u>	<u>Three Year Average</u>	<u>Adopted Budget FYE 2017</u>	<u>Actual FYE 2017 Thru 03/2016</u>	<u>Proposed Budget FY 2017-2018</u>
4102	Preliminary Engineering	2,703	6,142	7,638	-
4103	Construction Engineering	-	150,000	-	150,000
4104	Construction	-	1,622,655	-	1,622,655
	Total Expenses	2,934	1,778,797	8,510	1,772,655
	Percentage Increase / (Decrease)	-77.53%	121703.67%		-0.35%
	Dollar Amount Increase / (Decrease)	(10,125)	1,777,336		(6,142)
	Total Salaries & Expenses	2,934	1,778,797	8,510	1,772,655
	Percentage Increase / (Decrease)	-77.53%	121703.67%		-0.35%
	Dollar Amount Increase / (Decrease)	(10,125)	1,777,336		(6,142)
	Total Net	(60)	-	(6,960)	-
	Percentage Increase / (Decrease)	0	-100.00%		0.00%
	Dollar Amount Increase / (Decrease)	(60)	181		-

Beverage Recycling
Fund 081 Department 4200

<u>Revenue</u>	<u>Description</u>	<u>Three Year Average</u>	<u>Adopted Budget FYE 2017</u>	<u>Actual FYE 2017 Thru 03/2016</u>	<u>Proposed Budget FY 2017-2018</u>
3801	Grant Income	5,000	5,000	-	5,000
	Total Revenue	5,000	5,000	-	5,000
	Percentage Increase / (Decrease)		0.00%	0.00%	0.00%
	Dollar Amount Increase / (Decrease)		-	(5,000)	-

<u>Expense Code</u>	<u>Description</u>	<u>Three Year Average</u>	<u>Adopted Budget FYE 2017</u>	<u>Actual FYE 2017 Thru 03/2016</u>	<u>Proposed Budget FY 2017-2018</u>
2008	Janitorial Supplies	-	5,000	-	5,000
	Total Expenses	1,920	5,000	-	5,000
	Percentage Increase / (Decrease)		61.60%	0.00%	0.00%
	Dollar Amount Increase / (Decrease)		3,080	(5,000)	-
	Total Salaries & Expenses	1,920	5,000	-	5,000
	Percentage Increase / (Decrease)		61.60%	0.00%	0.00%
	Dollar Amount Increase / (Decrease)		3,080	(5,000)	-
	Total Net	3,080	-	-	-
	Percentage Increase / (Decrease)		0.00%	0.00%	0.00%
	Dollar Amount Increase / (Decrease)		(3,080)	-	-

Waste Water Treatment Plant Improvements
Fund 110 Department 4013

<u>Revenue</u>	<u>Description</u>	<u>Three Year Average</u>	<u>Adopted Budget FYE 2017</u>	<u>Actual FYE 2017 Thru 04/2017</u>	<u>Proposed Budget FY 2017-2018</u>
3801	Grant Income	-	380,000	47,190	250,000
	Total Revenue	-	380,000	47,190	250,000
	Percentage Increase / (Decrease)				-34.21%
	Dollar Amount Increase / (Decrease)				(130,000)

<u>Expense Code</u>	<u>Description</u>	<u>Three Year Average</u>	<u>Adopted Budget FYE 2017</u>	<u>Actual FYE 2017 Thru 04/2017</u>	<u>Proposed Budget FY 2017-2018</u>
4102	Preliminary Engineering	-	380,000.00	109,802.50	250,000
	Total Expenses	-	380,000	109,803	250,000
	Percentage Increase / (Decrease)				-34.21%
	Dollar Amount Increase / (Decrease)				(130,000)

	Total Salaries & Expenses	-	380,000	109,803	250,000
	Percentage Increase / (Decrease)				-34.21%
	Dollar Amount Increase / (Decrease)				(130,000)

	Total Net	-	-	(62,613)	-
	Percentage Increase / (Decrease)				0.00%
	Dollar Amount Increase / (Decrease)				-

<u>Revenue</u>	<u>Description</u>	<u>Three Year Average</u>	<u>Adopted Budget FYE 2017</u>	<u>Actual FYE 2017 Thru 04/2017</u>	<u>Proposed Budget FY 2017-2018</u>
3801	Grant Income	-	-	-	64,000
	Total Revenue	-			64,000
	Percentage Increase / (Decrease)				0.00%
	Dollar Amount Increase / (Decrease)				64,000

<u>Expense Code</u>	<u>Description</u>	<u>Three Year Average</u>	<u>Adopted Budget FYE 2017</u>	<u>Actual FYE 2017 Thru 04/2017</u>	<u>Proposed Budget FY 2017-2018</u>
4102	Preliminary Engineering	-			64,000
	Total Expenses	-	-	-	64,000
	Percentage Increase / (Decrease)				0.00%
	Dollar Amount Increase / (Decrease)				64,000
	Total Salaries & Expenses	-	-	-	64,000
	Percentage Increase / (Decrease)				0.00%
	Dollar Amount Increase / (Decrease)				64,000
	Total Net	-	-	-	-
	Percentage Increase / (Decrease)				0.00%
	Dollar Amount Increase / (Decrease)				-