

MEETING AGENDA

The City Council/Successor Agency of the City of Firebaugh

Vol. No.16/04-18

Location of Meeting: Andrew Firebaugh Community Center
1655 13th Street, Firebaugh, CA 93622
Date/Time: April 18, 2016/6:00 p.m.

CALL TO ORDER

ROLL CALL
Mayor Freddy Valdez
Mayor Pro Tem Brady Jenkins
Council Member Craig Knight
Council Member Marcia Sablan
Council Member Felipe Perez

In compliance with the Americans with Disabilities Act, if you need special assistance to access the Andrew Firebaugh Community Center to participate at this meeting, please contact the Deputy City Clerk at (559) 659-2043. Notification 48 hours prior to the meeting will enable the City to make reasonable arrangements to ensure accessibility to the Andrew Firebaugh Community Center.

Any writing or documents provided to a majority of the City Council regarding any item on this agenda will be made available for public inspection at City Hall, in the Deputy City Clerk's office, during normal business hours.

PLEDGE OF ALLEGIANCE

PUBLIC COMMENT

PRESENTATION

- Power Point Presentation from City Planner Karl Schoettler regarding the Bicycle transportation plan.

CONSENT CALENDAR

Items listed on the calendar are considered routine and are acted upon by one motion unless any Council member requests separate action. Typical items include minutes, claims, adoption of ordinances previously introduced and discussed, execution of agreements and other similar items.

1. **APPROVAL OF MINUTES – The City Council meeting on April 4, 2016.**
2. **WARRANT REGISTER – Period starting March 1, and ending on March 31, 2016.**

March 2016	General Warrants	#33241 - #33357	\$ 571,056.77
	Payroll Warrants	#66661 - #66807	\$ 462,873.03
TOTAL			\$ 1,033,929.80

PUBLIC HEARING

3. **RESOLUTION NO. 16-11 - A RESOLUTION OF THE CITY COUNCIL OF THE CITY OF FIREBAUGH TO CONSIDER AND POSSIBLE APPROVAL OF GENERAL PLAN AMENDMENT 2016-01 (THE 2016 HOUSING ELEMENT) AND ADOPTING A NEGATIVE DECLARATION.**

Recommended Action: City Council receives comments and approves Res. No. 16-11.

NEW BUSINESS

4. RESOLUTION NO. 16-10 - A RESOLUTION OF THE CITY COUNCIL OF THE CITY OF FIREBAUGH TO CONSIDER AND POSSIBLE APPROVAL OF THE DESIGNATION OF PERSONS ON SIGNATURE CARDS OF THE FINANCIAL INSTITUTIONS USED BY THE CITY WHICH AUTHORIZE SIGNATURE OF CITY WARRANTS & PAYROLL CHECKS.

Recommended Action: City Council receives comments and approves Res. No. 16-10.

5. THE CITY COUNCIL OF THE CITY OF FIREBAUGH TO CONSIDER AND POSSIBLE APPROVAL OF RFP AWARD OF THE FARM LEASE AGREEMENT (APN 007-100-22, 007-100-26 & 007-100-25) TO ECHEVESTE SHEEP COMPANY.

Recommended Action: Council receive public comments and awards RFP.

6. THE CITY COUNCIL OF THE CITY OF FIREBAUGH TO CONSIDER AND POSSIBLE APPROVAL OF AGREEMENT FOR TRANSFER OF ENTITLEMENTS FOR THE AIRPORT WITH THE U.S. DEPT. OF TRANSPORTATION – FEDERAL AVIATION ADMINISTRATION.

Recommended Action: Council receive public comments, Informational Item only.

7. THE CITY COUNCIL OF THE CITY OF FIREBAUGH REVIEWING THE PRELIMINARY FY 2016/17 GENERAL FUND BUDGET.

Recommended Action: Council receive public comments, Informational Item only.

CLOSED SESSION

ANNOUNCEMENT AFTER CLOSED SESSION

ADJOURNMENT

Certification of posting the Agenda

I declare under penalty of perjury that I am employed by the City of Firebaugh and that I posted this agenda on the bulletin boards at City Hall, April 14, 2016 at 5:00 p.m. by Rita Lozano Deputy City Clerk.



City of Firebaugh Bicycle Transportation Plan



Prepared as a Component of the Fresno Council of Governments
Circuit Planner /Project Liaison Program

Report Prepared by
Bruce O'Neal
Holly Owen

Land Use Associates

April 2016

Table of Contents

CONTENTS

1.1 INTRODUCTION	1
1.2 SETTING AND PROJECT AREA	1
1.3 BICYCLE FACILITIES	3
1.4 BICYCLE TRANSPORTATION PLAN GOALS AND POLICIES	6
1.5 COMPLIANCE WITH SECTION 891.2 OF THE STREETS AND HIGHWAYS CODE	8
1.6 FUNDING BICYCLE TRANSPORTATION PLAN IMPROVEMENTS	19
1.7 IMPLEMENTATION	20

MAPS

1 REGIONAL LOCATION	2
2. GENERAL PLAN LAND USE/CIRCULATION MAP	AFTER PAGE 9
3. BIKE PLAN MAP	AFTER PAGE 9

1.1 INTRODUCTION



According to the California Streets and Highways Code, Sections 890 through 894.2, local agencies must complete a Bicycle Transportation Plan (BTP) to qualify for grant funds issued by Caltrans through the Bicycle Transportation Account (BTA). Conforming plans must be no more than five years old. To maintain eligibility for BTA funding, the City should update the BTP on a five-year cycle. The BTP establishes goals, policies, implementation actions and priorities for the development of bicycle facilities in the Firebaugh as envisioned by the Firebaugh General Plan.

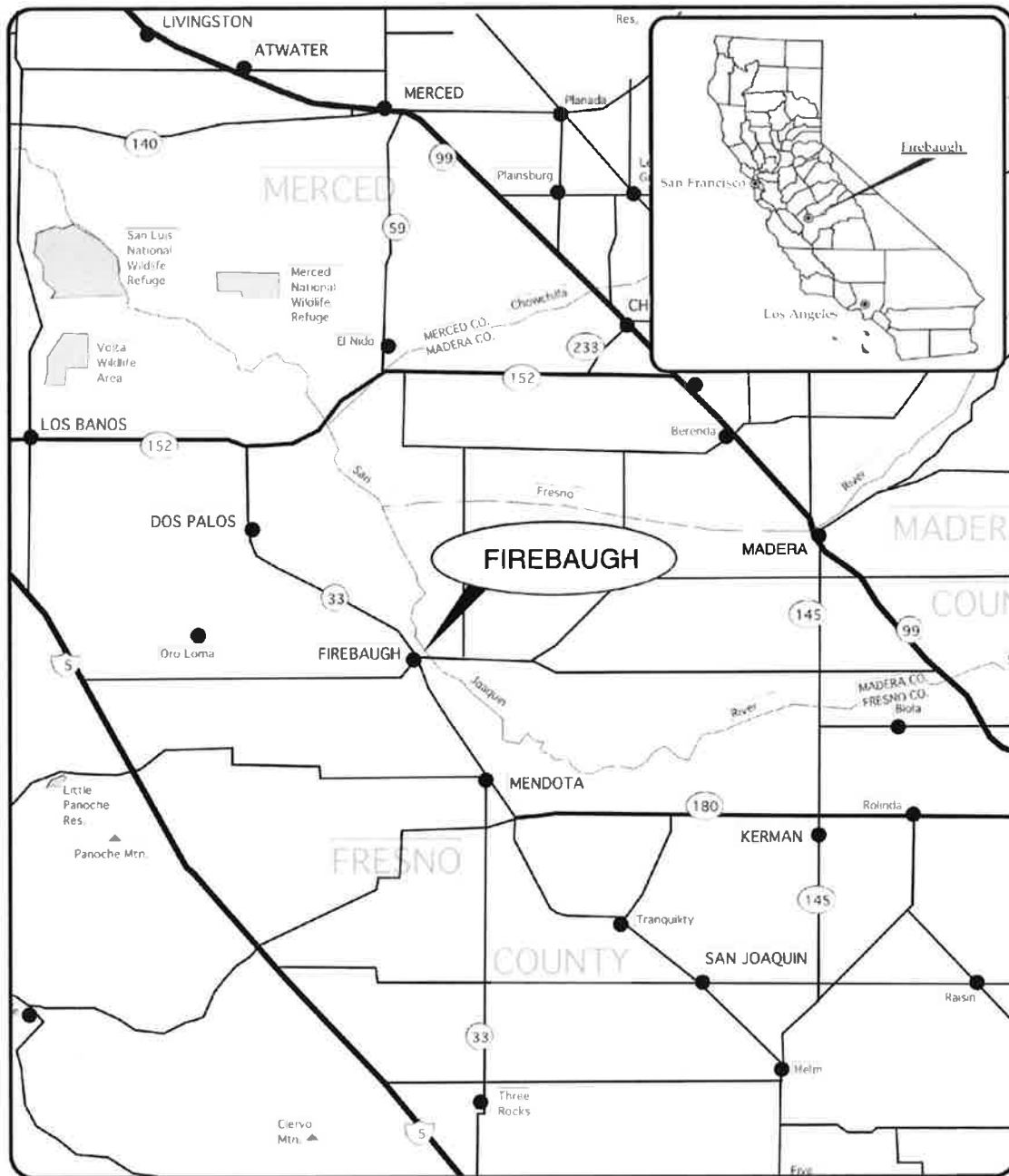
The BTP will improve funding for bicycle improvements in Firebaugh. In addition to BTA requirements, Fresno County's Measure "C" half-cent sales tax extension approved in 2006 has allocated nearly \$55 million countywide for bicycle infrastructure between 2007 and 2027. Measure "C" requires that jurisdictions have an adopted Transportation plan for pedestrian/trail facilities (including Class I bike paths) to receive funding for bicycle infrastructure.

1.2 SETTING AND PROJECT AREA

Firebaugh is one of 15 cities located in Fresno County and situated in the midst of California's agriculturally rich San Joaquin Valley (see Map 1). This small community is located northwest of Fresno on Highway 33. Incorporated in 1914, Firebaugh has grown from a ferry crossing to a small agriculture based city. Before the railroad, the San Joaquin River was the major thoroughfare to serve upstream communities. The ferry, located in Firebaugh, was a major area crossing for prospectors heading for the gold country.

Ferries were the only way to cross the river until the late 1800s when the first bridges were built. The San Joaquin River played a major role in the settling of the valley and Firebaugh is one of the oldest historical towns on the Westside.

The BTP applies to Firebaugh's incorporated area and also outlines planned bicycle facilities in the City's Sphere of Influence with interconnection to regional facilities planned by Fresno County. Formal bike paths and pedestrian trails in Firebaugh are limited to the existing three-quarter mile long trail along the San Joaquin River, north and south of the 13th Street Bridge. This trail also has an on-street spur that runs along the south side of 9th Street between Q Street (adjacent to the river) and O Street (to the plaza at West Hills College).



CITY OF FIREBAUGH

Regional
Location

map
1

1.3 BICYCLE FACILITIES

Chapter 1000 of the Caltrans *Highway Design Manual* identifies three types of bikeways:



Typical Class I Bike Path. The path is separate from the street

Class I - Bike Paths provide a separated right-of-way for the exclusive use of bicycles and pedestrians. These facilities can also be used as multi-use trails. Amenities on Class I bike paths include lighting, directional signage, and benches. Water fountains and restrooms may also be included. In addition to continuous separation from traffic, key components to a successful bike path include:

- Scenic qualities
- Connection to activity centers
- Street crossings with measures such as median islands and warning signs
- Proper maintenance

The typical width standard for a Class I facility is 12 feet – six feet for each travel direction. The minimum allowable width for Class I paths according to the Caltrans Highway Design Manual is eight feet. If funded by Measure “C,” Class I paths must be twelve feet wide. The implementation of Class I bike paths along irrigation canals requires coordination with the canal owner and/or operator; in many cases a joint use agreement will be necessary. Additionally, bike paths adjacent to canals should be designed to address safety concerns.



Typical Class II Bike Lane. The lane is on the street with painted stripes and signs.

Class II - Bike Lanes are areas within paved streets, generally on the road shoulder, identified with striping, stencils, and signs for preferential bicycle use. Bicycle lanes are one-way facilities typically paired on opposite sides of the street to facilitate two-way travel. Bicycle lanes separate cyclists from traffic by striping, allowing cyclists to travel within their own lane.



In urban settings, lanes are often placed within the road right of way and separated by barriers from traffic in order to create bicycle commute lanes.



Class III - Bike Routes are shared right-of-way with vehicles, signed as a bike route. They are typically intended to provide continuity to a larger bike system network and street parking is often either removed or restricted to reflect this usage. The designation of a bike route is intended to indicate that a higher degree of service is specified for that roadway, whether it is maintenance, adjustment of traffic control devices to accommodate bicyclists, or parking restriction.

Retrofitting Existing Roadways. Retrofitting existing streets and roadways may be necessary to accommodate bicyclists. The following guidelines will be considered when determining which portions of a roadway may be modified.



Reconsider Need for Parking. As appropriate, the City will evaluate the need for on-street parking. In areas with low parking demand, parking and bicycle lanes may be combined, yet still accommodate parking needs of nearby residences and businesses.



These before and after photos show how an existing street that had dangerous and high traffic speeds was safely reconfigured with bike lanes and cross walks.

Traffic Speed and Lane Widths. In areas where speed zones are less than 35-miles per hour, narrower travel lanes and/or center turn lanes may be appropriate. These narrower lane widths could provide more space on a street for bicycle lanes without the need for widening.



A four lane road was reconfigured to provide a continuous left turn lane, freeing up room for bike lanes on the margins.

Number of Lanes and Lane Widths. In areas with four traffic lanes and a significant number of left-turn movements, re-striping for a continuous left-turn lane, two travel lanes and two bike lanes may be considered. Re-striping will also depend on traffic volumes.

1.4 BICYCLE TRANSPORTATION PLAN GOALS AND POLICIES

The Firebaugh 2030 General Plan addresses bicycling and walking as important forms of transportation. In a small community like Firebaugh, bicycling or walking can provide a realistic way to make trips around the community. For example, the downtown is easily reached by a relatively short bicycle ride, and by walking for many neighborhoods. When added to the local bike and pedestrian traffic generated by school-aged children, it is important to properly locate and design Firebaugh's bike path and trail system.

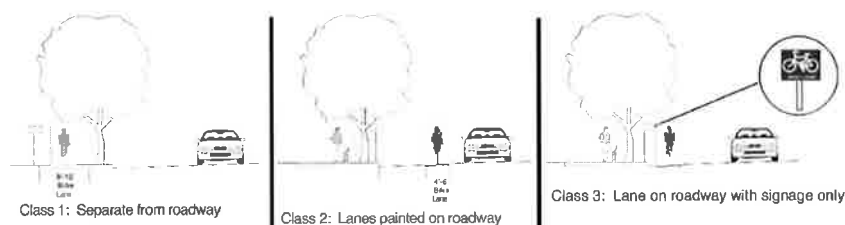
Firebaugh also has the advantage of having the San Joaquin River along the east side of the City which presents the opportunity to create a pathway for use by pedestrians and bicyclists. The City has already constructed the first portion of a pathway along the river. Extending this pathway is of critical importance. Finally, the numerous irrigation canals that traverse the City provide an opportunity for the installation of multi-purpose trails along canal banks.

The Firebaugh General Plan Circulation Element contains the following goals and objectives with regard to bicycling.

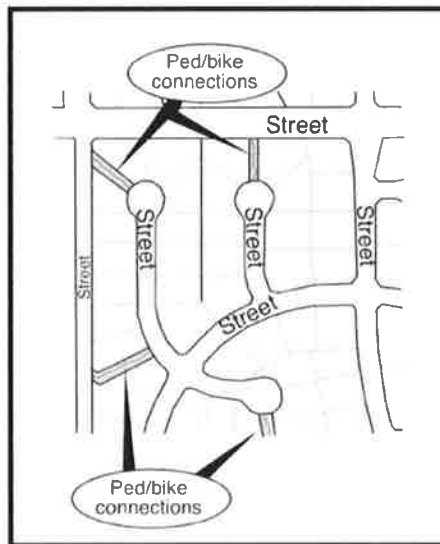
Goals, Objectives, Action Plans

1. Encourage residents to walk and ride bikes for good health as well as for environmental reasons.

- A. Develop a trail and bike path plan for the City of Firebaugh.
 - 1) The Circulation Element map designates bike routes and pedestrian trails in the planning area.
 - 2) Require new development to install bike and pedestrian pathways designated on the Circulation Element Map, where the development abuts the route of the pathway. For other portions of pathways, apply for state and federal funds to finance the construction of the pathway system.
 - 3) Bike paths will be constructed consistent with the bike path cross-section illustrated below.



- 4) Provide signage for walking and bicycling paths.
2. **Work with the County of Fresno to ensure that Firebaugh's trail and bike path plan is linked to the County's regional bikeway network.**
 - A. The City shall maintain contact with Fresno County to ensure consistency between City and County bike plans.
3. **Provide safe, attractive and convenient pedestrian access to all areas of the City, including between neighborhoods.**
 - A. Require new subdivisions to include pedestrian "paseos" at cul-de-sacs and elbows. This shall be incorporated into the Design Guidelines specified by the General Plan.

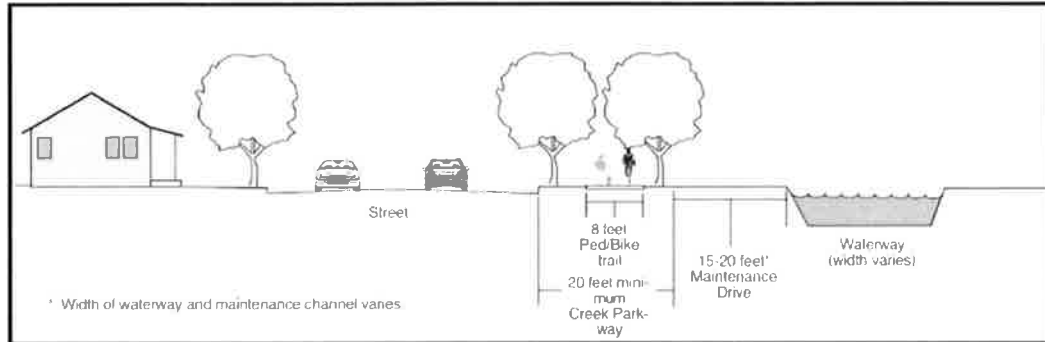


A subdivision designed with pedestrian connections from cul-de-sacs to adjoining streets makes walking and cycling connections easier.

- B. Maintain and repair sidewalks to make them safe for pedestrians.
- C. Plant existing parkways that lack trees to make the walking experience more enjoyable.

4. Investigate the use of canal easements for walking paths.

- A. Work with Central California Irrigation District and the Planning Commission to devise a Waterway and Trails Transportation Plan. Until adopted, the City should use the design shown below as a guide for developing open space/trails along canals.



1.5 COMPLIANCE WITH SECTION 891.2 OF THE STREETS AND HIGHWAYS CODE

In order to be eligible for funding from the State Bicycle Transportation Account (BTA), a local agency must include within its Bicycle Transportation Plan a discussion of the eleven separate elements listed in Section 891.2 of the Streets and Highways Code. The local agency governing board must adopt the Bicycle Transportation Plan or certify that it has been updated and complies with State law and the Regional Transportation Plan. Furthermore, the Bicycle Transportation Plan must be submitted to the Council of Fresno County Governments for review and certification that it complies with Section 891.2 and the Fresno County Regional Transportation Plan.

The following section addresses the eleven required elements as listed in Section 891.2 of the California Streets and Highways Code. Section 891.2 states: *A city or county may prepare a bicycle transportation plan, which shall include, but not be limited to, the following elements:*

- (a) ***The estimated number of existing bicycle commuters in the plan area and the estimated increase in the number of bicycle commuters resulting from implementation of the plan.***

RESPONSE: According to the most recent California Department of Finance information, the population of Firebaugh on January 1, 2015 was 7,779. The built-up area covers approximately 2.9 square miles, most of which is flat. Combined with a semi-arid climate, the City's topography makes it a candidate for more than the average number of bicycle riders. This is particularly true for trips to school and to centrally located commercial and employment enterprises.

A verifiable estimate of the number of bicycle commuters in Firebaugh is not available because no formal survey has been conducted. Fresno County, in conjunction with creating their Regional Bicycle Master Plan, conservatively estimated the number of bicycle commuters at 0.5% of the population over 16 years of age (students commuting to school would not be included in this estimate). With that as a guideline, Firebaugh would have 15 commuter bicyclists per day for a population of 2,911 residents aged 16 and older. It is a modest



expectation that the implementation of this plan would increase the number of commuting bicycle riders from 0.5% (15) to 2% (58) with the provision of more adequate and identifiable bikeways, not including students or bicyclists with other destinations in mind.

(b) A map and description of existing and proposed land use and settlement patterns which shall include, but not be limited to, locations of residential neighborhoods, schools, shopping centers, public buildings, and major employment centers.

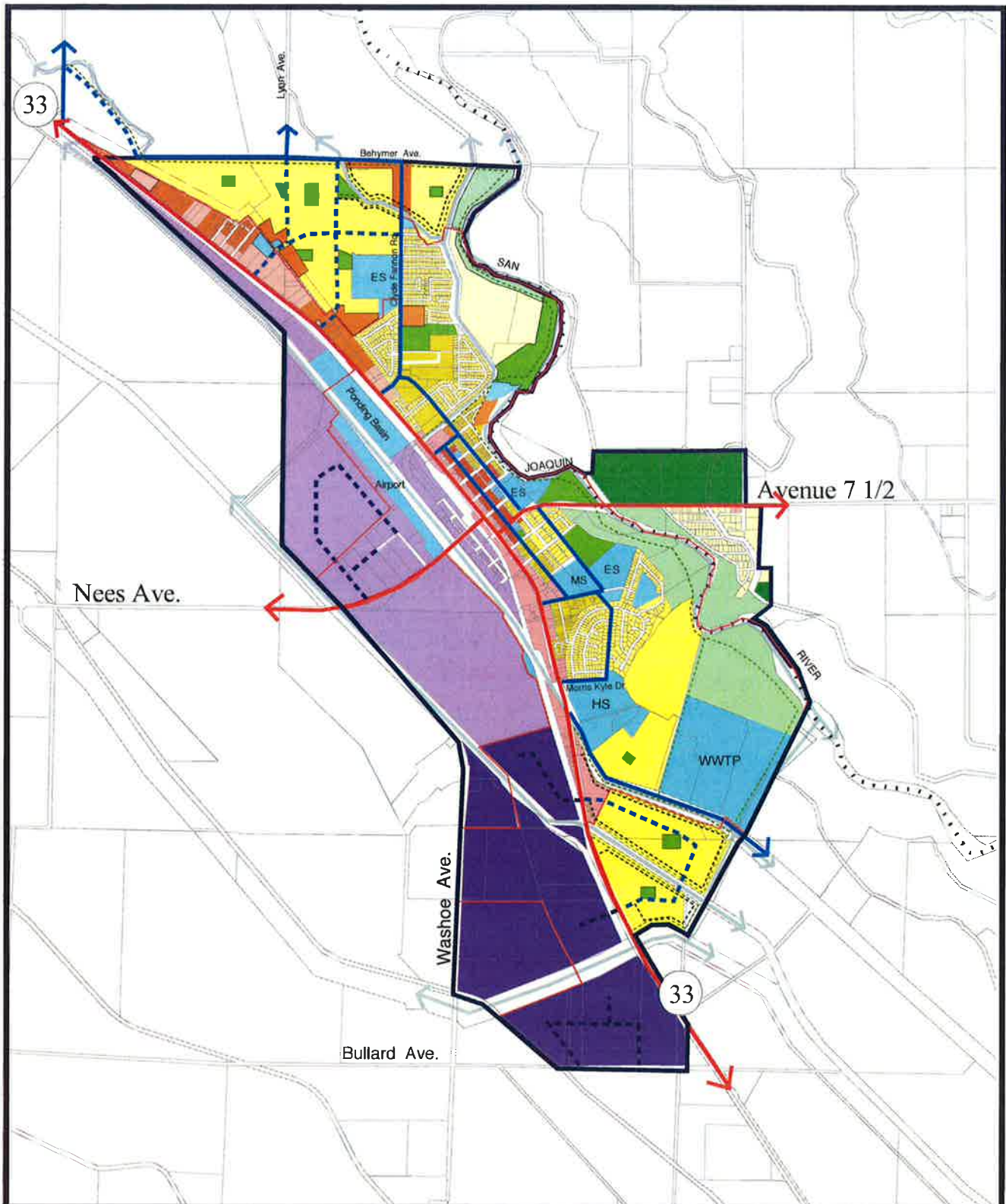
RESPONSE: The General Plan land use map of Firebaugh is included as Map 2. Generally, commercial activities are located in the central commercial district. Single-family residential land uses are located to the northwest and southeast while multi-family residential land uses are located mainly to the north along both sides of Clyde Fannon Road and to the northeast along Highway 33. Industrial areas are located to the west of Highway 33.

The high school is located alongside Helm Canal road, southwest of Lake Joallan, while other schools, including middle and elementary schools, are located east of O Street. A future elementary school is planned in the northern quadrant of the city, west of Clyde Fannon Road.

Other land uses within the community that generate bicycle trips include West Hills Community College (9th and O Streets), Maldonado Park (Clyde Fannon Road) and Firebaugh Branch Library (13th and O Streets). With the provision of more adequate and identifiable bikeways, the number of bicycle trips to and from these different land uses can be expected to increase substantially.

(c) A map and description of existing and proposed bikeways.

RESPONSE: A map showing bikeways superimposed on the existing street network is included as Map 3. The map provides for the three classes of bikeway facilities: Class I facilities (paths) are identified generally following the waterways (San Joaquin River, Helm, Main and Outside Canals) as well as east and west along Behymer Avenue. Class II facilities (lanes) are located along Highway 33 as well as Clyde Fannon Road, with east and west routes along Nees and 7^{1/2}



2030 Firebaugh General Plan - Proposed Land Use Map with Circulation and Open Space Features

- Low Density Residential
- Medium Density Residential
- High Density Residential
- Neighborhood Commercial
- Central Commercial
- Service Commercial
- Light Industrial
- Heavy Industrial
- Public/Quasi Public
- Park/Recreation
- Open Space
- Agriculture

- Existing Future
- Arterial Streets
- Collector Streets
- Industrial Streets
- Local Streets
- Pedestrian Trails
- Waterways



City Limits
Sphere of Influence
County Boundary

City of Firebaugh

Map 1

1000 0 1000 Feet

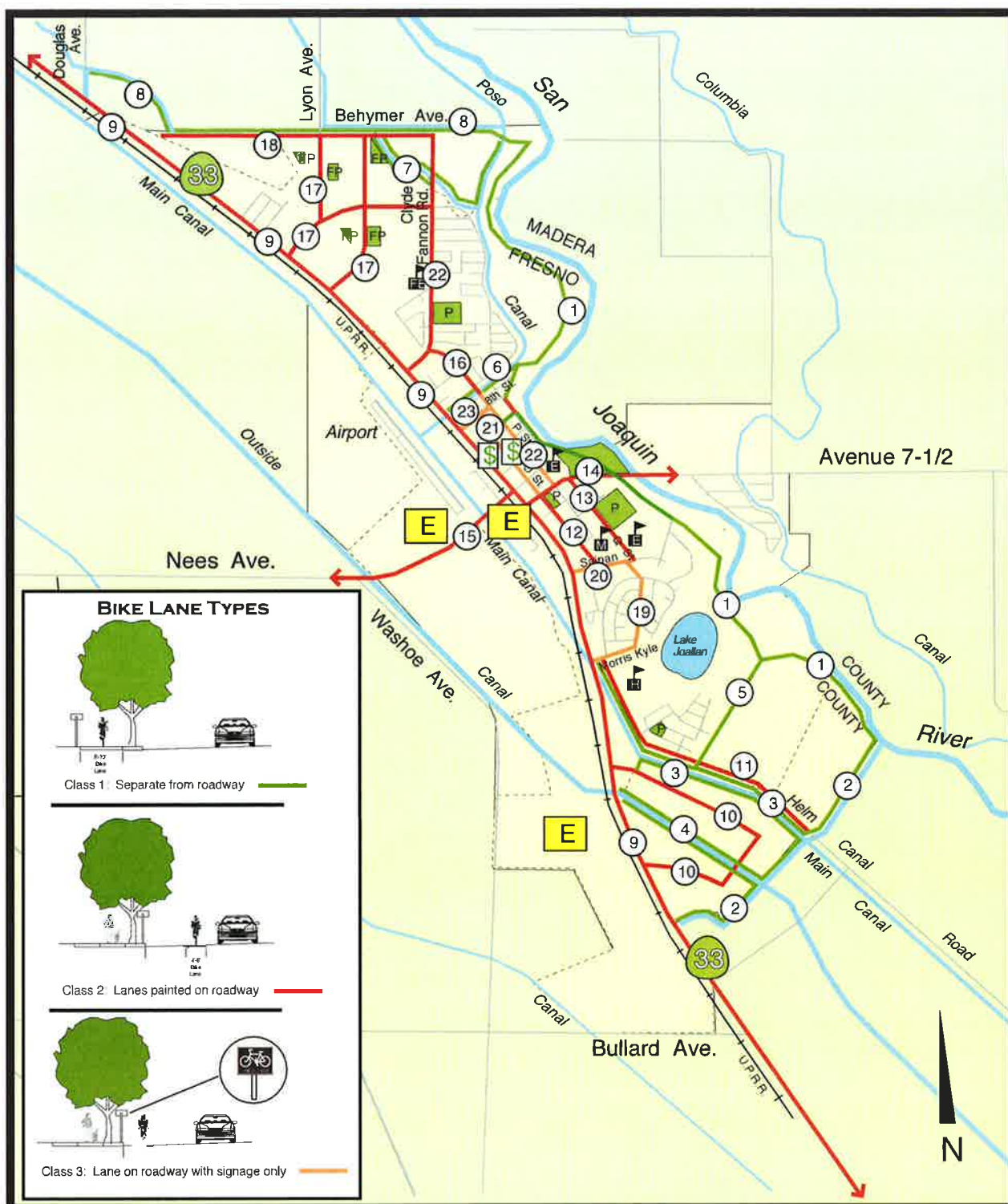


Collins & Schuetzler

PLANNING CONSULTANTS

14750 W. 1st Street, Suite 100, Chino, CA 91708

Map 1, prepared by Collins & Schuetzler, dated 1/1/2010, at 11:00 AM, for the City of Firebaugh.



Proposed Bike Path System

Bike Lane Type

Class I

Class II

Class III

Waterways

Class I

Class II

Class III

Waterways

Bike paths/lanes are numbered to correspond to list in Firebaugh Bicycle Transportation Plan



School / Future School

E = Elementary

M = Middle

H = High



Shopping Areas



Planning Area



Major employment centers



City limit boundary



Park / Future Park

Map 3

City of Firebaugh

Collins & Schoettler
PLANNING CONSULTANTS

Avenues, respectively. Class III facilities (routes) are mainly located in the downtown commercial area, along 8th, O and P Streets, as well as on Saipan Avenue to Landucci Drive, past Firebaugh High School.

- (d) A map and description of existing and proposed end-of-trip bicycle parking facilities. These shall include, but not be limited to, parking at schools, shopping centers, public buildings, and major employment centers.**

RESPONSE: Bicycle parking racks can be provided at the library, central commercial district, West Hills Community college, Firebaugh High School and the major parks. There are no current plans to provide additional facilities.

- (e) A map and description of existing and proposed bicycle transport and parking facilities for connections with and use of other transportation modes. These shall include, but not be limited to, parking facilities at transit stops, rail and transit terminals, ferry docks and landings, park and ride lots, and provisions for transporting bicyclists and bicycles on transit or rail vehicles or ferry vessels.**

RESPONSE: Firebaugh is served by Fresno County Rural Inter-City transit (FCRTA). Demand responsive service is available in the Firebaugh community from 7:00 a.m. to 5:30 p.m., Monday through Friday. Scheduled, multiple round trip, intercity service is available to the Fresno-Clovis Metropolitan Area through Mendota and Kerman between the hours of 7:00 a.m. to 5:30 p.m., Monday through Friday on Westside Transit. Intercity FCRTA buses are equipped with bike racks; instructions on how to use the bike racks are on their website in English and in Spanish. There are no rail terminals, transit stations, or designated park and ride lots in Firebaugh.



- (f) A map and description of existing and proposed facilities for changing and storing clothes and equipment. These shall include, but not be limited to, locker, restroom, and shower facilities near parking facilities.**

RESPONSE: There are no such facilities at present. It is recommended that a zoning ordinance amendment or update include a requirement for facilities to be provided at major commercial and industrial sites.

- (g) A description of bicycle safety and education programs conducted in the area included within the plan, efforts by the law enforcement agency having primary traffic law enforcement responsibility in the area to enforce provisions of the Vehicle Code**

pertaining to bicycle operation, and the resulting effect on accidents involving bicyclists.

RESPONSE: The Firebaugh Police Department sponsors an annual “bicycle rodeo” where information on bicycle safety is shared. The target audience is primarily school age children, but adults also participate. There is no data to quantify effects of this program on accident rates, but the Police Department feels strongly that the education effort has had a positive effect in the community.

The City of Firebaugh supports the education and enforcement policies of the 2014 Regional Transportation Plan listed on page 3-10 of the Plan and excerpted below.

GOAL: IMPROVED BICYCLE SAFETY THROUGH EDUCATION AND ENFORCEMENT

Policies:

- *Support the development and promotion of an education plan and program that increases awareness of the rights and behavior of bicyclists within the traffic environment.*
- *Support enforcement of traffic laws related to cyclist behavior and cyclist/motorist conflicts.*
- *Disseminate information to member agencies, school districts, and other appropriate agencies and organizations on model programs to increase bicycle helmet use and bicycle safety.*

(h) *A description of the extent of citizen and community involvement in development of the plan, including, but not limited to, letters of support.*

RESPONSE: During the annual “bicycle rodeo” event sponsored by the Firebaugh Police Department on August 4, 2015, the City’s consultant conducted a public outreach effort. Part of that outreach was to engage the public and to solicit opinions and concerns about the bicycling experience in Firebaugh. Thirty-seven surveys, offered in Spanish and English, were completed.

The survey elicited responses to seven questions relating to “How bikeable is your community?” The first five questions dealt with specific issues and asked the respondent to rate the issue on a scale of 1 to 6. The last 2 questions asked about personal bicycle use. These questions and a summary of responses are as follows:



1. *Did you have a place to bicycle safely?*

Almost all respondents stated there were some problems on the road, primarily limited space to ride, poorly lit roadways, and heavy or fast moving traffic. The overall rating for this question was “3” on a scale of 1 to 6.

2. *How was the surface that you rode on?*

The most common complaints were cracked or broken pavement and potholes. The overall rating for this question was “2” on a scale of 1 to 6.

3. *How were the intersections you rode through?*

The majority of respondents felt there were some problems related to intersections, primarily being unsure of how to ride through the intersection. The overall rating for this question was “4” on a scale of 1 to 6.

4. *Did drivers behave well?*

This question was closely tied to question No. 1, above. Bicyclists who thought there was too much traffic on roadways also listed drivers who drove too fast or cut off the rider as a concern. The overall rating for this question, however, was “4” on a scale of 1 to 6.

5. *Was it easy for you to use your bike?*

Given that the majority of respondents were school-aged children, most had some difficulty riding their bikes, including the lack of signs or road markings, no bike lanes, threatening dogs, and no bike racks at the destination. The overall rating for this question was “3” on a scale of 1 to 6.

6. *What did you do to make your ride easier?*

The respondents listed several behaviors that increase bicycle safety, including wearing a helmet, reflective materials and bright clothing, obeying traffic laws, and being courteous to others.

7. *Tell us a little about yourself?*

The typical respondent was a beginning or intermediate rider who rode their bike 5-10 days per month in good weather.

The cumulative score for questions 1-5 was 16 points. According to the survey, this indicates that, “Conditions for riding are okay, but not ideal. There is plenty of opportunity for improvements.”

The Firebaugh Bicycle Transportation Plan was presented at a community workshop before the City's Planning Commission. Following the workshop, noticed public hearings were held on the Plan by the Planning Commission and the Firebaugh City Council to approve the Plan and authorize staff to transmit the Plan to the Fresno COG for review and subsequently to the Caltrans Bicycle Facilities Unit.

- (i) A description of how the bicycle transportation plan has been coordinated and is consistent with other local or regional transportation, air quality, or energy conservation plans, including, but not limited to, programs that provide incentives for bicycle commuting.**

RESPONSE: Development of the Bicycle Transportation Plan has been coordinated with Fresno County which adopted the Regional Bicycle and Recreational Trails Master Plan in February 2012. The Firebaugh Plan provides connectivity with the County's unincorporated system, including a Class I multi-purpose bikeway from Mendota to Firebaugh along the San Joaquin River, and a proposed Class II Rural Bikeway along Nees Avenue west of the City. The Firebaugh bikeway system has also been coordinated with the goals and policies in the 2014 Regional Transportation Plan. Improved bicycling facilities are also consistent with valley-wide programs to limit single-occupant motor vehicle travel. Specifically, transportation control measures contained in the Regional Transportation Plan and the California State Implementation Plan for Air Quality are supportive of bicycle and pedestrian modes and plans and programs. Further, the Firebaugh General Plan supports bicycle and pedestrian transportation.

- (j) A description of the projects proposed in the plan and a listing of their priorities for implementation.**

RESPONSE: The following section describes and prioritizes bicycle projects within Firebaugh. The projects were developed through a coordinated process that provided for public input and are consistent with the Regional Transportation Plan. Alignments marked with an asterisk will connect with the County of Fresno's planned bike path network.

Class I Bike Paths:

1. San Joaquin Trail extension south and north *
2. San Luis Drain (north side)
3. Helm Canal east of Hwy. 33 to San Luis Drain (both sides)
4. Outside Canal east of Hwy. 33 to San Luis Drain (both sides)
5. Lake Joallan south levee
6. Poso Canal (from P Street to San Joaquin River trail)
7. Silaxo Drain (from Clyde Fannon to Behymer Ave)
8. Behymer Avenue (north side, from San Joaquin River trail to Highway 33)

Class II Bike Lanes:

9. Highway 33*
10. Future streets east of Highway 33 parallel to Outside Canal
11. Helm Canal Road
12. O Street (Saipan to 13th Street)
13. Q Street (Saipan to 13th Street)
14. 13th Street (from Highway 33 to County line)
15. Nees Avenue (west of Highway 33)*
16. P Street (from Poso Canal to Clyde Fannon Road)
17. Future streets in El Sendero Ranch subdivision
18. Byhymer Avenue (south side)

Class III Bike Lanes

19. Morris Kyle Drive from Highway 33 to Saipan Street
20. Saipan from Highway 33 to Q Street
21. O Street from 13th Street to 8th Street
22. P Street from 13th Street to Poso Canal
23. 8th Stret from Highway 33 to P Street



The following projects are currently being pursued for funding:

1. Project Name/Number: Poso Canal Pedestrian /Bike Route – CML-5224(015)

Project Description and Location:

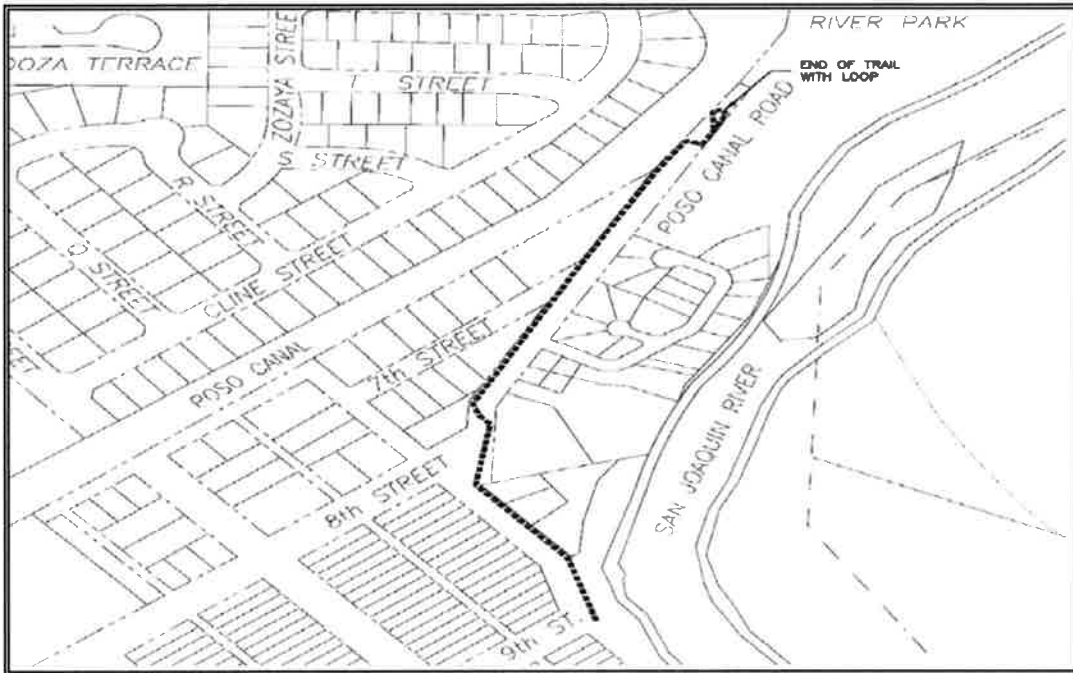
Construct a Pedestrian/Bike Route on Q Street along the Poso Canal bank from 9th Street to River Park. Project will consist of the construction of Class I shared use trail, ramps and other bike and pedestrian facilities.

Funding Source:

Funded with CMAQ Funding through Fresno COG

Estimated Starting and Completion Dates:

Project is currently in the design phase.
Construction is anticipated in 2016



Project Budget:

Design/Engineering	50,000
Right of Way/Acquisition	0
Construction Engineering/Management	42,000
Construction	238,000
Total	\$330,000

Capital Cost Estimate

Design/Engineering	50,000
Right of Way/Acquisition	0
Construction Engineering/Management	42,000
Construction	238,000
Total	\$330,000

2. Project Name/Number: CMAQ Dunkle Park, River Lane, 12th St Pedestrian Facilities – CML-5224(019)

Project Description and Location:

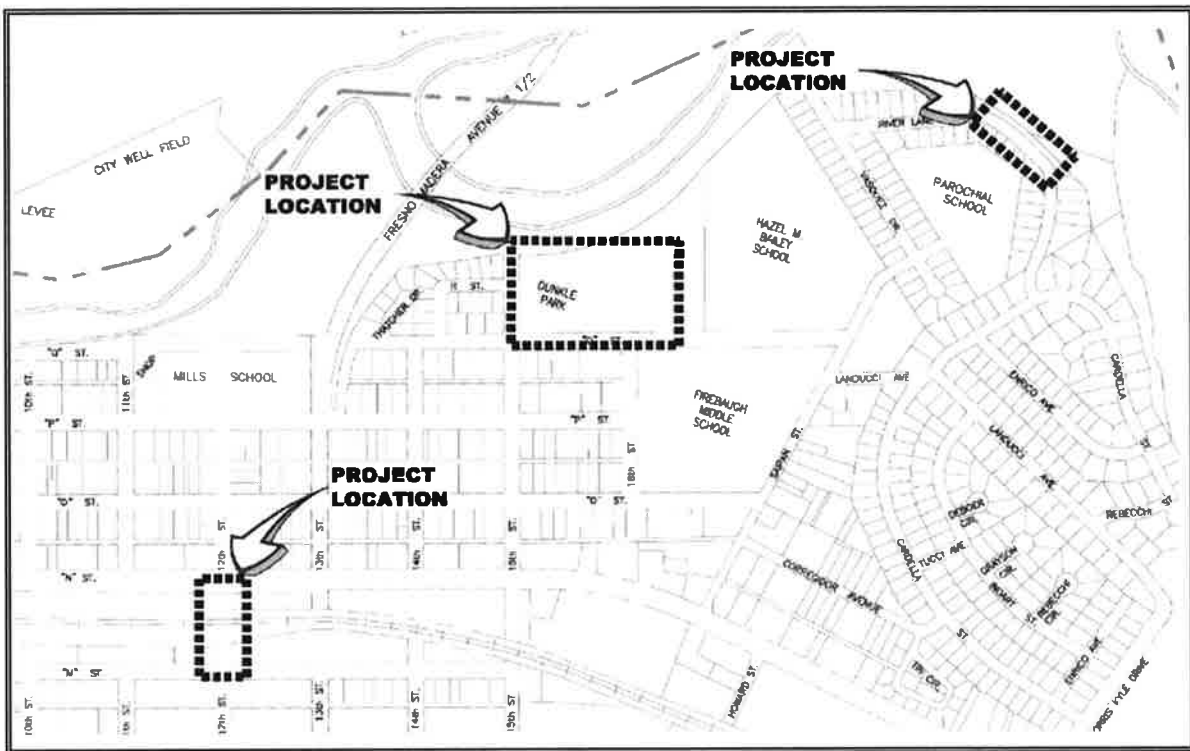
This project consists of the construction of pedestrian and bike facilities at 3 locations. Providing new access points to the City existing shared use trail.

Funding Source:

Funded with CMAQ Funding through Fresno COG

Estimated Starting and Completion Dates:

Project is currently in the design phase. Construction is anticipated in 2016.



Project Budget:

Design/Engineering
Right of Way/Acquisition
Construction Engineering/Management
Construction
Total

Capital Cost Estimate

21,945
0
41,146
233,167
\$ 296,258

3. **Project Name/Number:** Trail Rehabilitation and Pedestrian Improvements

Project Description and Location:

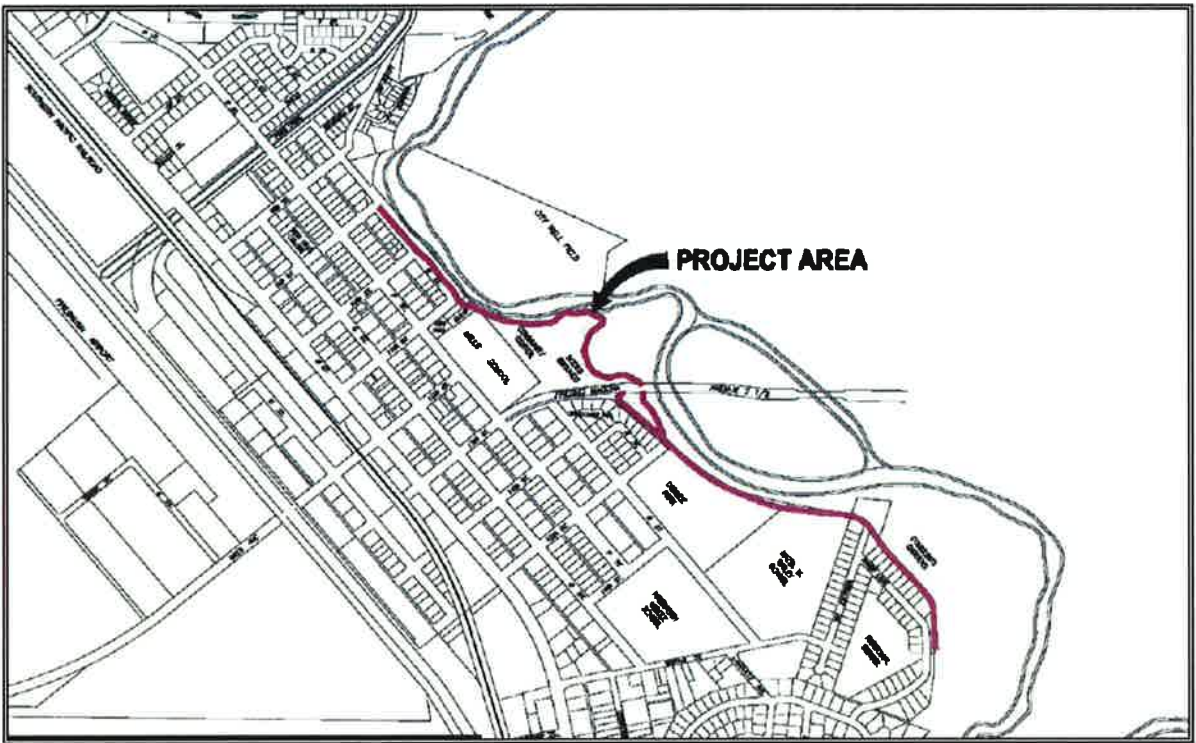
The project will rehabilitate the City's existing shared use AC trail (approx. 7000LF) along the San Joaquin River, install trail signs, and construct pedestrian facilities along the trail to extend the trail's longevity and draw new pedestrian/bike traffic.

Funding Source:

Funded with Regional ATP funds through Fresno COG

Estimated Starting and Completion Dates:

Funding programmed for FFY 16/17, 17/18, 18/19



Project Budget:

Design/Engineering/Environmental
Right of Way/Acquisition
Construction Engineering/Management
Construction
Total

Capital Cost Estimate

64,000
0
46,580
263,955
\$ 370,535

The prioritization of proposed bikeways was based on expected use, type of route, connectivity, and potential improvements to safety.

(k) A description of past expenditures for bicycle facilities and future financial needs for projects that improve safety and convenience for bicycle commuters in the plan area.

RESPONSE: Firebaugh has not provided bicycle facilities due to the need to allocate limited available funds for continued street and sidewalk maintenance and improvement. The completion of such facilities would promote bicycle safety and enhance convenience of travel. Additional financial support would enable the City to implement appropriate bicycle safety improvements. The City would substantially benefit from supplemental financial support to implement worthy bicycle facility improvements.

Estimated costs of development are:

<u>Facility</u>	<u>Estimated Development Cost Per Mile</u>
Class I Bike Paths	\$260,000 (assumes no land cost)
Class II Bike Lanes	\$19,000
Class III Bike Routes	\$5,200

Development of bicycle trails/paths includes design and construction of paving, landscaping, and irrigation improvements. No land costs are included, assuming that bike paths are constructed primarily on existing public right-of-way or will be negotiated with a public agency or private land owner. Costs per mile for bike lanes includes bicycle lane striping modifications, signage, stenciling, and detection loops at signalized intersections. Costs for Class 3 bike routes include signage and road shoulder rehabilitation.

Estimated facility maintenance costs are:

<u>Facility</u>	<u>Estimated Maintenance Cost Per Mile</u>
Class I Bike Paths	Landscaping \$5,000 per mile every 5 years Slurry seal \$15,000 per mile every 10 years
Class II Bike Lanes	Restriping \$315 per mile every 2 years \$200 per sign every 10 years
Class III Bike Routes	\$200 per sign every 10 years

The implementation of additional bicycle facilities in the City will require increased financial commitment to the maintenance of these facilities.

1.6 FUNDING BICYCLE TRANSPORTATION PLAN IMPROVEMENTS

The majority of public funds for bicycle projects are derived through a core group of local, state and federal programs.

- Federal funds from the Surface Transportation Program (STP), Transportation Enhancements (TE), and Congestion Mitigation Air Quality (CMAQ) programs are allocated to Fresno COG and distributed either competitively or proportionally according to population.
- Limited amounts of Local Transportation Funds (LTF), derived from a ¼ cent sales tax statewide, can be used for bicycle facilities.
- Safe Routes to School programs are potential funding sources for both bicycle and pedestrian planning. Caltrans administers two Safe Routes to School programs: the state-legislated program (SR2S) and the federal program (SRTS). Each program has unique differences that affect project selection.
- Bicycle facilities can be funded through the California Bicycle Transportation Account (BTA) administered by Caltrans (as described previously).
- The California State Parks Recreational Trails Program provides funds annually for trails-related projects. Cities are eligible for the program which requires an applicant match of 12 percent of the total project cost.
- Caltrans Transportation Planning Grants are available to jurisdictions and can be used for planning or feasibility studies. The maximum funding available per project is \$300,000.
- The Highway Safety Improvement Program (HSIP) is a federal-aid program administered by Caltrans to reduce fatalities and injuries on public roads. HSIP funds can be used for bike lanes on local roadways, improvements to Class I multi-use paths, or for traffic calming measures. Applications that identify a history of incidents and demonstrate safety improvement are most competitive for funding.
- Transportation Development Act Allocation funds are available for bicycle and pedestrian facility development and maintenance. Typically, these funds are set aside for capital projects and/or bicycle facility maintenance.



- Approximately 1% of Measure “C” is provided to fund significant improvements to the existing and planned bicycle facilities and/or systems. Such projects include Class II bicycle facilities, signage and striping, master plan preparation, and other program-related facilities and support facilities. The Measure “C” expenditure plan anticipated approximately \$55 million countywide by 2027 specifically for bicycle infrastructure. Because of the Great Recession’s impact on the local economy, however, it is likely that actual funding available through Measure “C” through 2027 will be less than projected.
- Private/local funding comes primarily from development projects, either in the form of improvements constructed directly by developers or through development fee programs.
- The HUD-DOT-EPA Interagency Partnership for Sustainable Communities has generated a series of new grant programs to-date, including Urban Circulator grants, TIGER grants, and Sustainable Communities Planning grants.

1.7 IMPLEMENTATION

The Firebaugh City Engineer, Public Works Director, and City Planner and the City’s grant consultant are responsible for implementing the Bicycle Transportation Plan. Various components of implementation include planning for the design, acquisition of right-of-way, and construction of proposed bicycle improvements. The Public Works Department is responsible for long-term maintenance of the completed bicycle facilities network.

The City Planner will continually monitor implementation of the Plan and its future revisions and updates. To be eligible for Bicycle Transportation Account (BTA) funding, conforming plans must be no more than five years old.

The City may modify projects and priorities as timing and opportunities arise. Feasible Class I, II, and III bikeways will continue to be developed throughout the community, as funding becomes available and development occurs. The City will continually assess the need, guidelines for development, and implementation strategies for such facilities. Additional engineering and environmental studies will be necessary to implement proposed projects.

The Caltrans Highway Design Manual Chapter 1000, *Bikeway Planning and Design*, establishes minimum criteria for planning and designing bikeways in California. By using the Highway Design Manual as a guide, the City has flexibility to carefully evaluate conditions, making modifications as appropriate, for each bicycle improvement. The City also adheres to current Americans with Disabilities Act requirements when designing and constructing its facilities.

To provide a safe and convenient bicycle paths and lanes, the City will consider and review the following:

- Acquisition of right-of-way
- Connectivity to existing paths and lanes (local and regional) and activity centers
- Mid-block crossings
- Vehicle parking on one or both sides of the street
- Narrowing existing travel lanes and/or sidewalks
- Restriping existing roadways
- Installation of continuous left turn lanes
- Widening the roadway
- Eliminating travel lanes (“Road Diet”)



MEETING MINUTES

The City Council/Successor Agency of the City of Firebaugh
Vol. No. 16/04-04

Location of Meeting: Andrew Firebaugh Community Center
1655 13th Street, Firebaugh, CA 93622
Date/Time: April 4, 2016/6:00 p.m.

CALL TO ORDER Meeting called to order by Mayor Valdez at 6:00 p.m.

ROLL CALL

PRESENT: Mayor Freddy Valdez
Mayor Pro Tem Brady Jenkins
Council Member Felipe Perez
Council Member Marcia Sablan

ABSENT: Council Member Craig Knight

OTHERS: City Attorney Roy Santos; Police Chief, Sal Raygoza; Acting City Manager/Public Works Director, Ben Gallegos; Deputy City Clerk, Rita Lozano; Finance Director, Pio Martin; Fire Chief, John Borboa, City Engineer, Mario Gouveia; and others.

PLEDGE OF ALLEGIANCE: Council Member Jenkins led pledge of Allegiance.

PUBLIC COMMENT

PRESENTATION

- *Swearing-In of Reserve Officer Maurice Rubio*
- *Nathan Perez/Nick Hasan of David Taussig & Associates presented an update on the Impact Fee Study.*
- *Power Point Presentation from City Planner Karl Schoettler regarding the Housing Element 2035.*

CONSENT CALENDAR

1. APPROVAL OF MINUTES – The City Council meeting on March 21, 2016.

Motion to approve minutes by Council Member Jenkins, Second by Council Member Sablan, motion passes by 4-0 vote.

NEW BUSINESS

2. THE CITY COUNCIL OF THE CITY OF FIREBAUGH TO DISCUSSION AND CONSIDER REDUCTION OR WAIVER OF PLANNING FEES FOR POSSIBLE DEVELOPMENT OF 1459 14th St (APN 008-132-17) AND 1388 "O" St (APN 008-132-16) FROM THE VASQUEZ FAMILY.

Motion to defer the remaining planning fess until two years after the applicant is issued an occupancy permit by Council Member Sablan, Second by Council Member Jenkins, motion passes by 4-0 vote.

3. **RESOLUTION NO. 16-08 - A RESOLUTION OF THE CITY COUNCIL OF THE CITY OF FIREBAUGH APPOINTING BEN GALLEGOS AS ACTING CITY MANAGER.**

Motion to approve Resolution No 16-08 by Council Member Jenkins, Second by Council Member Sablan, motion passes by 4-0 vote.

4. **RESOLUTION NO. 16-09 - A RESOLUTION OF THE CITY COUNCIL OF THE CITY OF FIREBAUGH SUPPORTING AB1012 - A STATE LAW TO SECURE THE EFFICIENCY OF TRANSPORTATION FUNDING AND IMPLEMENTING A TIMELY USE OF THE FEDERAL/STATE FUNDING UNDER THE FEDERAL SURFACE TRANSPORTATION ACT FOR THE FOLLOWING PROJECTS; 8TH STREET RECONSTRUCTION; "O" STREET RECONSTRUCTION.**

Motion to approve Resolution No 16-09 by Council Member Jenkins, Second by Council Member Sablan, motion passes by 4-0 vote.

5. **THE CITY COUNCIL OF THE CITY OF FIREBAUGH TO APPROVE A CLAIM REJECTION FOR GENERAL LIABILITY CLAIM OF MARITZA RODRIGUEZ.**

Motion to approve rejection of claim because the claim was not filed within the law required six-month deadline by Council Member Jenkins, Second by Council Member Perez, motion passes by 4-0 vote.

Motion to enter closed session by Council Member Jenkins, Second by Council Member Perez, motion passes by 4-0 vote at 7:07 p.m.

CLOSED SESSION

6. **Government Code Section 54957.**

PUBLIC EMPLOYEE EMPLOYMENT: City Attorney.

7. **Pending litigation Government Code Section 54956.9**

CONFERENCE WITH LEGAL COUNSEL – ANTICIPATED LITIGATION

Significant exposure to litigation pursuant to paragraph (2) or (3) of subdivision (d) of Section 54956.9: - one case.

Motion to enter open session, passes by 4-0 vote at 7:48 p.m.

ANNOUNCEMENT AFTER CLOSED SESSION:

Council approved a Settlement Agreement between the City of Firebaugh and Pacific Ag.

STAFF REPORTS

- **Public Works Director, Ben Gallegos** – Staff is waiting for the approval of the Sole Source request from the Department of Housing and Community Development regarding the 15-CDBG-10568. Council and Staff need to submit their needs and wants for the Finance Director to place in the Budget. Thanked Council for the opportunity to be the Acting City Manager. Explained the process of a stop work order (Red Tag), when building matter is reported, the building clerk is asked if a permit has been issued to the site/address. If a building permit has not been issued, a staff member issues a stop work order until the individual or contractor reports to the building department, for a building permit and a double fine will be charged. Only one bid was submitted for the Farm Lease Agreement, staff would present to council at the next meeting for approval. Mayor Valdez, thanked staff for resolving the issue.

- **Finance Director Martin** – Requested a wish list from staff/council to be considered and/or added to the budget. The General Fund will be presented at the next council meeting.
- **Fire Chief, John Borboa** – The Annual Fire Association Dinner Dance had about 230 attendees. The department is preparing for a busy fire season/summer and is hoping to be able to purchase a new fire truck.
- **City Attorney Santos** – Advised, all pending items are current, but is still working on the dissolution of the Westside Cable Authority. Sent a water reuse MOU contract to Acting City Manager/Public Works Director, Ben Gallegos for review and discussion.
- **Police Chief Raygoza** – Will negotiate a new contract with the Police Department of Mendota for dispatching services, there will be an increase required to cover the workload due to the high call volume of the services being provide to Mendota for dispatching services, to cover our costs. PAL Program started the Girls Softball League; sixty-eight girls are registered, they will play against other cities such as Chowchilla, Mendota and Kerman at their locations. When games are held in Firebaugh, they will be played at Maldonado Park. Once the Department of Housing and Community Development approves the city's sole source request for Grant Administration Services regarding the 15-CDBG-10568, Police Department will start assisting with code enforcement/dog catching services. To provide the services the department is looking in to hiring two individuals for a two-day workweek scheduled. Would prefer to have one of the days as a Saturday workday to catch the unissued building permits/construction being done on the weekends. Staff that attended code enforcement training classes will train these individuals or they themselves will attend. Finance Director Martin, stated part-time individuals must stay under 1000 hours worked per fiscal year for the city to avoid paying CalPERS contributions. Police Chief asked if the Promotes are still using the building at Dunkle Park for computer classes, if not, the festival committee would like to use the room to display historical photos of city during the Harvest Festival. Council Member Sablan suggested the committee also play the documentary of the city, "Jewel of the San Joaquin".
- **Council Member Perez** – Reported, "We are 501c, Promotes". Fresno State want to make a four-page newsletter for Firebaugh both in English and Spanish. Computer Classes are finished; all the computers need to be replaced. Attorney Santos replied Fresno County sells their used computers at a good rate. Finance Director Martin inquired if there is a way to promote and educate residents that they can receive and pay the utility billing online, since the city has the capability to do so.
- **Council Member Sablan** – Asked for an update on the Senior Center and what the new design/remold look like. Acting City Manager/Public Works Director, Ben Gallegos replied, once we get an Architect, through the CDBG, we will work on the new design to fit needs and wants. The city needs to looking at hiring Sadie Navarro at the Senior Center and working to continue the summer lunch program. Acting City Manager/Public Works Director, Ben Gallegos stated the lunch program is being offered at the school. Council Member Sablan, answered the program is also at the Children's Comer but would like it at the Senior Center too.
- **Mayor Valdez** – Asked for an update on the Terra Verde Agreement, if it is possible to add solar to city buildings. Wants to consider hiring someone to keep the website updated and maintain a city Instagram to inform public of all city business matters, even if it is just a part-time position. City Planner Schoettler mentioned, earlier the city needs to promote the city to bring new businesses or developments maybe this will be an effective source.

ADJOURNMENT - Motion to adjourn by Council Member Sablan, second by Council Member Jenkins; motion passes by 4-0 vote at 8:20 p.m.



REPORT TO CITY COUNCIL
— MEMORANDUM —

AGENDA ITEM NO: _____

COUNCIL MEETING DATE: April 18, 2016

SUBJECT: Warrant Register Dated: April 18, 2016

RECOMMENDATION:

In accordance with Section 37202 of the Government Code of the State of California there is presented here with a summary of the demands against the City of Firebaugh covering obligations to be paid during the period of:

MARCH 01, 2016 – MARCH 31, 2016

Each demand has been audited and I hereby certify to their accuracy and that there are sufficient funds for their payment as of this date.

IT IS HEREBY RECOMMENDED THE CITY COUNCIL
APPROVE THE REGISTER OF DEMANDS AS FOLLOWS:

GENERAL WARRANTS	# 33241 – #33357	<u>\$ 571,056.77</u>
PAYROLL WARRANTS.....	# 66696 – #66807	<u>\$ 462,873.03</u>
TOTAL WARRANTS.....		\$ 1,033,929.80

**CITY OF FIREBAUGH ACCOUNTS PAYABLE
WARRANTS MARCH 1, 2016 - MARCH 31, 2016**

<u>Check</u>	<u>Check</u>		<u>Net</u>	
<u>Number</u>	<u>Date</u>	<u>Name</u>	<u>Amount</u>	<u>Description</u>
32276	3/8/2016	DMV RENEWAL	\$ (84.00)	Ck# 032276 Reversed
33241	3/1/2016	CITY OF FIREBAUGH	\$ 40,346.99	UNITED SEC BANK-P/R ACCT.
33242	3/1/2016	CITY OF FIREBAUGH	\$ 82,525.42	UNITED SEC BANK-PAYROLL
33243	3/4/2016	AGRI-VALLEY IRRIGATION	\$ 11.24	DUNKLE PARK-VALVE BO
			\$ 35.04	HOWARD STORM PUMP-PARTS
			\$ 4.45	SEWER FARM DOG POUND
			\$ 28.13	PARKERS PARK-REDI MIX
			\$ 3.43	DUNKLE PARK-COUPPLING
			\$ 41.78	FOR OCTAVIO-PIPE CUTTER
			\$ 185.18	MALDONADO PARK BASEBALL
			\$ 16.46	HOWARD STORM PUMP-PARTS
Check Total:			\$ 325.71	
33244	3/4/2016	BIG G'S AUTOMOTIVE CENTER	\$ 315.09	MAINT. DEPT-95 GMC STARTER
			\$ 29.12	PD-PART
			\$ 84.09	PD#5 REPAIR PARTS
			\$ 17.29	PW-BUCKETS
Check Total:			\$ 445.59	
33245	3/4/2016	BOGIE'S PUMP SYSTEMS	\$ 2,607.40	SEWER-PARTS
33246	3/4/2016	JOHN BORBOA	\$ 1,666.66	STIPEND FOR MONTH OF MARCH
33247	3/4/2016	CALIF WATER ENVIRONMENT A	\$ 245.00	COLLECTION SYSTEM MAINT.
			\$ (245.00)	Ck# 033247 Reversed
33248	3/4/2016	COLLINS & SCHOETTLER	\$ 1,860.00	FEBRUARY 2016 PLANNING
33249	3/4/2016	COOK'S COMMUNICATIONS	\$ 155.00	PD- POWER CONNECTION
33250	3/4/2016	DEPARTMENT OF JUSTICE	\$ 140.00	JANUARY 2016 BLOOD ALCOHOL
33251	3/4/2016	FIREBAUGH AUTO REPAIR	\$ 485.54	2006 FORD CROWN VIC UNIT
			\$ 10.81	1940 TRI CIRCLE REPAIR
			\$ 51.05	1940 TRIC CIRCLE WATER REPAIR
			\$ 21.61	TRUCK #12-GUIDE/SHOP LITE
Check Total:			\$ 147.80	
33253	3/4/2016	BENJAMIN GALLEGOS	\$ 103.00	PER DIEM PUBLIC WORKS OFF

**CITY OF FIREBAUGH ACCOUNTS PAYABLE
WARRANTS MARCH 1, 2016 - MARCH 31, 2016**

<u>Check</u> Number	<u>Check</u> Date	<u>Name</u>	<u>Net</u> Amount	<u>Description</u>
33254	3/4/2016	JOSE FRED GOMEZ	\$ 385.00	FD VEHICLE REPAIR-C-150,E
33255	3/4/2016	GUTHRIE PETROLEUM, INC.	\$ 1,091.83	UNLEADED GASOLINE
			\$ 737.80	BULK DIESEL
			\$ 987.56	UNLEADED GASOLINE
			\$ 928.76	UNLEADED GASOLINE
			\$ 738.07	BULK UNLEADED GASOLINE
			<u>\$ 1,049.83</u>	BULK UNLEADED GASOLINE
Check Total:			\$ 5,533.85	
33256	3/4/2016	HUB INTERNATIONAL	\$ 125.98	SPECIAL EVENT INS. FEBRUARY
33257	3/4/2016	KER WEST, INC. DBA	\$ 99.00	LEGAL NOTICES-PLANNING
33258	3/4/2016	KTS SERVICES OF NORTHERN	\$ 2,238.54	PHONE SERVICE UPGRADE
33259	3/4/2016	KUSSMAUL ELECTRONICS CO.	\$ 474.78	FD-AUTO CHARGE VOLT
33260	3/4/2016	RODDY A. LAKE	\$ 294.19	POLICE HEALTH INS
33261	3/4/2016	LOZANO SMITH, LLP	\$ 2,119.50	GENERAL LEGAL MATTERS
			\$ 550.00	RETAINER TRU FEB. 18, 201
			\$ 80.00	PLANNING AND ZONING THRU
			<u>\$ 32.00</u>	PACIFIC AG SERVICES CLAIM
Check Total:			\$ 2,781.50	
33262	3/4/2016	MANUELS TIRE SERVICE, INC	\$ 20.76	PW-TUBE
			\$ 85.56	PW-TUBE
			<u>\$ 246.98</u>	SEWER PLANT-TUBE/RADIAL
Check Total:			\$ 353.30	
33263	3/4/2016	MID-VALLEY DISPOSAL	\$ 63.63	1800 HELM CANAL RD
33264	3/4/2016	NAPA AUTO PARTS - FIREBAU	\$ 4.72	PD#2 FMX FUSE
			\$ 14.12	PD#3 COOLANT
			\$ 10.60	PD#3 ANTIFREEZE
			\$ 12.98	PD#3 ANTIFREEZE
			\$ 62.64	TRUCK #10 CIR/BRKR

**CITY OF FIREBAUGH ACCOUNTS PAYABLE
WARRANTS MARCH 1, 2016 - MARCH 31, 2016**

<u>Check</u>	<u>Check</u>		<u>Net</u>	
<u>Number</u>	<u>Date</u>	<u>Name</u>	<u>Amount</u>	<u>Description</u>
33264	3/4/2016	NAPA AUTO PARTS - FIREBAU	\$ 24.22	TRUCK 34 HITCH LOCK
			\$ 10.40	PD#5 THERMOSTAT SEAL
			\$ 6.77	PD#5 OIL FILTER
			\$ 5.40	SHOP TOOL-WRENCH
			\$ 43.28	TRACTOR-HYDRAULIC OIL
			\$ 3.83	DODGE RAM #5 POSTS FOR BA
			\$ 126.94	FLASHLIGHT/BATTERIES-SHOP
			\$ 9.20	PW#40 SWEEPER-RING
			\$ 23.43	HUB STUDS-LIL TRAILER/FUS
			\$ 32.08	PW#26 BATTERY MOWER
			\$ 10.39	PW#40 WTHRSTRP ADHV/GEL
			\$ 18.11	FD-ARMOR ALL TIRE FOAM/BL
			\$ 402.42	FD-E550 BATTERY
			\$ 5.90	PW SPRAY RIG-AEROSOL PAIN
			\$ 12.82	PW#4- HALOGEN CAPSULE
			\$ 12.29	SPRAY-KRYLON CASE GREEN
Check Total:			\$ 852.54	
33265	3/4/2016	OFFICE DEPOT, INC.	\$ 60.85	POLICE DEPT-OFFICE SUPPLI
33266	3/4/2016	PITNEY BOWES #8000-9090-	\$ 520.99	FEBRUARY 2016 POSTAGE REF
33267	3/4/2016	QUILL CORPORATION	\$ 6.48	SCISSORS-OFFICE SUPPLY
			\$ 284.99	JANITORIAL SUPPLIES-ALL D
			\$ 101.26	OFFICE SUPPLIES
			\$ 548.55	JANITORIAL SUPPLIES ALL D
			\$ 221.99	JANITORIAL SUPPLIES/BINDE
			\$ 7.20	CITY HALL-BINDER INSERTS
Check Total:			\$ 1,170.47	
33268	3/4/2016	SPARKLETTTS	\$ 47.12	PUBLIC WORKS/SHOP
33269	3/4/2016	STATE WATER RESOURCES CON	\$ 70.00	WATER DISTRIBUTION OPERAT
33270	3/4/2016	STAPLES BUSINESS ADVANTAG	\$ 46.14	PD-OFFICE SUPPLIES
33271	3/4/2016	TELEPACIFIC COMMUNICATION	\$ 1,549.41	ALL DEPTS-PHONE & INTERNE

**CITY OF FIREBAUGH ACCOUNTS PAYABLE
WARRANTS MARCH 1, 2016 - MARCH 31, 2016**

<u>Check</u>	<u>Check</u>		<u>Net</u>	
<u>Number</u>	<u>Date</u>	<u>Name</u>	<u>Amount</u>	<u>Description</u>
33272	3/4/2016	THARP'S FARM SUPPLY	\$ 17.53	TRUCK #4-BLUE GLOVES
			\$ 7.53	TRUCK #4 WD 40 SPRAY
			\$ 35.06	TRUCK#38/MALDONADO-GLOVES
			\$ 10.80	MALDONADO PARK-REPLACE
			\$ 186.45	PW-PARTS
			\$ 24.20	WELL #15 PRIMER
			\$ 4.68	WELL#13-PRIMER
			\$ 8.64	PD#3-ROLLED ROD
			\$ 4.98	DISK BOLTS
			\$ 6.49	INDUSTRIAL AG BELT
			\$ 12.00	PW# JDM #25-PARTS
			\$ 17.14	TRIGGER JET
			\$ 1.62	CURTIS KEYS-BACKHOE
			\$ 8.98	J.D.M #25 MAK-A-KEY/HUB
			\$ 0.71	JOHN DEERE MOWER-FLATWASH
			\$ 3.35	JOHN DEERE #25-HUB
			\$ 14.43	TRUCK #4 PRUNNING BUSHES-
			\$ 5.32	MALDONADO LIGHTS-CLEAR
			\$ 240.31	LIFT STATION-PARTS
			\$ 9.25	LIFT STATION-TAPE
			\$ 141.04	STORM DRAIN REPAIR-PARTS
			\$ 22.14	2120 ENRICO REPAIR WATER
			\$ 74.98	PW#26 MOWER-PAINT MARKER
			\$ 23.31	SHOP-PHILLIPS DRIVER/FLOO
			\$ 18.56	TRUCK#7 TRAILER BALL
			\$ 1.52	MALDONADO PARK PULL WIRES
			\$ 16.22	TRUCK #7-BAR&CHAIN OIL GA
			\$ 17.86	SPRAYING WEEDS-COVERALLS
			\$ 18.59	WATER SITE #1-SPRAY PAINT
			\$ 26.93	VALADEZ RECYCLE WATER
			\$ 5.02	POLICE-COUPLING
			\$ 14.06	COMMUNITY CTR SINK
			\$ 20.02	POINT BLADE
			\$ 19.98	MALDONADO PARK-SUPPLIES
			\$ 8.41	MALDONADO PARK-PARTS
			\$ 4.32	FLANGED ELBOW
			\$ 32.72	TRUCK #7 PITCHFORK
			\$ 29.76	SPOOL TRIMMER LINE
			\$ 5.81	JOHN DEERE MOWER-FLATWASH

CITY OF FIREBAUGH ACCOUNTS PAYABLE
WARRANTS MARCH 1, 2016 - MARCH 31, 2016

<u>Check</u>	<u>Check</u>		<u>Net</u>	
<u>Number</u>	<u>Date</u>	<u>Name</u>	<u>Amount</u>	<u>Description</u>
33272	3/4/2016	THARP'S FARM SUPPLY	\$ 17.52	#34 CRIMPING TOOL/TAPE
			\$ 25.21	MALDONADO PARK-PARTS
			\$ 69.40	PW#16-PULL PIN
			\$ 33.52	PW#16 -COLLAR/PULL PIN
			\$ 649.11	PW-PARTS
			\$ 43.65	MOWER MALDONADO PARK
			\$ 11.57	DUNKLE PARK LIGHTS-MASTER
			\$ 32.69	JOHN DEERE TRACTOR-FILLER
			\$ 11.69	MALDONADO PARK-WEDGE
			\$ 5.83	STREETS-PAINT
			\$ 51.27	WATER LEAK SITE #2-PARTS
			\$ 7.06	EDGER-AGRI BELT
			\$ 12.10	SHOP SUPPLIES-GRIND DISC
			\$ 24.81	MALDONADO PARK-BLUE GLOVE
			\$ 19.37	BOW RAKE
			\$ 13.08	WWTP-TAPE/NIPPLE
			\$ 10.26	WWTP-NIPPLE
			\$ 27.22	EDGER-E BLADE/V-BELT
			\$ 7.20	UTILITY V-BELT
			\$ 16.16	PRUNING SHEERS
			\$ 40.30	SONAR/SITE #1
			\$ 23.81	DISP. COVERALLS
			\$ 1.95	HOWARD PUMP STORM DRAIN
			\$ 23.93	RODEO PARK-GLOVE/MACHETE
			\$ 1.04	STORM DRAIN REPAIR
Check Total:			\$ 2,300.47	
33273	3/4/2016	THOMASON TRACTOR COMPANY	\$ 27.00	SHOP-FIXCUT
			\$ 33.20	LAWN MOWER-STUD
			\$ 24.99	CHAINSAW
			\$ 5.94	BACKHOE KEYS
			\$ 33.18	LAWN MOWER-IDLER
			\$ 220.01	PW#26 LAWNMOWER-PARTS
			\$ 44.90	CHAIN SAW-CHAIN LOOP
			\$ 4.70	CHAINSAW RETAINER
			\$ 43.51	OIL
			\$ 0.96	CHAINSAW-GASKET
			\$ 360.88	TRIMMER/OIL-MALDONADO
			\$ 181.84	JD 2155-PIN,BUSHING,ORING
			\$ 64.91	PARKS-AUTOCUT
			\$ 64.43	LAWN MOWER SEWER PLANT

**CITY OF FIREBAUGH ACCOUNTS PAYABLE
WARRANTS MARCH 1, 2016 - MARCH 31, 2016**

<u>Check</u>	<u>Check</u>		<u>Net</u>	
<u>Number</u>	<u>Date</u>	<u>Name</u>	<u>Amount</u>	<u>Description</u>
33273	3/4/2016	THOMASON TRACTOR COMPANY	\$ 20.83	ROTARY SWI-SEWER FARM MOW
			\$ 20.83	LAWN MOWER-ROTARY
			\$ 3.33	LAWN MOWER-PW #26-NUT
			\$ 154.38	JOHN DEERE-TANK
Check Total:			\$ 1,309.82	
33274	3/4/2016	TIFCO INDUSTRIES	\$ 1,168.55	PARTS FOR EQUIP. REPAIR
33275	3/4/2016	U.S. POSTMASTER	\$ 814.08	UTILITY BILLING MARCH 201
33276	3/4/2016	VALLEY NETWORK SOLUTIONS	\$ 1,158.10	MONITORING FOR APRIL 2016
33277	3/4/2016	WEST SIDE DRUG STORE	\$ 3.56	FD-SUPPLIES
33278	3/4/2016	FRESNO HOUSING AUTHORITY	\$ 44.74	MQ CUSTOMER REFUND
33279	3/4/2016	PAULINE MORALES	\$ 8.80	MQ CUSTOMER REFUND
33280	3/4/2016	DALLAS, E PENDLETON	\$ 65.44	MQ CUSTOMER REFUND
33281	3/4/2016	FRANCISCO PINA	\$ 34.74	MQ CUSTOMER REFUND
33282	3/4/2016	MATT RANSON	\$ 62.33	MQ CUSTOMER REFUND
33283	3/4/2016	EUSTOLIA RODRIGUEZ	\$ 27.43	MQ CUSTOMER REFUND
33284	3/4/2016	SOCORRO SAAVEDRA	\$ 31.19	MQ CUSTOMER REFUND
33285	3/4/2016	ELENA ORTIZ DE SANTILLAN	\$ 40.37	MQ CUSTOMER REFUND
33286	3/11/2016	AT&T MOBILITY	\$ 327.60	#287249191200 POLICE DEPT
33287	3/11/2016	AT&T	\$ 104.76	9391012022 CITY HALL
			\$ 135.55	9391012021 COMM. CTR
			\$ 17.88	9391012023 CITY HALL
			\$ 504.98	9391012020 POLICE
			\$ 0.47	9391019185 PHONE
Check Total:			\$ 763.64	
33288	3/11/2016	AUTOZONE COMMERCIAL (1379	\$ 3.19	PW#2-WINDOW HANDLE
			\$ 44.44	TRUCK #32-TRI-BALL MOUNT
			\$ 26.64	98'CHEVY- DOOR HANDLE
			\$ 52.20	UNIT #8- POWER INVERTER

**CITY OF FIREBAUGH ACCOUNTS PAYABLE
WARRANTS MARCH 1, 2016 - MARCH 31, 2016**

<u>Check</u>	<u>Check</u>		<u>Net</u>	
<u>Number</u>	<u>Date</u>	<u>Name</u>	<u>Amount</u>	<u>Description</u>
33288	3/11/2016	AUTOZONE COMMERCIAL (1379	\$ 11.93	PD#8-UNIV FLAT BL
			\$ 5.35	WEEDWACHERS-LUCAS 2 CYCLE
			\$ 7.12	WEEDEATERS-2000 CLEAR
			\$ 30.29	PD#5-DURALAST GOLD BRAKE
			\$ 22.96	PD#5-BALL JOINT LW
			\$ 16.01	PW SHOP-STEERING FLUID
			\$ 57.03	SPRAY RIG
			\$ 104.97	PW#39-DURALAST BATTERY
		Check Total:	\$ 382.13	
33289	3/11/2016	FELICIANO BERNAL	\$ 150.00	A/F HALL CLEANING DEPOSIT
33290	3/11/2016	BSK & ASSOCIATES, INC.	\$ 25.00	LAB ANALYSIS
			\$ 70.00	LAB ANALYSIS
			\$ 67.50	LAB ANALYSIS
			\$ 265.00	LAB ANALYSIS
			\$ 67.50	LAB ANALYSIS
			\$ 55.00	LAB ANALYSIS
			\$ 127.50	LAB ANALYSIS
			\$ 25.00	LAB ANALYSIS
			\$ 55.00	LAB ANALYSIS
			\$ 31.26	LAB ANALYSIS
			\$ 67.50	LAB ANALYSIS
			\$ 84.42	LAB ANALYSIS
			\$ 68.76	LAB ANALYSIS
		Check Total:	\$ 1,009.44	
33291	3/11/2016	CEMEX	\$ 308.29	MATERIALS FOR REPAIR
33292	3/11/2016	CORBIN WILLITS SYSTEMS	\$ 1,950.00	NEW PROGRAMS FOR SENSUS
			\$ 822.18	ADMINISTRATION C/W SERVICE
		Check Total:	\$ 2,772.18	
33293	3/11/2016	CORELOGIC SOLUTIONS, LLC.	\$ 150.00	REALQUEST FEE FEBRUARY 2016
33294	3/11/2016	CROP PRODUCTION SERVICES,	\$ 1,602.82	MATERIALS
33295	3/11/2016	DEPARTMENT OF JUSTICE	\$ 64.00	FEBRUARY 2016 FINGERPRINT
33296	3/11/2016	EPPLER TOWING & TRANSPORT	\$ 75.00	PD-UNIT #2

**CITY OF FIREBAUGH ACCOUNTS PAYABLE
WARRANTS MARCH 1, 2016 - MARCH 31, 2016**

<u>Check</u>	<u>Check</u>		<u>Net</u>	
<u>Number</u>	<u>Date</u>	<u>Name</u>	<u>Amount</u>	<u>Description</u>
33297	3/11/2016	ESTRADA, GABRIELA	\$ 80.00	NEW WATER DEPOSIT REFUND
33298	3/11/2016	FIREBAUGH SUPER MARKET	\$ 5.58	SENIOR CTR-NAPKINS
			\$ 3.21	COMM. CTR
			\$ 4.29	SEWER LEAKS-BLEACH
			\$ 18.90	JANITORIAL SUPPLIES
			\$ 19.99	SENIOR CTR-CAKE
			\$ 16.01	MALDONADO PARK-JANITORIAL
			\$ 6.75	JANITORIAL
Check Total:			\$ 74.73	
33299	3/11/2016	FIREBAUGH VOLUNTEER FIRE	\$ 600.00	FIRE DEPT SERVICE REIM. POLICE
33300	3/11/2016	FRESNO COUNTY TREASURER	\$ 155.58	ACCESS FEE CONTRACT FEB
33301	3/11/2016	FRESNO COUNTY AUDITOR'S O	\$ 25.00	POLICE PARKING MONTH JAN
33302	3/11/2016	FRESNO-MADERA AREA AGENCY	\$ 100.94	1/16 USDA QUALIFIED MEAL
33303	3/11/2016	FRESNO OXYGEN	\$ 214.19	FD-MEDICAL OXYGEN
			\$ 42.92	SHOP-SUPPLIES
Check Total:			\$ 257.11	
33304	3/11/2016	G&K SERVICES, INC.	\$ 14.18	CITY HALL
			\$ 84.51	CITY SHOP
			\$ 16.72	COMMUNITY CENTER
			\$ 10.73	WASTE WATER FACILITY
			\$ 21.17	SENIOR CENTER
			\$ 14.18	CITY HALL
			\$ 84.51	CITY SHOP
			\$ 16.72	COMMUNITY CENTER
			\$ 10.73	WASTE WATER FACILITY
			\$ 21.17	SENIOR CENTER
			\$ 14.18	CITY HALL
			\$ 84.51	CITY SHOP
			\$ 16.72	COMMUNITY CENTER
			\$ 10.73	WASTE WATER FACILITY
			\$ 21.17	SENIOR CENTER
			\$ 14.18	CITY HALL
			\$ 84.51	CITY SHOP
			\$ 16.72	COMMUNITY CENTER
			\$ 10.73	WASTE WATER FACILITY

**CITY OF FIREBAUGH ACCOUNTS PAYABLE
WARRANTS MARCH 1, 2016 - MARCH 31, 2016**

<u>Check</u>	<u>Check</u>		<u>Net</u>	
<u>Number</u>	<u>Date</u>	<u>Name</u>	<u>Amount</u>	<u>Description</u>
33304	3/11/2016	G&K SERVICES, INC.	\$ 21.17	SENIOR CENTER
			\$ 84.51	CITY SHOP
			\$ 16.72	COMMUNITY CENTER
			\$ 10.73	WASTE WATER FACILITY
			\$ 21.17	SENIOR CENTER
			\$ 14.18	CITY HALL
			\$ 84.51	CITY SHOP
			\$ 16.72	COMMUNITY CENTER
			\$ 10.73	WASTE WATER FACILITY
			\$ 21.17	SENIOR CENTER
			\$ 14.18	CITY HALL
			\$ 84.51	CITY SHOP
			\$ 16.72	COMMUNITY CENTER
			\$ 10.73	WASTE WATER FACILITY
			\$ 21.17	SENIOR CENTER
Check Total:			\$ 1,016.99	
33305	3/11/2016	GOLDEN STATE FLOW	\$ 395.93	SENSUS METER
33306	3/11/2016	HINDERLITER, deLLAMAS	\$ 1,324.44	AUDIT SERVICES-SALES QTR
33307	3/11/2016	KTS SERVICES OF NORTHERN	\$ 900.00	SERVICE CALL CHANGE
33308	3/11/2016	ELSA LOPEZ	\$ 936.60	POLICE HEALTH INS
33309	3/11/2016	LOZANO SMITH, LLP	\$ 64.00	SUCCESSOR AGENCY THRU FEB
33310	3/11/2016	MID-VALLEY DISPOSAL	\$ 26,072.31	SERVICES FOR FEBRUARY 2016
33311	3/11/2016	MONTEZ, LORRAINE	\$ 100.00	A/F HALL CLEANING DEPOSIT
33312	3/11/2016	PACIFIC GAS & ELECTRIC	\$ 3,542.92	#7355932148-1 NEW METER S
			\$ 57.24	#5868421949-4 PARK DEPT
			\$ 32.66	3228327255-0 FIRE DEPT
Check Total:			\$ 3,632.82	
33313	3/11/2016	PEOPLE FACTS	\$ 29.95	PD-CREDIT REPORT
33314	3/11/2016	QUINN COMPANY, INC.	\$ 977.80	TROUBLE SHOOT & REPAIR
33315	3/11/2016	QUILL CORPORATION	\$ 55.07	OFFICE SUPPLIES

**CITY OF FIREBAUGH ACCOUNTS PAYABLE
WARRANTS MARCH 1, 2016 - MARCH 31, 2016**

<u>Check</u>	<u>Check</u>		<u>Net</u>	
<u>Number</u>	<u>Date</u>	<u>Name</u>	<u>Amount</u>	<u>Description</u>
33316	3/11/2016	SPARKLETTTS	\$ 24.09	POLICE DEPARTMENT
			\$ 47.46	CITY HALL
Check Total:			\$ 71.55	
33317	3/11/2016	STAPLES BUSINESS ADVANTAG	\$ 38.90	FLPD-FLASHDRIVES
33318	3/11/2016	ST. JOSEPH'S CHURCH	\$ 100.00	A/F HALL CLEANING DEPOSIT
33319	3/11/2016	USA BLUEBOOK	\$ 21.64	CUTTER T406 SPEAR
33320	3/11/2016	U.S. BANK EQUIPMENT FINAN	\$ 493.17	RNT/LEASE EQUIP
33321	3/11/2016	WESTERN EXTERMINATOR CO.	\$ 36.50	8000 HELM CANAL RD
			\$ 67.00	CITY HALL
			\$ 45.25	401 THOMAS CONBOY
			\$ 34.00	1666 11TH ST
			\$ 57.00	1655 13TH ST
Check Total:			\$ 239.75	
33322	3/14/2016	CITY OF MERCED	\$ 36.00	BEN/PIO MEETING LUNCHEON
33323	3/15/2016	FRESNO CO ECONOMIC OPPORT	\$ 60.00	SENIOR CTR-BUS FARE
33324	3/15/2016	CITY OF FIREBAUGH	\$ 81,625.95	UNITED SEC BANK-PAYROLL
33325	3/17/2016	AG & INDUSTRIAL SUPPLY	\$ 6.48	STRING TRIMMER
			\$ 4.75	SPARK PLUG-BLOWER
			\$ 34.63	DOG FOOD
			\$ 32.39	SEWER EQUIPMENT REPAIR
			\$ 43.82	DUSK MASK STRING
Check Total:			\$ 122.07	
33326	3/17/2016	BACKFLOW DISTRIBUTORS, IN	\$ 123.41	REPAIR BACKFLOW EQUIPMENT
			\$ 129.70	REPAIR BACKFLOW EQUIPMENT
Check Total:			\$ 253.11	
33327	3/17/2016	CEMEX	\$ 429.02	MATERIAL FOR REPAIRS
33328	3/17/2016	COUNTRY CHARM FLOWERS & G	\$ 75.75	SENIOR CENTER-FLOWERS
			\$ 54.11	SENIOR CTR-PLANT "PRESTON
Check Total:			\$ 129.86	
33329	3/17/2016	ENVIRONMENTAL RENTAL SERV	\$ 334,407.57	VACALL ALL-JET MODEL AJV6

**CITY OF FIREBAUGH ACCOUNTS PAYABLE
WARRANTS MARCH 1, 2016 - MARCH 31, 2016**

<u>Check</u> <u>Number</u>	<u>Check</u> <u>Date</u>	<u>Name</u>	<u>Net</u> <u>Amount</u>	<u>Description</u>
33330	3/17/2016	E POLY STAR, INC.	\$ 1,458.33	CAN LINER/FLAT SEAL BOTTO
33331	3/17/2016	NORTHSTAR CHEMICAL	\$ 1,970.84	SODIUM HYPOCHLORITE
33332	3/17/2016	PACIFIC GAS & ELECTRIC	\$ 33,207.54	#7355932148-1 ALL DEPTS
33333	3/17/2016	CALIF PUBLIC EMPLOYEES RE	\$ 5,700.00	ANNUAL UNFUNDED ACCRUED
			\$ 9,892.00	ANNUAL UNFUNDED ACCRUED
Check Total:			\$ 15,592.00	
33334	3/17/2016	PITNEY BOWES GLOBAL FINAN	\$ 405.85	POSTAGE MACHINE LEASE
33335	3/17/2016	QUILL CORPORATION	\$ 21.41	OFFICE SUPPLIES
			\$ 53.57	BUILDING DEPT SUPPLIES
Check Total:			\$ 74.98	
33336	3/17/2016	RENO'S MEGA MART	\$ 66.87	PW-PROPANE FORKLIFT
33337	3/17/2016	ROLFE CONSTRUCTION COMPAN	\$ 4,088.50	WATERLINE REPAIR
33338	3/17/2016	USA BLUEBOOK	\$ 653.87	REPAIR EQUIPMENT CHECK
33339	3/17/2016	VERIZON WIRELESS	\$ 850.64	FEBRUARY 2016 ALL DEPTS
33340	3/24/2016	ALERT-O-LITE, INC.	\$ 471.95	ASPHALT PATCH/MARKING
33341	3/24/2016	AT&T	\$ 333.71	WATER OPER TELEPHONE
33342	3/24/2016	BROADVIEW CO-OP GIN, INC.	\$ 150.00	A/F HALL CLEANING DEPOSIT
33343	3/24/2016	CALIF WATER ENVIRONMENT A	\$ 245.00	NOAH MARQUEZ-MAINT. CERT
33344	3/24/2016	CORBIN WILLITS SYSTEMS	\$ 1,020.18	ADMINISTRATION C/W SERVICE
33345	3/24/2016	DISH	\$ 38.31	SENIOR CENTER CABLE
33346	3/24/2016	FILTRONICS INCORPORATED	\$ 86,146.85	WATER OPER WATER TRMT #2
33347	3/24/2016	FIRST BANKCARD	\$ 0.99	FD-ITUNES
			\$ 23.69	PD-AMAZON-BATTERIES
			\$ 19.83	INTEREST CHARGED
			\$ 49.99	FD-RENEW PCMATIC.COM
			\$ 101.39	FD-TICKETPRINTING
			\$ 21.22	FD-OFFICE DEPOT
			\$ 12.95	PD-EASY KEYS/DOOR LOCKS
			\$ 16.07	PD-AMAZON/BATTERIES
			\$ 36.34	GODADDY.COM RENEWAL
Check Total:			\$ 282.47	

**CITY OF FIREBAUGH ACCOUNTS PAYABLE
WARRANTS MARCH 1, 2016 - MARCH 31, 2016**

<u>Check</u>	<u>Check</u>		<u>Net</u>	
<u>Number</u>	<u>Date</u>	<u>Name</u>	<u>Amount</u>	<u>Description</u>
33348	3/24/2016	GOUVEIA ENGINEERING, INC.	\$ 934.50	720.01 PLANNING GENERAL
			\$ 341.25	725.01 PUBLIC WORKS GENER
			\$ 732.50	740.05-1 TASK 1 PER LAS D
			\$ 206.25	745.10D DESIGN POSO CANAL
			\$ 96.25	745.19D CMAQ PEDESTRIAN F
			\$ 67.50	745.21D RIVER LANE/CARDEL
			\$ 3,276.00	765.05 DEL RIO MAPPING
			\$ 921.38	785.07 GATEWAY PROJECT
			\$ 2,484.56	795.11 RSTP APPLICATIONS
Check Total:			\$ 9,060.19	
33349	3/24/2016	OCCUPATIONAL HEALTH CINTER	\$ 104.00	ENRIQUE DEL MURO-VACCINES
33350	3/24/2016	PACIFIC GAS & ELECTRIC	\$ 1,307.74	#8132925706-7 WELL #17
33351	3/24/2016	QUILL CORPORATION	\$ 5.35	BLACK PENS-MARGARET
			\$ 19.15	OFFICE SUPPLIES
			\$ 24.02	OFFICE SUPPLIES
			\$ 8.27	BLUE PENS-ISABEL
			\$ 11.67	POSTIT SIGN-BUILDING
Check Total:			\$ 68.46	
33352	3/24/2016	STATE WATER RESOURCES CON	\$ 105.00	JESUS PALACIOS-WATER
33353	3/24/2016	STATE & FEDERAL POSTER, I	\$ 107.35	CARE ACT POSTER BOARD
33354	3/24/2016	USA BLUEBOOK	\$ 611.16	MATERIALS-SAW KIT/RIDGID
33355	3/24/2016	ZEE MEDICAL SERVICE CO.	\$ 186.47	PUBLIC WORKS DEPT
			\$ 51.89	CITY HALL
Check Total:			\$ 238.36	
33356	3/29/2016	CITY OF FIREBAUGH	\$ 84,059.66	UNITED SEC BANK-PAYROLL
33357	3/31/2016	CITY OF FIREBAUGH	\$ 38,307.55	UNITED SEC BANK-PAYROLL
Cash Account Total:			\$ 897,922.34	
Total Disbursements:			\$ 897,922.34	

STAFF REPORT

FIREBAUGH CITY COUNCIL

Date: April 18, 2016
To: Firebaugh City Council
From: Karl Schoettler, Planning Consultant
Subject: Adoption of 2016 Firebaugh Housing Element

Overview

After many months of workshops, review and comments, the Firebaugh Housing Element is being presented to the City Council for adoption. It should be mentioned that timing is critical – the City must have the Housing Element adopted by the City Council and forwarded back to the State by the end of this month.

The Planning Commission voted to adopt the Housing Element on March 14. In addition to adopting the Housing Element, the City Council will also be adopting an environmental finding for the document – discussed further below.

The remainder of this staff report gives an overview and refresher of the basics of the Housing Element.

What is the Content and Purpose of the Housing Element?

State of California law outlines the required contents of the Housing Element. These requirements can be found in Section 65580 of the California Government Code.

In general, the Housing Element does three primary things:

- Analyzes the results of the previous Housing Element (in this case the 2009 Housing Element)
- Profiles existing conditions in the community as they relate to:
 - Socioeconomics
 - Housing conditions
 - Housing needs
 - Residential land resources
 - Development Constraints
- Establishes housing goals, objectives and policies for the next 8 years

How Does the Housing Element Relate to the Regional Housing Needs Allocation Plan?

The Housing Element is closely tied to the Regional Housing Needs Allocation Plan (RHNA) prepared by the Fresno County Council of Governments (COG). Among other things, the RHNA assigns a certain number of housing units (broken down into five income categories) to each City in the County as well as the County itself – that should be built during the 8-year planning period. The State of California assigns a total number of units to the COG, which then assigns the units to each jurisdiction in the County. Firebaugh's assignment is 712 units, broken down into the following income groups:

**Table 1: Target Number of Dwelling Units to be Constructed From
January 1, 2016 to December 31, 2023**

Income Group	Units Needed	Percent of total
Extremely Low	64	9%
Very Low	64	9%
Low	169	24%
Moderate	204	29%
Above Moderate	211	29%
Total	712 units	100%

These assignments are based various socioeconomic factors, including projected population growth, incomes, and recent development patterns and represent the number of units that should be constructed in Firebaugh through the end of the year 2023. As has been noted, the City will not be penalized if the private sector does not build all of these units.

Housing Element Outline

The draft Housing Element (attached) is composed of eight chapters. An outline of the individual chapters and their content is as follows:

Chapter 1: Introduction

- Authority
- State Planning Law
- Housing Element Organization
- Plan Area
- Market Area
- Public Participation
- Planning Period
- Consistency with the General Plan

Chapter 2: Evaluation of the 2009 Housing Element

Chapter 3: Community Profile

- Population
- Income
- Retail Sales
- Employment
- Age
- Ethnicity

Chapter 4: Housing Profile

- Housing Units
- Housing Types
- Household Size

Household Tenure
Vacancy Rates

Chapter 5: Housing Needs

Housing Affordability
Overpayment
Housing Quality
Overcrowding
Special Needs:

- Elderly Persons
- Handicapped Persons
- Large Family Households
- Female Heads of Household
- Homeless
- Farm Workers
- Extremely Low Income Households

Projected Housing Needs
Market Demand for Housing
Projected Housing Demand for All Income Levels
Preservation of Assisted Housing

Chapter 6: Residential Land Resources

Available Land Inventory
Availability of Public Facilities:

- Sewer System
- Water
- Storm Drainage
- Circulation system

Chapter 7 Development Constraints

Governmental Constraints:

- Land Use Controls
- Building Codes
- Site Improvements
- Zoning Standards
- Processing Fees
- Development Impact Fees
- Permit Processing
- Governmental Constraints on Housing for Persons with Disabilities
- Consistency with other General Plan Elements

Non-Governmental Constraints:

- Cost of Financing
- Price of Land
- Cost of Construction
- Lifestyle

Environmental Constraints

Chapter 8: Housing Goals, Policies, Objectives and Action Plans

Provisions for Very Low-, Low-, and Moderate-Income Housing
Mitigation of Governmental Constraints
Moderate-Income Housing Opportunities
Conserve and Improve Existing Affordable Housing Stock
Provision of Adequate Sites for Development
Energy Conservation
Equal Housing Opportunities
Preserve At-Risk Assisted Projects
Quantified Objectives

Environmental Analysis

As required by CEQA (California Environmental Quality Act) the City prepared an analysis of potential environmental impacts that may result if the Housing Element is adopted and implemented. The analysis showed the Housing Element by itself would not result in any significant impacts (or impacts that were not previously addressed by the Environmental Impact Report that was prepared for the 2030 Firebaugh General Plan). Accordingly, the study recommends the City adopt a Negative Declaration. This finding is provided for in the attached resolution.

After asking any questions of staff, the City Council should open the public hearing for any public comments and then take action on the Housing Element and environmental finding.

ATTACHMENTS

- Housing Element
- Resolution No. 16-11

RESOLUTION NO. 16-11

A RESOLUTION OF THE CITY COUNCIL OF THE CITY OF FIREBAUGH APPROVING GENERAL PLAN AMENDMENT 2016-01 (THE 2016 HOUSING ELEMENT) AND ADOPTING A NEGATIVE DECLARATION.

WHEREAS, the City of Firebaugh (the "City") has prepared an Update to the Firebaugh Housing Element, consistent with Government Code Sections 65583 and 65588; and

WHEREAS, the Housing Element is a part of Firebaugh's General Plan and is the City's policy document to ensure that safe and decent housing is available for all income groups in the community, and

WHEREAS the Housing Element covers the time period from January 1, 2016 to December 31, 2023, and

WHEREAS, the City has conducted numerous workshops on the Housing Element with the Planning Commission and general public, to solicit public input and comment, and

WHEREAS, consistent with the California Environmental Quality Act (CEQA) the City has also prepared an Initial Environmental Study, which evaluates the Housing Element's potential impacts on the environment. The Study found that adoption and implementation of the Housing Element would not have a significant impact on the environment, and therefore recommends adoption of a Negative Declaration for the Housing Element Update, and

WHEREAS, the Planning Commission conducted a public hearing and voted to adopt the Housing Element and Negative Declaration on March 14, 2016, and

WHEREAS, a public hearing notice was published and posted ten days prior to the City Council's public hearing on the Housing Element Update and Negative Declaration, and

WHEREAS, the City Council accepted public testimony and reviewed the Planning Department's staff report.

NOW, THEREFORE, BE IT RESOLVED by the City Council that the following findings are hereby considered and adopted regarding the Housing Element Update and Negative Declaration:

1. The Housing Element will not have a significant impact on the environment and a Negative Declaration is hereby adopted, consistent with the California Environmental Quality Act of 1970, as amended.
2. A public hearing was held on the Housing Element Update and Negative Declaration by the City Council.
3. The Planning Commission has previously conducted a public hearing on March 14, 2016 and voted to recommend adoption of the Housing Element.
3. The Housing Element Update will ensure that Firebaugh meets its housing obligations as detailed in Government Code Section 65583.

BE IT FURTHER RESOLVED that the City Council hereby adopts the Housing Element Update and the Negative Declaration.

The foregoing Resolution was approved and adopted at a regular meeting of the City Council of the City of Firebaugh held on the 18th day of April, 2016, by the following vote:

AYES:

NOES:

ABSTAIN:

ABSENT:

APPROVED:

ATTEST:

Freddy Valdez, Mayor
City of Firebaugh

Rita Lozano, Deputy City Clerk
City of Firebaugh

**ATTACHMENT A:
CITY OF FIREBAUGH
NEGATIVE DECLARATION**

FIREBAUGH PLANNING DEPARTMENT

1133 P STREET

FIREBAUGH, CA 93622

(559) 659-2043

PROJECT TITLE: 2016 Housing Element

APPLICANT City of Firebaugh
1133 P Street
Firebaugh, CA 93622

PROJECT LOCATION: The project site includes the city limits and Sphere of Influence of the City of Firebaugh.

PROJECT DESCRIPTION: The City of Firebaugh is proposing to adopt the 2016 Housing Element. Required by State law, the Housing Element is a component of the Firebaugh General Plan and establishes goals, policies and action plans to address the housing needs of all income sectors of residents of the community. The planning time frame for the Housing Element is January 1, 2016 to December 31, 2023.

FINDINGS OF NO SIGNIFICANCE:

1. The project does not have the potential to degrade the quality of the environment, substantially reduce the habitat of a fish or wildlife species, cause a fish or wildlife population to drop below self-sustaining levels, threaten to eliminate a plant or animal community, reduce the number or restrict the range of a rare or endangered plant or animal or eliminate important examples of the major periods of California history or prehistory.
2. The project does not have the potential to achieve short-term economic gain, to the disadvantage of long-term environmental goals.
3. The project does not have the potential to have impacts, which are individually limited but cumulatively considerable.
4. The project will not cause substantial adverse effects on people, either directly or indirectly.

DETERMINATION:

Based on an initial environmental assessment and the findings mentioned above, the City of Firebaugh determines that the project will not have a significant impact on the environment.

City Planner

Date Adopted

RESOLUTION NO. 16-10

A RESOLUTION OF THE CITY COUNCIL OF THE CITY OF FIREBAUGH APPROVING THE DESIGNATION OF PERSONS ON SIGNATURE CARDS OF THE FINANCIAL INSTITUTIONS USED BY THE CITY WHICH AUTHORIZE SIGNATURE OF CITY WARRANTS & PAYROLL CHECKS

WHEREAS, the City of Firebaugh, a municipal subdivision of the State of California, now maintains certain bank accounts; and

WHEREAS, the financial institutions, which include but are not limited to West America Bank, United Security Bank, Bank of New York and Local Agency Investment Fund (LAIF), require the designation and signatures of authorized personnel on signature cards and/or related documents in order to sign checks on behalf of the City; and

WHEREAS, two signatures are required on the general warrants and payroll checks of the City; and

WHEREAS, the City needs to remove previous City Manager Kenneth McDonald; and

WHEREAS, the City needs to add Acting City Manager Benjamin Gallegos to be an authorized individuals to sign checks on the bank accounts of the City of Firebaugh.

NOW, THEREFORE, be it resolved by the City Council of the City of Firebaugh that, effective April 19, 2016, authorizes the removal of previous City Manager Kenneth McDonald and add Acting City Manager Ben Gallegos to the current Authorized Signature Card for any signature cards and/or related documents and the following four (4) persons are designated and authorized to sign checks on the bank accounts of the City of Firebaugh, upon signature of the appropriate signature cards and/or related documents:

Benjamin Gallegos
Craig Knight
Brady Jenkins
Pio Martin

Acting City Manager
Council Member
Council Member
Finance Director

The foregoing Resolution was approved and adopted at a regular meeting of the City Council of the City of Firebaugh held on the 18th day of April, 2016, by the following vote:

AYES:

NOES:

ABSTAINED:

ABSENT:

APPROVED:

ATTEST:

Freddy Valdez, Mayor
City of Firebaugh

Rita Lozano, Deputy City Clerk
City of Firebaugh

FARM LAND LEASE - AGREEMENT

**CITY OF FIREBAUGH
1133 P STREET
FIREBAUGH, CA 93622**

1. PROPOSALS:

Proposals must be submitted in sealed envelopes marked "Farm Land Lease", along with any other supporting documents. Proposals must be typed-written, signed (by the respondent or a duly authorized representative of the respondent), and dated. Proposals must remain firm for a period of seventeen (17) days. Faxed or emailed Proposals will not be accepted. Once submitted, the proposals and any supplementary documents become the property of the City of Firebaugh. The City will use discretion concerning disclosure of proprietary information contained in any proposal, but cannot guarantee that information will not be made public. As a governmental entity, the City is subject to the California Public Record Law. Any confidential or proprietary information should be clearly marked as such. The sealed envelope must be addressed and delivered on by the deadline to:

City of Firebaugh
Attn: Deputy Clerk
1133 P Street
Firebaugh, CA 93622

2. LATE PROPOSALS:

Late Proposals will not be accepted. Each Proposer is responsible for submission of its Proposal. Proposals or revisions to Proposal received after the date and time specified above will be rejected for consideration by the City. The city is not liable for any delivery issues or postal delays.

3. WITHDRAWAL OF PROPOSAL:

No Proposal will be allowed to be withdrawn after it has been submitted to the City of Firebaugh, unless approved by the City Council.

4. QUALIFICATIONS OF RESPONDENTS:

Respondents must demonstrate the capability to competently and responsibly engage in soil cultivation and crop production that is not for human consumption and to comply with the Lease Agreement. The City will consider all elements entering into the question determining the qualifications and responsibility of a respondent and reserves the right to reject or accept any/all proposals that are/aren't qualified to perform the work contemplated. The City may require respondents to submit materials, documentation or other matters deemed necessary to determine the ability and qualifications of the respondents to perform the work contemplated, for the protection and welfare of the public in the performance of the Lease Agreement.

5. OPENING OF PROPOSALS:

The proposals will be opened at the date and time stated above by the Interim City Manager and/or such other designated City employee authorized by the City of Firebaugh. No immediate decision will be rendered. Proposals will not be opened to the public, nor disclosed to unauthorized persons prior to award of Contract. However, after award of Contract, all proposals shall be open to public.

6. REJECTION OR ACCEPTANCE OF PROPOSAL:

The City of Firebaugh reserves the right to accept or reject any/all proposals.

7. LEASE AGREEMENT:

The successful individual or entity shall execute a Lease Agreement, which is included in the proposal packet, and within fifteen (15) days after notice of award of the Lease Agreement is given.

8. TERM OF BID:

The bid is a one (2 1/2) year term, beginning with May 1st and December 31st, the City Council of the City of Firebaugh will notify the winning bidder by/before April 19, 2016.

The City of Firebaugh reserves the right to void this contract at any time by either of the parties without cause upon at least thirty (30) days written notice to the other party.

9. LAWS AND REGULATIONS:

The successful individual or entity must be cognizant of and shall adhere to all applicable federal, state and municipal laws, orders, ordinances, regulations and rules. This includes, but is not limited to non-discrimination laws, equal employment obligations, affirmative action mandates, labor standards, and the Americans with Disabilities Act.

10. INSURANCE/ INDEMNIFICATION REQUIREMENTS:

Bidders must have an appropriate amount of Property Damage, Comprehensive General Liability and Workers' Compensation Insurance at all times during the lease term, with coverages acceptable to the Proof submitted with bid.

11. INDEMNIFICATION AND HOLD HARMLESS:

The bidders agrees to indemnify the City of Firebaugh from any/all liability, loss or damage that the City of Firebaugh may suffer as results of claims, demands, causes or judgements against them when the liability, loss or damage is caused by or arises out of the use of the property by the bidder, agents or employees. The bidder agrees to indemnify the City of Firebaugh on all mentioned matters, connected with Bidder's use and possession of the Premises, or operations conducted thereon by Bidder. Bidder further agrees to indemnify, and defend City against all loss, cost, expense, damage, charge, and liability for injury to or death of persons and damage to property occurring due to such use or possession of the Premises, except claims or demands adjudicated to be caused by the negligence or wrongdoing of City. These indemnification provisions shall survive the termination date of the Lease.

LEASE AGREEMENT

THIS LEASE is made and entered into as of May 1, 2016, by and between the City of Firebaugh, County of Fresno, State of California (the "Lessor"), and Roman Echeveste, an individual (the "Lessee"). The Lessor and the Lessee agree as follows:

1. The Lessor hereby leases to the Lessee, and the Lessee hereby hires and leases from the Lessor, the following real property of APN's: 007-100-22, 007-100-26 and 007-100-25 (the "Leased Premises"), situated in the County of Fresno, State of California, and particularly described as

[SEE EXHIBIT "A" ATTACHED AND INCORPORATED HEREIN]

2. a. The term of this lease shall be less than three years, commencing April 10, 2016, and ending at midnight on December 31, 2018, unless terminated earlier pursuant to paragraph 13 below.

- b. As annual base rental for the Leased Premises, the Lessee shall pay the Lessor the sum of \$500.00 each year during the lease term for 139 +/- acres. The base rental for each year of the lease term shall be payable as follows: prorate one-third the total base rental sum (\$ 83.33) on or before June 30; with a remaining full rate rental balance of (\$ 1250.00, to be paid in payments of \$500.00 each year and remaining \$250.00) on or before July 1 of each year of the lease term.

- c. As additional rental for the Leased Premises, the Lessee shall pay when due all other taxes, charges, costs and expenses required to be paid by the Lessee by the terms of this lease.

3. The Lessee shall farm the Leased Premises according to the best practices of husbandry in the Firebaugh area, and shall use his best endeavors and skill to keep the Leased Premises free of trash and debris.

4. a. The Lessee shall have the use of irrigation water, if any, to which the Leased Premises is entitled from an irrigation district, water district or ditch company. The Lessee shall pay any water tolls or charges in connection with the delivery of water to the Leased Premises by such irrigation district, water district or ditch company, and shall pay all taxes and assessments levied during the lease term by such district or company on the Leased Premises or the water stock attributable thereto. The Lessee shall have the use of the well and the pump equipment attached thereto located in the northeast portion of the Leased Premises as shown on Exhibit "A", together with water from such well, for purposes of irrigation. However, the Lessor shall be responsible, without cost to the Lessee, to keep and maintain such well and the pump equipment attached thereto in good condition and repair at all times during the term hereof, except for any damage caused by the Lessee's negligence or improper use of the pump equipment or well.

- b. Except as expressly provided in subparagraph 4.a., the Lessee shall, during the term of this lease, keep the Leased Premises, all structures and improvements thereon, including the pumping plant and pump located south of the well described in subparagraph 4.a., as shown on Exhibit "A", in good condition and repair, except for ordinary wear and tear and damage by the elements. The Lessee shall, at his sole cost and expense, repair, replace any such pipeline, or ditch to the extent that it may become materially damaged or unusable due to the Lessee's negligence or improper use. The Lessee shall keep irrigation ditches reasonably free and clear of weeds and grasses.

5. The Lessee shall accept and utilize all effluent generated by the Firebaugh City waste water treatment plant for the purpose of irrigating crops grown on the Leased Premises and/or on property leased by the Lessee adjacent to the City of Firebaugh farm property, and shall do so in conformity with applicable rules, policies and regulations of the Regional Water Quality Control Board, Fresno County Health Department, Fresno Westside Mosquito Abatement District and other responsible agencies.

6. The Lessee shall pay all charges of \$125 with a meter for the furnishing of electric power, gas, water and other utility services that may be incurred or required in connection with the farming operations on the Leased Premises or for other purposes during the term of this lease. The Lessee also shall pay, when due, any and all taxes (including without limitation possessory interest tax on the Lessee's interest under this lease), assessments (including without limitation any assessments based on benefit the Leased Premises will receive from a public improvement, facility or service) and other charges of any description levied or assessed during the term of this lease by any governmental entity on or against the Lessee's use or occupation of the Leased Premises, including personal property or fixtures placed by the Lessee on the Leased Premises.

7. The Lessee shall not permit or suffer any waste on the Leased Premises or maintain, commit or permit the maintenance or commission on the Leased Premises of any nuisance as now or hereafter defined by law.

8. The Lessor shall have the right to enter on the Leased Premises at all times during the term of this lease, either in person or by nominee, for the purpose of inspecting the Leased Premises and determining whether the obligations, promises and covenants of the Lessee contained in this lease are being kept, observed, and performed.

9. a. At the expiration of the term of this lease, or any prior termination thereof, the Lessee shall surrender possession of the Leased Premises to the Lessor in as good condition as he shall have received it, and with the land in a neat and clean condition. If, at the expiration or prior termination of the lease term, the Lessee has not fully harvested any crop then growing thereon, the Lessee shall have the right to enter on the Leased Premises. Notwithstanding the expiration or termination of the lease term, during such period as may be reasonably necessary to complete the harvesting of the crop in accordance with the best practices of husbandry in the Firebaugh area.

b. At the expiration or prior termination of the lease term, the Lessee shall quietly and peaceably surrender possession of the Leased Premises to the Lessor, unless the subject to the Lessee's right to enter on the Leased Premises to complete harvesting of the crop under subparagraph 9.b. If the Lessee fails to quit and so surrender the Leased Premises upon expiration or prior termination of the lease term, Then, the Lessee's continued occupation of the Leased Premises shall be deemed a month-to-month tenancy governed by all the terms of this lease, except that the annual rental specified in subparagraph 2.b. Payment shall be prorated on a monthly basis such that one-twelfth of the annual rental shall be due and payable by the Lessee, in advance, on the first day of each calendar month during the Lessee's continued occupancy of the Leased Premises.

10. The Lessee shall not sublease the whole or any part of the Leased Premises, nor assign this lease or any interest therein, without the written consent of the Lessor first obtained.

11. The Lessor expressly authorizes Lessee to finance the growing and production of any or all crops on the Leased Premises, and to execute security agreements in the lessor's name. And/or financing statements covering all or any portion of crops growing or to be grown on the Leased Premises during the lease term. The Lessor shall, if reasonably required by any secured party, execute and furnish to the secured

party a subordination of all of the Lessor's interest in crops to the security interest created by any such security agreement and/or financing statement.

12. If the Lessee abandons the Leased Premises or the crops growing thereon before the crops have reached maturity, or before harvest, the Lessor retains the right (without limiting any other rights it may have), at its option, to enter upon the Leased Premises and care for crops and harvest the same. In the event of such abandonment, all rights of the Lessee in the Leased Premises and to the crops growing and standing thereon shall, at the option of the Lessor, be terminated and at an end; provided, however, that if the crops shall be subject to a security interest in favor of any secured party, the secured party shall have all the rights of the Lessor in this paragraph 12.

13. a. The Lessor may terminate the lease term prior to its expiration, as to all or any portion of the Leased Premises, by giving the Lessee 30 days written notice of termination if (i) the Lessee defaults in the payment, on the date due, of any rental amount, or (ii) the Lessee defaults in the performance of any other material obligation hereunder and fails to remedy such default to the Lessor's satisfaction within such 30-day period, or (iii) the Lessor's governing body determines, after giving the Lessee reasonable notice and opportunity to be heard on the matter, that the Leased Premises or such portion thereof is required by the Lessor for its governmental purposes. Upon such termination, the Lessee shall surrender possession of the Leased Premises or portion thereof subject to such termination as provided in paragraph 9 of this lease. If the Lessee fails to surrender possession within 10 days after the effective date of termination, the Lessor shall immediately have the right to reenter upon and take possession of the Leased Premises or such portion thereof.

b. In addition to and without limitation on subparagraph 13.a., if the Lessee any time during the term of this lease shall become insolvent or be adjudged bankrupt, either voluntarily or involuntarily, or should the Lessee commence any proceedings of any nature under any chapter or provision of the United States Bankruptcy Act or any similar state law for the relief of debtors or protection of creditors, this lease shall terminate immediately, at the option of the Lessor. In that event, (i) the Lessor shall have the right to immediately reenter upon and take possession of the Leased Premises, and (ii) this leasehold shall not be or become a part of the bankrupt estate or be subject to any administration under any such proceeding.

14. The Lessor covenants, subject to all the terms, conditions and covenants in this lease, that if the Lessee pays the rental as herein provided, and faithfully performs the covenants, conditions, and agreements on his part to be kept, observed and performed, the Lessee shall have peaceful possession of the Leased Premises during the lease term, without hindrance or interference by the Lessor.

15. The Lessee shall, at all times during the lease term, maintain General Liability Insurance (including operations, products and completed operations coverages) in an amount not less than \$2,000,000 per occurrence for bodily injury, personal injury and property damage. If Commercial General Liability insurance or other form with a general aggregate limit is used, either the general aggregate limit shall apply separately to this project/location or the general aggregate limit shall be twice the required occurrence limit.

16. Property Damage and Workers' Compensation as required by the State of California shall be provided that is necessary in connection with the performance of any agreement with the City of Firebaugh. Said policy shall also include employer's liability coverage no less than one million dollars (\$1,000,000.00) per accident for bodily injury and disease. Evidence of such insurance shall be delivered prior to commencement of the lease term in the form of a certificate of insurance, whether executed by or on behalf of an insurer qualified to do insurance business in the State of California. Which names the Lessor,

its officers and employees as additional insureds and provides that such insurance shall not be canceled or materially altered, or any coverage reduced, without at least 30 days prior notice to the Lessor.

17. The Lessee shall hold harmless and defend the Lessor and its council, commissions, boards, officials, officers, employees and duly authorized volunteers from any and all loss, liability, costs or damages of any nature (whether in contract, statute, tort or strict liability, including without limitation death at any time, personal injury and property damage), and from any and all claims or actions in law or equity (including attorneys' fees, court costs and litigation expenses), arising directly or indirectly out of:

(i) the death or injury of any person, including the Lessee and any of his employees, contractors, invitees and agents, or damage to or destruction of any property, including property owned by the Lessee or any of his employees, contractors, invitees or agents, (A) while such person or property is in or on the Leased Premises or in any way connected with the Leased Premises or any improvements or facilities on or appurtenant to the Leased Premises; or (B) caused or allegedly caused by the condition of the Leased Premises or any improvements or facilities on or appurtenant to the Leased Premises, or by any act or omission of the Lessee or any other person in, on or about the Leased Premises with or without the permission or consent of the Lessee; or

(ii) any farming operations or work performed on the Leased Premises by the Lessee or any of his employees, contractors or agents; or

(iii) the Lessee's violation of or failure to perform any provision of this lease or to comply with any federal, state or local law, ordinance, statute, order or regulation applicable to the Lessee or the Leased Premises; or

(iv) the presence, use, generation, storage, disposal or discharge of any hazardous materials, any hazardous or toxic substances, or any hazardous wastes on the Leased Premises or any portion thereof, or any property adjacent thereto, at any time, by the Lessee or any of his employees, contractors, subcontractors, invitees, agents or representatives, in violation of federal, state or local law.

The foregoing provisions shall not apply to any loss, liability, costs, damages, claims or actions caused solely by the active negligence or willful misconduct of the Lessor or to any use, generation, storage, release, threatened release, disposal, discharge of any hazardous materials on or adjacent to the Leased Premises by any person or entity other than the Lessee prior to the date of this lease (including any clean-up thereof whether before or after such date).

18. No waiver of a breach of any provision of this lease shall be construed or held to be a waiver of breach or any other provision or a waiver, acquiescence in or consent to any other breach of the same provision. To be effective, a waiver must be in writing and signed by an authorized representative of the party making the waiver.

19. Subject to paragraph 10 above, this lease shall bind and benefit the parties and their respective heirs, executors, administrators, successors, transferees and assigns.

20. If either party commences legal action or arbitration to enforce or interpret any provisions of this lease, the prevailing party in such action or arbitration shall be entitled to recover from the losing party reasonable attorneys' fees, court costs and legal expenses in the amounts determined by the court or tribunal having jurisdiction.

21. This lease constitutes the entire agreement of the parties concerning lease of the Leased Premises and the respective rights, duties, covenants and obligations of the parties with respect thereto. This lease integrates and supersedes all negotiations, understandings, representations, terms, conditions and covenants concerning such matters, whether oral or written.

22. No change, amendment or modification to this lease shall be valid unless in writing and signed by the authorized representative(s) of each party.

* * * * *

Each party represents that such party or such party's duly authorized representative has executed this lease as of the Effective Date.

CITY OF FIREBAUGH

Lessee

By _____
Ben Gallegos, Acting City Manager
City of Firebaugh

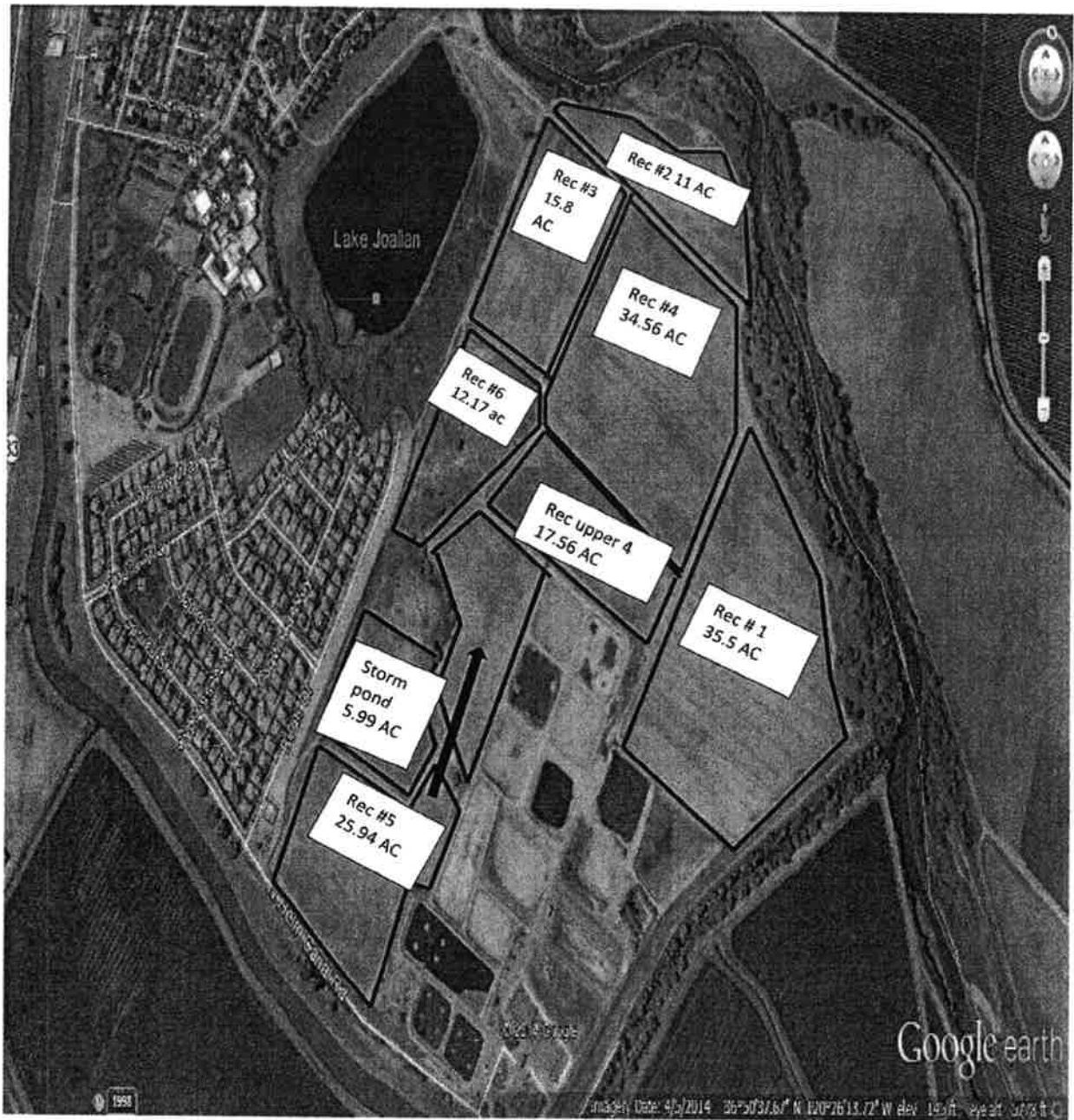
By _____
Roman Echeveste
Echeveste Sheep Company

Date: _____

Date: _____

ATTACHMENT A

Farm Land Lease Map



Reclamation Sites total out to 158.52 acres

ASOF 6/24/14



U.S. Department
of Transportation
Federal Aviation
Administration

AGREEMENT FOR TRANSFER OF ENTITLEMENTS

In accordance with section 47117(c)(2) of Title 49 U.S.C. (hereinafter called the "Act).

County of Fresno, Firebaugh Municipal Airport (F34), Firebaugh, California

(Name of Transferor Sponsor)

Hereby waives receipt of the following amount of funds apportioned to it for each fiscal year specified under section 47114(c) or 47114(d)(3)(A) of the Act.

	<u>Amount</u>	<u>Fiscal Year</u>
	\$ 150,000.	NP 2013
	\$	20
	\$	20
TOTAL	\$ <u>150,000</u>	

On the condition that the Federal Aviation Administration makes the waived amount available to:

City of Palo Alto – Palo Alto Airport (PAO), Palo Alto, California

(Name of Transferee Sponsor)

for eligible projects under section 47104(a) Act. This waiver shall expire on earlier of (date) or when the availability of apportioned funds would lapse under section 47117(b) of the Act.

**FOR THE UNITED STATES OF AMERICA
FEDERAL AVIATION ADMINISTRATION**

FOR

(Signature)

Jim Lomen

(Typed Name)

Manager, Federal Aviation
Administration, San Francisco Airports
District Office

(Title)

(Date)

(Signature)

Ben Gallegos

(Typed Name)

Acting City Manager

(Title)

(Date)

CERTIFICATE OF SPONSOR'S ATTORNEY

I, Roy C. Santos, acting as Attorney for the Sponsor do hereby certify:

That I have examined the foregoing Agreement and find that the Sponsor has been duly authorized to make such transfer and that the execution thereof is in all respects due and proper and in accordance with the laws of the State of California and the Act

Dated at 7404 N. Spalding Ave, Fresno, California, this 11th day of April, 2016.

By

(Signature of Sponsor's Attorney)



TO: Mayor Freddy Valdez and Council Members
FROM: Pio Martin, Finance Director
DATE: April 18, 2016
SUBJECT: General Fund Preliminary Budgets

- General Fund (004):
 - Preliminary Budget for Fiscal Year 2016 -2017
 - Revenue projected to receive \$2,641,265
 - Expense projected to spend \$2,370,491
 - Net Revenue projected \$270,774
- Major Purchases
 - Parks – Chipper Truck, budgeted \$20,000, (004-4080-5002).
 - Police Department – Vehicle purchase grant funded by San Joaquin Valley Air Pollution Control District and State of California \$24,000, (004-4130-5002).
 - City will complete the purchase of the vehicle with funds from
 - Public Safety .05% Sales Tax - \$3,000, (006-4132-5002)
 - Law Enforcement (COPS) - \$10,000, (008-4133-5002)
 - Total cost for vehicle \$37,000
- Major changes in budget compared from previous years.
 - Firebaugh Harvest Festival (Special Events)
 - Entertainment - Increased by \$11,000, 122% - (061-4081-3557)
 - Christmas Festival – Increased by \$3,000 60% - (061-4081-4019)

City of Firebaugh
Fiscal Year 2016 - 2017
General Fund Preliminary Budget

<u>Description</u>	<u>Three Year Average</u>	<u>Adopted Budget FYE 2016</u>	<u>Actual FYE 2016 Thru 02/16</u>	<u>Proposed Budget FY 2016-2017</u>
Current Year Secured	186,234.26	160,000.00	82,253.30	700,000.00
Current Year Unsecured	21,072.17	23,000.00	-	20,000.00
Prior Year Secured	-	-	174.14	250.00
Prior Year Unsecured	1,395.68	2,000.00	202.28	300.00
Other Property Taxes	694.70	-	10.04	20.00
Current Year Supplement Secured	7,762.97	7,500.00	3,930.88	6,000.00
Current Year Supplement Unsecured	24.22	30.00	-	30.00
Prior Year Supplement	239.72	400.00	205.89	350.00
Interest Received on Property Taxes	108.34	100.00	-	100.00
Real Property Transferred Tax	2,635.44	2,500.00	2,374.64	2,700.00
Homeowners Property Tax Relief	5,404.09	5,200.00	2,465.75	5,000.00
Tax Increment Pass Through	44,159.42	45,000.00	6,685.58	10,000.00
Animal License	1,987.33	1,500.00	422.00	1,000.00
Construction & Building Permits	80,996.96	15,000.00	18,744.10	20,000.00
Business License	50,946.17	30,000.00	22,051.00	30,000.00
Plan Check Fees	46,476.62	35,000.00	40,433.78	45,000.00
Electrical Permit Issuance	7,040.71	10,000.00	28,656.09	35,000.00
Mechanical Permit Issuance	368.65	500.00	4,722.25	7,000.00
Plumbing Permit Issuance	663.18	500.00	8,704.95	13,000.00
Re-Roof Tear Off	960.03	1,500.00	1,560.50	2,500.00
Grading Permit	132.00	-	410.75	600.00
Planning Fee	973.04	250.00	485.00	700.00
Engineering Fee	787.42	500.00	406.88	600.00
Encroachment Fee	1,166.67	1,000.00	2,500.00	3,500.00
Semic Revenue	-	-	95.97	150.00
Motor Vehicle Fines	53,949.83	45,000.00	38,710.69	40,000.00
Criminal Fines	2,211.62	500.00	401.08	600.00
Highway Motor Vehicle Fee	3,500.74	3,500.00	3,138.70	4,000.00
Interest Income	395.06	300.00	178.11	275.00
State Motor Vehicle in Lieu Tax	755,269.37	720,000.00	298,024.31	-
Sales Tax	631,951.46	490,000.00	350,109.05	450,000.00
Franchise Fees	106,574.66	100,000.00	24,221.61	124,000.00
Utility User Tax - PGE	558,805.73	500,000.00	529,668.94	800,000.00
Utility User Tax - Telephone	31,005.61	25,000.00	27,300.13	42,000.00
Hotel / Motel Tax (4%)	7,094.41	6,000.00	4,527.96	7,000.00
Tobacco Retail Permit Fee	1,868.33	1,900.00	1,140.00	2,090.00
Zoning & Planning Fees	3,563.33	2,000.00	1,985.00	3,000.00
Maldonado Park Light Use	-	-	50.00	100.00
Abandoned Vehicle Abatement	2,501.67	2,500.00	-	-
Live Scan Fees	3,350.67	2,000.00	2,789.00	3,500.00
Special Police Services	718.26	1,000.00	-	-
PD Reserve Training Fund	1,607.03	900.00	813.98	1,000.00
Police Reserve Wage Reimbursement	26,310.18	16,500.00	6,242.60	9,500.00
State of California POST	2,212.53	2,500.00	1,091.90	3,000.00
Emergency Response Fee - Police	3,685.59	-	2,661.00	4,000.00
Parking Violations	14,614.00	5,500.00	3,885.00	6,000.00
CHP - Release	38,561.55	25,000.00	19,399.00	25,000.00
Fire Department - Instant Aide	19,616.67	19,800.00	-	19,800.00

City of Firebaugh
Fiscal Year 2016 - 2017
General Fund Preliminary Budget

<u>Description</u>	<u>Three Year Average</u>	<u>Adopted Budget FYE 2016</u>	<u>Actual FYE 2016 Thru 02/16</u>	<u>Proposed Budget FY 2016-2017</u>
SB90 State Mandated Programs	4,792.17	8,000.00	13,870.76	15,000.00
FMAAA Nutrition	6,202.67	8,000.00	5,331.00	8,000.00
Senior Citizens Meal Donation	1,501.88	1,200.00	1,429.25	2,000.00
Senior Center Fundraising Fund	1,283.43	-	(1,084.53)	-
Farmers Market Revenues	-	-	-	600.00
Miscellaneous Revenue	19,506.95	10,000.00	25,752.04	10,000.00
Facilities Rental - AF Community Center	6,037.99	1,500.00	1,555.00	2,000.00
Administrative Citation	328.33	250.00	-	2,000.00
Bad Debts	(44,392.50)	-	-	-
Police Copy of Documents	6,503.50	3,500.00	2,986.50	3,500.00
Municipal Code Violation	1,661.67	500.00	-	500.00
Police Services	90,780.95	110,000.00	88,766.03	115,000.00
Surplus Equipment / Vehicles	-	-	500.00	-
Reimbursements & Refunds	29,914.72	-	-	34,000.00
Total Revenue	2,841,603.42	2,454,330.00	1,682,939.88	2,641,265.00
Percentage Increase / (Decrease)	8.70%	-1.23%	-145%	7.08%
Dollar Amount Increase / (Decrease)	247,256.93	(30,250.00)	(1,158,663.54)	186,935.00

City of Firebaugh
Fiscal Year 2016 - 2017
General Fund Preliminary Budget

Fund Department
#004 General Fund Salaries and Expenses

<u>Expense Code</u>	<u>Description</u>	<u>Three Year Average</u>	<u>Adopted Budget FYE 2016</u>	<u>Actual FYE 2016 Thru</u>	<u>Proposed Budget FY 2016-2017</u>
1000	Salaries & Wages	804,585	779,089	456,873	736,940
1001	Dispatchers Wages	192,825	200,488	134,985	200,353
1002	Wages / Mechanic, Janitor	27,776	33,443	18,081	37,509
1004	Reserve Wages	28,463	17,525	14,942	5,750
1005	Overtime	23,406	29,000	29,206	30,800
1006	PD Overtime Special Events	6,065	-	6,034	6,000
1007	Dispatchers Overtime	3,544	2,700	1,065	2,000
1008	PD Double Time (DUI / Avoid 21 Program)	1,241	2,000	2,787	-
1009	PD Overtime DUI / Avoid 21 Program	13,464	21,000	9,969	-
1010	FICA	81,226	83,838	50,079	77,728
1011	Health Insurance	220,789	172,032	139,419	201,437
1013	PERS Retirement	328,812	306,743	104,824	179,464
1014	State Unemployment Insurance	3,813	-	1,485	1,000
1015	Workers Compensation	66,379	73,606	69,792	81,228
1016	Uniform Expense	9,425	10,680	8,413	7,080
1022	Unfunded Liability CalPERS	-	136,790	91,800	150,816
1023	Retirement Health Insurance	-	17,468	-	-
	Total Salaries	1,811,814	1,886,402	1,139,753	1,718,105
	Percentage Increase / (Decrease)	0.81%		60.42%	-9.80%
	Dollar Amount Increase / (Decrease)	12,065		746,649	(168,297)
2001	Office Supplies	4,349	7,000	7,100	8,500
2004	Printing & Binding	1,171	1,000	456	1,000
2005	Postage & Shipping	2,730	2,650	1,677	2,820
2006	Medical Supplies	620	750	272	1,050
2008	Janitorial Supplies	5,159	6,600	2,298	3,375
2009	Operational	13,338	3,500	3,026	3,800
2010	Range Supplies	1,455	2,500	2,492	3,000
2011	Protective Clothing	1,432	1,200	102	1,125
2013	Gasoline, Oil & Lubricants	53,444	47,700	21,720	37,650
2014	Tires, Batteries & Accessories	5,565	5,300	4,285	8,200
2016	Safety Equipment	882	500	347	250
2017	Chemicals	1,578	1,700	1,129	1,700
2501	Advertisement	1,732	1,600	1,652	2,100
2502	Insurance & Surety Bonds	40,935	40,238	47,290	54,055
2503	Dues/Fees	8,595	9,360	5,653	7,900
2504	Registration & Tuition	5,038	5,700	1,857	5,500
2505	Transportation & Travel	1,023	1,600	1,166	4,075
2506	Meeting Expense	506	750	749	900
2511	Volunteer Fund	10,500	10,500	-	10,500
2518	State Lab. Usage	4,124	4,000	1,310	4,000
2523	Telephone	19,027	12,225	4,182	14,625
2525	Radios & Pagers	4,102	7,200	8,053	9,000
2526	Electricity & Gas	46,615	43,620	33,079	51,900
2532	Miscellaneous	(8,194)	600	196	450
2533	Property Taxes On Leased Equipment	1,531	875	819	925
2539	Internet Access	5,221	5,650	4,749	7,345
2540	Fresno County Access (Computer)	1,894	1,900	1,089	2,000
2551	Life Scan Expense	1,805	2,000	1,254	2,000
3001	Small Tools	1,577	700	626	850
3002	Rent/Lease/Equipment	5,907	3,322	1,371	3,700
3011	Repair & Maintenance Vehicle	15,430	11,200	13,776	16,500
3012	Repair Equipment	4,554	5,750	5,107	26,450
3013	Repair Facilities	21,019	37,000	16,357	27,000

City of Firebaugh
Fiscal Year 2016 - 2017
General Fund Preliminary Budget

Fund Department
#004 General Fund Salaries and Expenses

<u>Expense Code</u>	<u>Description</u>	<u>Three Year Average</u>	<u>Adopted Budget FYE 2016</u>	<u>Actual FYE 2016 Thru</u>	<u>Proposed Budget FY 2016-2017</u>
3025	Storm Drain Repair	3,306	4,000	2,756	4,000
3501	Audit Fees	10,235	8,100	6,575	10,000
3502	Attorney Fee's	27,985	31,490	12,364	20,450
3503	City Elections	6,044	-	-	10,000
3504	Corbin/Willits Service Fee	1,534	1,122	893	2,050
3506	Engineering	17,355	4,500	9,223	9,500
3507	Inspection	26,216	8,000	7,280	11,500
3510	Animal Control	3,060	3,500	3,360	5,200
3512	Parking Violation Fees	2,513	1,500	1,130	1,800
3513	Other Professional Services	65,667	49,600	49,661	58,600
3515	Computer Service Agreement	16,346	7,394	4,619	6,900
3518	Pest Control	1,162	1,200	995	1,830
3519	Bank Charges	1,113	1,000	495	1,000
3525	Plan Check Fees	16,831	15,000	29,586	35,000
3542	Program Meals	595	500	281	450
5000	Capital Outlay	29,056	29,056	29,056	29,056
5002	Equipment Purchase	-	1,200	9,703	44,000
5005	Computer	3,510	-	-	2,800
5014	Ballistic Armor Vest	900	1,800	1,721	2,700
5035	Vehicle/Equipment Replacement	-	42,809	-	71,305
	Total Expenses	536,278	497,961	364,935	652,386
	Percentage Increase / (Decrease)	-4.34%		73.29%	23.67%
	Dollar Amount Increase / (Decrease)	(24,656)		133,026	154,425
	 Total Salaries & Expenses	 2,348,092	 2,384,363	 1,504,689	 2,370,491
	Percentage Increase / (Decrease)	-0.39%		63.11%	-0.59%
	Dollar Amount Increase / (Decrease)	(12,591)		879,674	(13,872)

City of Firebaugh
Fiscal Year 2016 - 2017
General Fund Preliminary Budget

Fund Department - Parks
#004 4080

<u>Expense Code</u>	<u>Description</u>	<u>Three Year Average</u>	<u>Adopted Budget FYE 2016</u>	<u>Actual FYE 2016 Thru 02/16</u>	<u>Proposed Budget FY 2016-2017</u>
1000	Salaries & Wages	15,591	13,881	8,933	17,519
1002	Wages / Mechanic, Janitor	-		-	1,645
1005	Overtime	649	200	81	200
1010	FICA	1,330	1,077	691	1,469
1011	Health Insurance	5,335	4,241	2,986	6,280
1013	PERS Retirement	3,184	2,137	1,375	3,234
1014	State Unemployment Insurance	1,776	-	653	-
1015	Workers Compensation	877	971	754	1,601
1016	Uniform Expense	23	-	-	-
1022	Unfunded Liability CalPERS	-	829	568	1,469
1023	Retirement Health Insurance	-	264	-	-
	Total Salaries	28,765	23,600	16,041	33,415
	Percentage Increase / (Decrease)	-9.21%		67.97%	29.37%
	Dollar Amount Increase / (Decrease)	(4,446)		7,559	9,815
2008	Janitorial Supplies	1,896	2,000	623	1,000
2011	Protective Clothing	6	100	102	125
2013	Gasoline, Oil & Lubricants	1,894	1,500	980	1,500
2014	Tires, Batteries & Accessories	649	1,000	631	1,000
2016	Safety Equipment	-		180	-
2017	Chemicals	1,578	1,700	1,129	1,700
2502	Insurance & Surety Bonds	5,475	531	511	3,255
2504	Registration & Tuition	-	200	-	-
2523	Telephone	61	100	5	50
2526	Electricity & Gas	17,540	18,000	16,013	25,000
2532	Miscellaneous	47	100	2	50
2533	Property Taxes On Leased Equipment	163	255	254	275
3001	Small Tools	529	500	626	700
3002	Rent/Lease/Equipment	480	1,300	55	1,300
3011	Repair & Maintenance Vehicle	736	1,000	891	1,200
3012	Repair Equipment	2,423	3,000	2,023	2,500
3013	Repair Facilities	13,939	12,000	12,389	12,000
3513	Other Professional Services	433	400	21	400
3518	Pest Control	26	100	114	180
5002	Equipment Purchase	-	1,200	-	20,000
5035	Vehicle/Equipment Replacement	-	5,385	-	5,385
	Total Expenses	50,690	50,371	36,550	77,620
	Percentage Increase / (Decrease)	-0.20%		72.56%	35.11%
	Dollar Amount Increase / (Decrease)	(1,405)		13,821	27,249
	Total Salaries & Expenses	79,455	73,971	52,591	111,036
	Percentage Increase / (Decrease)	-3.65%		71.10%	33.38%
	Dollar Amount Increase / (Decrease)	(5,851)		21,380	37,064.6

5002 - \$20,000 to purchase Chipper Truck

City of Firebaugh
Fiscal Year 2016 - 2017
General Fund Preliminary Budget

Fund Department - Sr. Center
#004 4095

<u>Expense Code</u>	<u>Description</u>	<u>Three Year Average</u>	<u>Adopted Budget FYE 2016</u>	<u>Actual FYE 2016 Thru 02/16</u>	<u>Proposed Budget FY 2016-2017</u>
1000	Salaries & Wages	12,019	10,240	6,407	9,663
1002	Wages / Mechanic, Janitor	3,022	3,561	1,902	3,641
1005	Overtime	44	50	78	50
1010	FICA	1,145	1,060	624	1,022
1011	Health Insurance	5,275	3,731	2,531	4,578
1013	PERS Retirement	3,862	2,501	1,484	2,504
1015	Workers Compensation	661	955	842	1,111
1022	Unfunded Liability CalPERS	-	824	565	1,028
1023	Retirement Health Insurance	-	253	-	-
	Total Salaries	26,030	23,175	14,434	23,597
	Percentage Increase / (Decrease)	-17.47%		62.28%	1.79%
	Dollar Amount Increase / (Decrease)	(6,466)		8,741	422
2001	Office Supplies	85	100	421	100
2006	Medical Supplies	7	50	21	50
2008	Janitorial Supplies	730	2,000	441	300
2009	Operational	742	500	491	800
2502	Insurance & Surety Bonds	559	522	571	1,046
2505	Transportation & Travel	66	100	-	75
2523	Telephone	1,733	-	427	775
2526	Electricity & Gas	4,111	3,800	2,303	3,600
2532	Miscellaneous	344	200	42	200
2539	Internet Access	265	-	398	600
3013	Repair Facilities	836	500	898	500
3502	Attorney Fee's	107	200	-	150
3518	Pest Control	416	600	317	500
3542	Program Meals	569	500	281	450
5035	Vehicle/Equipment Replacement	-	1,504	-	-
	Total Expenses	11,195	10,576	6,610	9,146
	Percentage Increase / (Decrease)	2.52%		62.50%	-15.64%
	Dollar Amount Increase / (Decrease)	215		3,966	(1,430)
	Total Salaries & Expenses	37,225	33,751	21,044	32,743
	Percentage Increase / (Decrease)	-13.65%		62.35%	-3.08%
	Dollar Amount Increase / (Decrease)	(6,251)		12,707	(1,008)

City of Firebaugh
Fiscal Year 2016 - 2017
General Fund Preliminary Budget

Fund Department - Elected Officials
#004 4099

<u>Expense Code</u>	<u>Description</u>	<u>Three Year Average</u>	<u>Adopted Budget FYE 2016</u>	<u>Actual FYE 2016 Thru 02/16</u>	<u>Proposed Budget FY 2016-2017</u>
2013	Gasoline, Oil & Lubricants	-	-	101	150
2504	Registration & Tuition	-	2,000	1,100	2,000
2505	Transportation & Travel	296	500	1,018	1,500
2506	Meeting Expense	63	-	64	100
2523	Telephone	-	-	-	2,600
3503	City Elections	6,044	-	-	10,000
	Total Expenses	6,413	2,500	2,283	16,350
	Percentage Increase / (Decrease)	-40.37%		91.30%	84.71%
	Dollar Amount Increase / (Decrease)	(3,223)		217	13,850
	 Total Salaries & Expenses	 6,245	 2,500	 2,283	 16,350
	Percentage Increase / (Decrease)	-37.75%		91.30%	84.71%
	Dollar Amount Increase / (Decrease)	(2,970)		217	13,850

City of Firebaugh
Fiscal Year 2016 - 2017
General Fund Preliminary Budget

Fund Department - Administration
#004 4100

<u>Expense Code</u>	<u>Description</u>	<u>Three Year Average</u>	<u>Adopted Budget FYE 2016</u>	<u>Actual FYE 2016 Thru 02/16</u>	<u>Proposed Budget FY 2016-2017</u>
1000	Salaries & Wages	57,571	48,213	28,288	50,180
1002	Wages / Mechanic, Janitor	4,159	3,561	2,256	3,641
1005	Overtime	257	100	48	100
1010	FICA	3,715	3,968	2,269	3,516
1011	Health Insurance	13,427	7,882	9,894	11,414
1013	PERS Retirement	12,556	8,775	4,769	8,652
1014	State Unemployment Insurance	(0)	-	28	-
1015	Workers Compensation	3,354	3,576	3,168	3,830
1022	Unfunded Liability CalPERS	-	3,048	2,089	3,546
1023	Retirement Health Insurance	-	955	-	-
	Total Salaries	95,923	80,078	52,809	84,880
	Percentage Increase / (Decrease)	-16.86%		65.95%	5.66%
	Dollar Amount Increase / (Decrease)	(19,849)		27,269	4,802
2001	Office Supplies	2,761	3,000	2,135	3,000
2005	Postage & Shipping	1,438	1,300	860	1,500
2008	Janitorial Supplies	1,187	1,200	582	1,000
2009	Operational	1,039	700	487	500
2501	Advertisement	805	500	577	1,000
2502	Insurance & Surety Bonds	4,102	1,955	2,147	3,419
2503	Dues/Fees	5,748	7,000	4,630	6,000
2504	Registration & Tuition	605	500	-	500
2505	Transportation & Travel	467	500	-	500
2506	Meeting Expense	270	250	570	300
2523	Telephone	4,100	3,000	989	1,500
2526	Electricity & Gas	2,990	3,000	1,885	3,000
2532	Miscellaneous	(9,046)	200	61	100
2533	Property Taxes On Leased Equipment	1,305	475	467	500
2539	Internet Access	1,561	1,200	942	1,400
3002	Rent/Lease/Equipment	3,003	373	1,154	2,000
3012	Repair Equipment	91	250	148	250
3013	Repair Facilities	2,894	-	-	500
3501	Audit Fees	10,235	8,100	6,575	10,000
3502	Attorney Fee's	20,029	22,790	10,556	15,000
3504	Corbin/Willits Service Fee	1,534	510	893	1,500
3506	Engineering	2,745	500	3,954	2,500
3513	Other Professional Services	8,323	3,000	5,937	8,000
3515	Computer Service Agreement	3,697	1,078	826	1,500
3518	Pest Control	526	500	419	650
3519	Bank Charges	1,096	1,000	404	1,000
5035	Vehicle/Equipment Replacement	-	1,504	-	1,504
	Total Expenses	75,497	64,385	47,198	68,623
	Percentage Increase / (Decrease)	-1.54%		73.31%	6.18%
	Dollar Amount Increase / (Decrease)	(11,664)		17,187	4,238
	Total Salaries & Expenses	171,356	144,463	100,007	153,502
	Percentage Increase / (Decrease)	-11.55%		69.23%	5.89%
	Dollar Amount Increase / (Decrease)	(31,513)		44,456	9,039

City of Firebaugh
Fiscal Year 2016 - 2017
General Fund Preliminary Budget

Fund Department - Police
#004 4130

<u>Expense Code</u>	<u>Description</u>	<u>Three Year Average</u>	<u>Adopted Budget FYE 2016</u>	<u>Actual FYE 2016 Thru 02/16</u>	<u>Proposed Budget FY 2016-2017</u>
1000	Salaries & Wages	667,774	679,173	396,394	632,841
1001	Dispatchers Wages	191,965	200,488	134,985	200,353
1002	Wages / Mechanic, Janitor	20,595	26,321	13,922	28,582
1004	Reserve Wages	28,463	17,525	14,942	5,750
1005	Overtime	21,604	28,500	28,586	30,000
1006	PD Overtime Special Events	6,065	-	6,034	6,000
1007	Dispatchers Overtime	3,544	2,700	1,065	2,000
1008	PD Double Time (DUI / Avoid 21 Program)	1,241	2,000	2,787	-
1009	PD Overtime DUI / Avoid 21 Program	13,464	21,000	9,969	-
1010	FICA	71,034	75,612	45,262	69,661
1011	Health Insurance	180,311	143,762	115,801	167,269
1013	PERS Retirement	296,741	288,143	94,134	159,859
1014	State Unemployment Insurance	610	-	805	1,000
1015	Workers Compensation	58,543	66,192	63,354	72,453
1016	Uniform Expense	9,358	10,680	8,413	7,080
1022	Unfunded Liability CalPERS	-	130,443	87,450	142,707
1023	Retirement Health Insurance	-	15,509	-	-
	Total Salaries	1,571,313	1,708,048	1,023,904	1,525,555
	Percentage Increase / (Decrease)	6.18%		59.95%	-12%
	Dollar Amount Increase / (Decrease)	94,507		684,145	-182,493.48
2001	Office Supplies	35	3,000	3,285	4,000
2004	Printing & Binding	1,171	1,000	456	1,000
2005	Postage & Shipping	1,261	1,200	740	1,200
2006	Medical Supplies	-	200	-	500
2008	Janitorial Supplies	35	900	213	400
2009	Operational	8,907	1,300	1,444	2,000
2010	Range Supplies	1,455	2,500	2,492	3,000
2013	Gasoline, Oil & Lubricants	43,892	40,000	17,094	30,000
2014	Tires, Batteries & Accessories	2,310	2,000	2,563	5,000
2501	Advertisement	555	500	-	500
2502	Insurance & Surety Bonds	28,165	36,185	42,928	42,812
2503	Dues/Fees	938	900	500	600
2504	Registration & Tuition	4,379	3,000	757	3,000
2505	Transportation & Travel	165	500	149	2,000
2506	Meeting Expense	173	500	114	500
2518	State Lab. Usage	3,903	4,000	1,310	4,000
2523	Telephone	7,043	7,000	1,099	7,000
2525	Radios & Pagers	1,667	5,000	5,389	6,000
2526	Electricity & Gas	14,452	14,000	7,928	12,500
2533	Property Taxes On Leased Equipment	27	60	42	65
2539	Internet Access	2,317	3,000	2,494	3,900
2540	Fresno County Access (Computer)	1,894	1,900	1,089	2,000
2551	Life Scan Expense	1,805	2,000	1,254	2,000
3002	Rent/Lease/Equipment	361	500	162	300
3011	Repair & Maintenance Vehicle	7,643	7,500	8,615	10,000
3012	Repair Equipment	395	2,000	2,348	13,000
3013	Repair Facilities	1,114	3,500	1,636	3,000
3502	Attorney Fee's	5,731	7,500	272	3,000
3504	Corbin/Willits Service Fee	-	510	-	550
3512	Parking Violation Fees	2,513	1,500	1,130	1,800
3513	Other Professional Services	3,520	4,000	6,597	5,000
3515	Computer Service Agreement	9,191	3,078	826	1,300
3519	Bank Charges	17	-	91	-

City of Firebaugh
Fiscal Year 2016 - 2017
General Fund Preliminary Budget

Fund Department - Police
#004 4130

<u>Expense Code</u>	<u>Description</u>	<u>Three Year Average</u>	<u>Adopted Budget FYE 2016</u>	<u>Actual FYE 2016 Thru 02/16</u>	<u>Proposed Budget FY 2016-2017</u>
5002	Equipment Purchase	-	-	9,703	24,000
5005	Computer	2,223	-	-	2,800
5014	Ballistic Armor Vest	900	1,800	1,721	2,700
5035	Vehicle/Equipment Replacement	-	-	-	30,000
	Total Expenses	160,537	162,533	126,441	231,427
	Percentage Increase / (Decrease)	16.82%		77.79%	29.77%
	Dollar Amount Increase / (Decrease)	19,658		36,092	68,894.45
	 Total Salaries & Expenses	 1,731,850	 1,870,581	 1,150,344	 1,756,982
	Percentage Increase / (Decrease)	6.83%		61.50%	-6.47%
	Dollar Amount Increase / (Decrease)	114,165		720,237	(113,599)

3012 - Purchase of cameras - grant funded by Fresno City Police Department \$10,000

5002 - Purchase vehicle grant funded by San Joaquin Valley Air Pollution Control District - \$24,000

City of Firebaugh
Fiscal Year 2016 - 2017
General Fund Preliminary Budget

Fund Department - Fire
#004 4140

<u>Expense Code</u>	<u>Description</u>	<u>Three Year Average</u>	<u>Adopted Budget FYE 2016</u>	<u>Actual FYE 2016 Thru 02/16</u>	<u>Proposed Budget FY 2016-2017</u>
1011	Health Insurance	5,204	5,500	3,452	4,174
	Total Salaries	38,145	5,500	3,452	4,174
	Percentage Increase / (Decrease)	-161.36%		62.76%	-31.77%
	Dollar Amount Increase / (Decrease)	(37,989)		2,048	(1,326)
2001	Office Supplies	1,115	500	985	1,000
2005	Postage & Shipping	27	150	76	120
2006	Medical Supplies	501	500	251	500
2011	Protective Clothing	1,399	1,000	-	1,000
2013	Gasoline, Oil & Lubricants	3,057	2,700	1,752	3,000
2014	Tires, Batteries & Accessories	1,526	1,500	647	1,500
2502	Insurance & Surety Bonds	441	-	-	465
2503	Dues/Fees	115	100	-	100
2511	Volunteer Fund	10,500	10,500	-	10,500
2523	Telephone	1,129	1,200	733	1,200
2525	• Radios & Pagers	2,436	2,200	2,663	3,000
2526	Electricity & Gas	3,832	3,700	1,987	3,100
2532	Miscellaneous	122	100	51	100
2533	Property Taxes On Leased Equipment	27	65	42	65
2539	Internet Access	221	250	54	100
3001	Small Tools	127	200	-	150
3002	Rent/Lease/Equipment	23	149	-	100
3011	Repair & Maintenance Vehicle	4,946	2,500	4,064	5,000
3012	Repair Equipment	(38)	-	-	10,000
3013	Repair Facilities	821	1,000	666	1,000
3504	Corbin/Willits Service Fee	-	102	-	-
3513	Other Professional Services	13,325	20,000	13,334	20,000
3515	Computer Service Agreement	2,352	1,078	1,316	1,500
5000	Capital Outlay	29,056	29,056	29,056	29,056
5035	Vehicle/Equipment Replacement	-	30,000	-	30,000
	Total Expenses	77,388	108,550	57,678	122,556
	Percentage Increase / (Decrease)	19.02%		53.13%	11.43%
	Dollar Amount Increase / (Decrease)	12,865		50,872	14,006
	Total Salaries & Expenses	115,534	114,050	61,130	126,730
	Percentage Increase / (Decrease)	-11.75%		53.60%	10.01%
	Dollar Amount Increase / (Decrease)	(25,124)		52,920	12,680

City of Firebaugh
Fiscal Year 2016 - 2017
General Fund Preliminary Budget

Fund Department - Code Enforcement
#004 4145

<u>Expense Code</u>	<u>Description</u>	<u>Three Year Average</u>	<u>Adopted Budget FYE 2016</u>	<u>Actual FYE 2016 Thru 02/16</u>	<u>Proposed Budget FY 2016-2017</u>
2503	Dues/Fees	475	480	240	500
	Total Expenses	475	480	240	500
	Percentage Increase / (Decrease)	2.93%		50.00%	4.00%
	Dollar Amount Increase / (Decrease)	14		240	20

City of Firebaugh
Fiscal Year 2016 - 2017
General Fund Preliminary Budget

Fund Department - Building and Inspections
#004 4180

<u>Expense Code</u>	<u>Description</u>	<u>Three Year Average</u>	<u>Adopted Budget FYE 2016</u>	<u>Actual FYE 2016 Thru 02/16</u>	<u>Proposed Budget FY 2016-2017</u>
1000	Salaries & Wages	9,378	12,800	7,628	12,079
1005	Overtime	170	50	102	100
1010	FICA	716	983	572	932
1011	Health Insurance	2,893	3,325	2,287	3,713
1013	PERS Retirement	2,465	2,441	1,422	2,356
1015	Workers Compensation	608	886	780	1,009
1022	Unfunded Liability CalPERS	-	764	524	934
1023	Retirement Health Insurance	-	227	-	-
	Total Salaries	16,231	21,476	13,313	21,121
	Percentage Increase / (Decrease)	74.66%		61.99%	-1.68%
	Dollar Amount Increase / (Decrease)	5,975		8,163	(355)
2001	Office Supplies	346	400	275	400
2009	Operational	348	1,000	20	500
2502	Insurance & Surety Bonds	895	484	528	515
2503	Dues/Fees	548	480	280	400
2523	Telephone	602	400	456	725
2526	Electricity & Gas	858	1,000	742	1,200
2539	Internet Access	600	600	430	675
3502	Attorney Fee's	308	-	240	300
3506	Engineering	5,456	2,000	26	1,000
3507	Inspection	26,216	8,000	7,280	11,500
3515	Computer Service Agreement	553	1,080	826	1,300
3525	Plan Check Fees	16,831	15,000	29,586	35,000
	Total Expenses	55,840	30,444	40,689	53,515
	Percentage Increase / (Decrease)	2.74%		133.65%	43.11%
	Dollar Amount Increase / (Decrease)	1,423		(10,245)	23,071
	Total Salaries & Expenses	72,071	51,920	54,002	74,636
	Percentage Increase / (Decrease)	12.27%		104.01%	30.44%
	Dollar Amount Increase / (Decrease)	7,398		(2,082)	22,716

City of Firebaugh
Fiscal Year 2016 - 2017
General Fund Preliminary Budget

Fund Department - Public Works
#004 4200

<u>Expense Code</u>	<u>Description</u>	<u>Three Year Average</u>	<u>Adopted Budget FYE 2016</u>	<u>Actual FYE 2016 Thru 02/16</u>	<u>Proposed Budget FY 2016-2017</u>
1000	Salaries & Wages	18,021	1,982	1,595	2,580
1005	Overtime	652	50	226	250
1010	FICA	1,238	155	89	197
1011	Health Insurance	6,117	266	183	297
1013	PERS Retirement	3,950	305	217	503
1014	State Unemployment Insurance	1,427	-	-	-
1015	Workers Compensation	1,134	140	113	215
1022	Unfunded Liability CalPERS	-	118	81	199
1023	Retirement Health Insurance	-	33	-	-
	Total Salaries	32,560	3,049	2,504	4,243
	Percentage Increase / (Decrease)	-69.54%		82.12%	28%
	Dollar Amount Increase / (Decrease)	(29,736)		545	1,194
2008	Janitorial Supplies	1,312	500	439	675
2009	Operational	2,160	-	585	-
2013	Gasoline, Oil & Lubricants	4,558	3,500	1,792	3,000
2014	Tires, Batteries & Accessories	1,080	800	444	700
2016	Safety Equipment	738	500	166	250
2502	Insurance & Surety Bonds	1,032	77	77	2,029
2503	Dues/Fees	771	400	4	300
2523	Telephone	4,050	150	18	50
2526	Electricity & Gas	2,832	120	2,219	3,500
2532	Miscellaneous	140	-	40	-
2533	Property Taxes On Leased Equipment	9	20	14	20
3011	Repair & Maintenance Vehicle	1,843	200	206	300
3012	Repair Equipment	1,683	500	587	700
3013	Repair Facilities	1,414	20,000	768	10,000
3025	Storm Drain Repair	3,306	4,000	2,756	4,000
3506	Engineering	4,234	-	105	-
3510	Animal Control	3,060	3,500	3,360	5,200
3513	Other Professional Services	12,798	200	706	200
3518	Pest Control	194	-	146	500
5035	Vehicle/Equipment Replacement	-	4,416	-	4,416
	Total Expenses	51,003	39,983	14,433	35,840
	Percentage Increase / (Decrease)	-55.49%		36.10%	-12%
	Dollar Amount Increase / (Decrease)	(37,423)		25,550	(4,143)
	Total Salaries & Expenses	83,563	43,032	16,937	40,083
	Percentage Increase / (Decrease)	-61.40%		39.36%	-7%
	Dollar Amount Increase / (Decrease)	(67,159)		26,095	(2,949)

City of Firebaugh
Fiscal Year 2016 - 2017
General Fund Preliminary Budget

Fund Department - Planning & Zoning
#004 4230

<u>Expense Code</u>	<u>Description</u>	<u>Three Year Average</u>	<u>Adopted Budget FYE 2016</u>	<u>Actual FYE 2016 Thru 02/16</u>	<u>Proposed Budget FY 2016-2017</u>
1000	Salaries & Wages	8,066	12,800	7,628	12,079
1005	Overtime	30	50	85	100
1010	FICA	611	983	572	932
1011	Health Insurance	2,394	3,325	2,286	3,713
1013	PERS Retirement	2,122	2,441	1,422	2,356
1015	Workers Compensation	558	886	780	1,009
1022	Unfunded Liability CalPERS	-	764	524	934
1023	Retirement Health Insurance	-	227	-	-
	Total Salaries	13,780	21,476	13,296	21,121
	Percentage Increase / (Decrease)	2407.33%		61.91%	-1.68%
	Dollar Amount Increase / (Decrease)	9,817		8,180	(355)
2501	Advertisement	355	600	1,075	600
2502	Insurance & Surety Bonds	265	484	528	515
2523	Telephone	309	375	456	725
2539	Internet Access	224	600	430	670
3502	Attorney Fee's	1,674	1,000	1,296	2,000
3506	Engineering	4,897	2,000	5,138	6,000
3513	Other Professional Services	26,787	22,000	23,066	25,000
3515	Computer Service Agreement	520	1,080	826	1,300
	Total Expenses	47,303	28,139	32,815	36,810
	Percentage Increase / (Decrease)	-8.39%		116.62%	23.56%
	Dollar Amount Increase / (Decrease)	(5,116)		(4,676)	8,671
	Total Salaries & Expenses	61,083	49,615	46,111	57,931
	Percentage Increase / (Decrease)	8.23%		92.94%	14.35%
	Dollar Amount Increase / (Decrease)	4,701		3,504	8,316

City of Firebaugh
Fiscal Year 2016 - 2017
General Fund Preliminary Budget

Fund Department - Public Safety .05% Sales Tax
006 4132

<u>Revenue Code</u>	<u>Description</u>	<u>Three Year Average</u>	<u>Adopted Budget FYE 2016</u>	<u>Actual FYE 2016 Thru 02/16</u>	<u>Proposed Budget FY 2016-2017</u>
3301	Interest Income	27	25	13	25
3530	Public Safety Funds	14,833	14,000	8,805	14,000
	Total Revenue	14,860	14,025	8,818	14,025
	Percentage Increase / (Decrease)	0.65%		62.87%	0.00%
	Dollar Amount Increase / (Decrease)	96		5,207	-

<u>Expense Code</u>	<u>Description</u>	<u>Three Year Average</u>	<u>Adopted Budget FYE 2016</u>	<u>Actual FYE 2016 Thru 02/16</u>	<u>Proposed Budget FY 2016-2017</u>
3012	Repair Equipment	13,123	-	3,445	-
5002	Equipment Purchase	4,834	-	-	14,000
5035	Vehicle/Equipment Replacement	-	14,000	13,942	-
	Total Expenses	18,206	14,000	17,387	14,000
	Percentage Increase / (Decrease)	76.87%		124.19%	0.00%
	Dollar Amount Increase / (Decrease)	(226)		(3,387)	-
	Total Net	(3,346)	25	(8,569)	25
	Percentage Increase / (Decrease)	-196.80%		-34276.20%	0.00%
	Dollar Amount Increase / (Decrease)	322		8,594	-

5002 - Purchase vehicle from San Joaquin Valley Air Pollution Control District - \$3,000

City of Firebaugh
Fiscal Year 2016 - 2017
General Fund Preliminary Budget

Fund Department - Law Enforcement (COPS)
008 4133

<u>Revenue Code</u>	<u>Description</u>	<u>Three Year Average</u>	<u>Adopted Budget FYE 2016</u>	<u>Actual FYE 2016 Thru 02/16</u>	<u>Proposed Budget FY 2016-2017</u>
3301	Interest Income	68	80	102	110
3849	County of Fresno AB 3229	102,133	106,230	74,618	106,230
	Total Revenue	102,201	106,310	74,720	106,340
	Percentage Increase / (Decrease)	3.01%		70.29%	0.03%
	Dollar Amount Increase / (Decrease)	3,079		31,590	30

<u>Expense Code</u>	<u>Description</u>	<u>Three Year Average</u>	<u>Adopted Budget FYE 2016</u>	<u>Actual FYE 2016 Thru 02/16</u>	<u>Proposed Budget FY 2016-2017</u>
1000	Salaries & Wages	45,728	45,046	29,285	48,966
1005	Overtime	1,582	1,714	1,712	2,000
1010	FICA	3,602	3,577	2,345	3,753
1011	Health Insurance	6,813	6,829	4,060	6,985
1013	PERS Retirement	15,519	11,784	2,826	6,626
1015	Workers Compensation	3,074	3,223	2,640	4,089
1016	Uniform Expense	966	-	-	-
1022	Unfunded Liability CalPERS	-	583	390	1,684
1023	Retirement Health Insurance	-	876	-	-
	Total Salaries	77,283	73,632	43,258	74,103
	Percentage Increase / (Decrease)	-25%		58.75%	0.64%
	Dollar Amount Increase / (Decrease)	(23,078)		30,374	471
2016	Safety Equipment	17,143	-	16,344	3,489
2502	Insurance & Surety Bonds	1,204	1,762	1,789	1,743
2507	Educational Training - Police Officers	-	-	164	-
2543	K-9 Supplies & Expense	6,290	7,915	3,838	5,000
3013	Repair Facilities	-	5,000	-	-
5002	Equipment Purchase	3,912	10,500	13,550	12,000
5005	Computer	-	7,500	3,801	-
5035	Vehicle/Equipment Replacement	-	-	-	10,000
	Total Expenses	18,012	32,677	39,486	32,232
	Percentage Increase / (Decrease)	2.23		120.84%	-1.38%
	Dollar Amount Increase / (Decrease)	16,686		(6,809)	(445)
	Total Salaries & Expenses	95,295	106,309	82,744	106,335
	Percentage Increase / (Decrease)	-5.38%		77.83%	0.02%
	Dollar Amount Increase / (Decrease)	(6,391)		23,565	26
	Total Net	6,906	1	(8,024)	5
	Percentage Increase / (Decrease)	-349.80%		-802401.00%	79.09%
	Dollar Amount Increase / (Decrease)	9,471		8,025	4

5002 - Purchase vehicle from San Joaquin Valley Air Pollution Control District - \$10,000

City of Firebaugh
Fiscal Year 2016 - 2017
General Fund Preliminary Budget

Fund Department - Assets Forfeit
019 4130

<u>Revenue Code</u>	<u>Description</u>	<u>Three Year Average</u>	<u>Adopted Budget FYE 2016</u>	<u>Actual FYE 2016 Thru 02/16</u>	<u>Proposed Budget FY 2016-2017</u>
3546	Miscellaneous Revenue	3,073	500	-	500
	Total Revenue	2,953	500	-	500
	Percentage Increase / (Decrease)	66.01%		0.00%	0.00%
	Dollar Amount Increase / (Decrease)	1,949		500	-

<u>Expense Code</u>	<u>Description</u>	<u>Three Year Average</u>	<u>Adopted Budget FYE 2016</u>	<u>Actual FYE 2016 Thru 02/16</u>	<u>Proposed Budget FY 2016-2017</u>
2543	K-9 Supplies & Expense	282			
2552	Refunds/Reimb.	7	-	-	-
3801	Farmer's Market Expenditures	1,197	-	-	-
	Total Expenses	1,485	-	-	-
	Percentage Increase / (Decrease)	(1)		0.00%	0.00%
	Dollar Amount Increase / (Decrease)	(1,187)		-	-
	Total Net	1,467	500	-	500
	Percentage Increase / (Decrease)	-626.98%		0.00%	0.00%
	Dollar Amount Increase / (Decrease)	3,136		500	-

City of Firebaugh
Fiscal Year 2016 - 2017
General Fund Preliminary Budget

Fund Department - Firebaugh Harvest Festival (Special Events)
061 4081

<u>Revenue Code</u>	<u>Description</u>	<u>Three Year Average</u>	<u>Adopted Budget FYE 2016</u>	<u>Actual FYE 2016 Thru 02/16</u>	<u>Proposed Budget FY 2016-2017</u>
3301	Interest Income	77	75	88	100
3546	Miscellaneous Revenue	214	-	42	-
3559	Carnival Presale of Tickets	63,780	70,000	73,620	75,000
3560	Carnival Games and Food Booths	600	1,950	-	-
3563	Beer Booth Revenue	12,684	13,000	20,244	21,000
3564	Pepsi Booth Revenue	1,241	-	-	-
3565	Food Booth Revenue	4,887	3,000	4,820	5,000
3566	Commercial Booth Revenue	4,101	4,200	6,235	6,400
3567	Community Donations	3,050	-	-	-
Total Revenue		90,633	92,225	105,049	107,500
Percentage Increase / (Decrease)		-3.67%		113.91%	14.21%
Dollar Amount Increase / (Decrease)		(3,322)		(12,824)	15,275

<u>Expense Code</u>	<u>Description</u>	<u>Three Year Average</u>	<u>Adopted Budget FYE 2016</u>	<u>Actual FYE 2016 Thru 02/16</u>	<u>Proposed Budget FY 2016-2017</u>
1000	Salaries & Wages	3,470	780	2,462	-
1001	Dispatchers Wages	-	-	-	505
1004	Reserve Wages	2,405	-	-	2,000
1005	Overtime	11,687	4,600	10,694	5,565
1006	PD Overtime Special Events	-	7,760	-	7,250
1010	FICA	1,018	1,005	932	1,133
Total Salaries		18,580	14,199	14,088	16,453
Percentage Increase / (Decrease)		32.49%		99.22%	13.70%
Dollar Amount Increase / (Decrease)		3,420		111	2,254

2501	Advertisement	994	1,200	1,010	1,200
2526	Electricity & Gas	994	1,000	827	1,300
2532	Miscellaneous	25	250	175	200
3013	Repair Facilities	28	-	150	-
3533	Program Cost	695	1,000	1,037	1,100
3549	Comm.Beer Booth	3,113	3,500	4,184	5,000
3550	Beer Purchase Expense	3,627	5,000	4,418	5,000
3554	Security Service	2,494	3,000	2,416	3,000
3555	Mid-Valley Disposal Services	3,800	4,000	3,900	4,000
3556	Setup And Cleanup Expense	4,520	5,000	3,444	5,000
3557	Entertainment	7,450	9,000	9,300	20,000
3558	Carnival Commission On-Site Ticket Sales	34,845	35,000	35,974	37,000
4019	Christmas Festival	3,768	5,000	2,349	8,000
Total Expenses		69,850	73,445	69,183	90,800
Percentage Increase / (Decrease)		-2.16%		94.20%	19.11%
Dollar Amount Increase / (Decrease)		(1,499)		4,262	17,355

Total Salaries & Expenses		88,430	87,644	83,272	107,253
Percentage Increase / (Decrease)		2.92%		95.01%	18.28%
Dollar Amount Increase / (Decrease)		1,921		4,372	19,609

Total Net		2,203	4,581	21,778	247
Percentage Increase / (Decrease)		-32.71%		475.39%	-1757.27%
Dollar Amount Increase / (Decrease)		(5,243)		(17,197)	(4,334)

City of Firebaugh
Fiscal Year 2016 - 2017
General Fund Preliminary Budget

Fund Department - Community Center
086 4100

<u>Revenue Code</u>	<u>Description</u>	<u>Three Year Average</u>	<u>Adopted Budget FYE 2016</u>	<u>Actual FYE 2016 Thru 02/16</u>	<u>Proposed Budget FY 2016-2017</u>
3568	Facilities Rental	41,996	50,000	16,744	27,000
	Total Revenue	41,996	50,000	16,744	27,000
	Percentage Increase / (Decrease)	-8.63%		33.49%	-85.19%
	Dollar Amount Increase / (Decrease)	(3,625)		33,256	(23,000)

<u>Expense Code</u>	<u>Description</u>	<u>Three Year Average</u>	<u>Adopted Budget FYE 2016</u>	<u>Actual FYE 2016 Thru 02/16</u>	<u>Proposed Budget FY 2016-2017</u>
1000	Salaries & Wages	7,019	15,985	6,675	2,153
1002	Wages / Mechanic, Janitor	4,334	5,341	3,384	5,461
1005	Overtime	32	32	17	-
1010	FICA	853	1,634	755	583
1011	Health Insurance	3,286	3,554	2,466	2,606
1013	PERS Retirement	2,879	2,525	1,721	1,238
1015	Workers Compensation	503	800	943	636
1022	Unfunded Liability CalPERS	-	-	654	522
	Total Salaries	18,906	29,871	16,615	13,199
	Percentage Increase / (Decrease)	91.53%		55.62%	-126.31%
	Dollar Amount Increase / (Decrease)	8,895		13,256	(16,672)
2001	Office Supplies	224	100	-	-
2008	Janitorial Supplies	2,581	3,000	1,392	2,135
2502	Insurance & Surety Bonds	1,380	805	639	622
2523	Telephone	870	350	282	450
2526	Electricity & Gas	3,691	4,500	2,991	4,700
2533	Property Taxes On Leased Equipment	41	50	42	70
2539	Internet Access	845	525	189	300
3013	Repair Facilities	4,333	6,000	4,759	4,000
3514	Service Agreements	1,124	1,500	-	-
3518	Pest Control	356	375	399	625
5035	Vehicle/Equipment Replacement	-	2,256	-	-
	Total Expenses	31,681	19,461	10,737	12,972
	Percentage Increase / (Decrease)	38.35%		55.17%	-50.02%
	Dollar Amount Increase / (Decrease)	5,216		8,724	(6,489)
	Total Salaries & Expenses	50,587	49,332	27,352	26,172
	Percentage Increase / (Decrease)	40.27%		55.45%	-88.49%
	Dollar Amount Increase / (Decrease)	14,111		21,980	(23,160)
	Total Net	(8,591)	668	(10,608)	828
	Percentage Increase / (Decrease)	-225.35%		-1588.06%	19.37%
	Dollar Amount Increase / (Decrease)	(17,736)		11,276	160